

# RNAV (RNP) Z RWY 3L

TRI-CITIES (PSC)

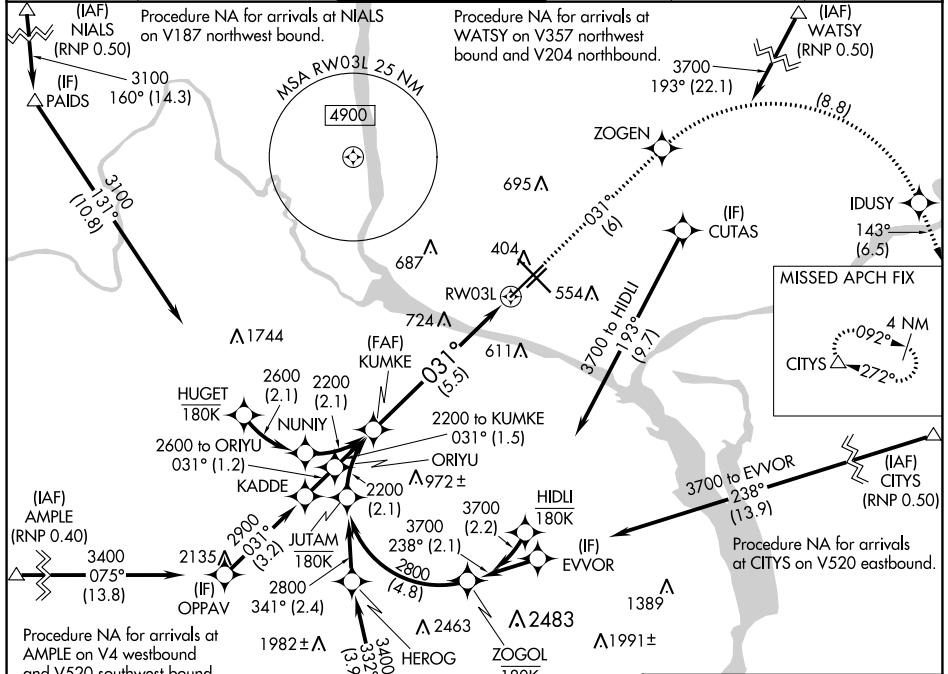
APP CRS <b>031°</b>	Rwy Idg <b>7707</b>
	TDZE <b>410</b>
	Apt Elev <b>410</b>

RNP AR APCH. RF required.

For uncompensated Baro-VNAV systems, procedure NA below -14°C or above 54°C.

MISSED APPROACH: Climb to 3200 on track 031° to ZOGEN, right turn to IDUSY, and on track 143° to CITYS and hold.

ATIS <b>125.65</b>	SPOKANE APP CON * <b>128.75 377.2</b>	TRI-CITIES TOWER * <b>135.3 (CTAF) 0 323.3</b>	GND CON <b>121.8</b>	CLNC DEL <b>120.0</b>	UNICOM <b>122.95</b>
-----------------------	--	---	-------------------------	--------------------------	-------------------------



NW-1, 31 OCT 2024 to 28 NOV 2024

NW-1, 31 OCT 2024 to 28 NOV 2024

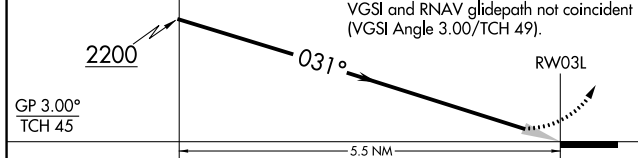
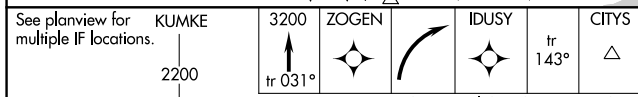
Procedure NA for arrivals at AMPLE on V4 westbound and V520 southwest bound.

Procedure NA for arrivals at CORDO on V4 eastbound.

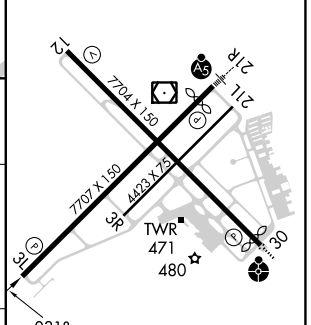
Procedure NA for arrivals at NIALS on V187 northwest bound.

Procedure NA for arrivals at WATSY on V357 northwest bound and V204 northbound.

Procedure NA for arrivals at CITYS on V520 eastbound.



ELEV 410	D	TDZE 410
----------	---	----------



CATEGORY	A	B	C	D
RNP 0.11 DA		729-1	319 (400-1)	
RNP 0.30 DA		849-1½	439 (500-1½)	

**AUTHORIZATION REQUIRED**

REIL Rwy 3L and 12  
MIRL Rwy 12-30  
HIRL Rwy 3L-21R