

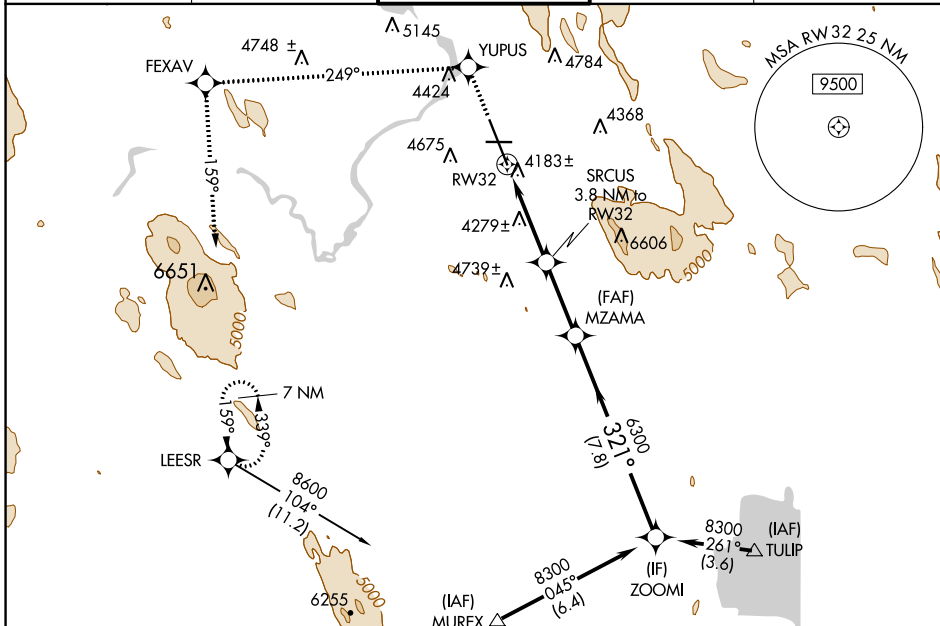
WAAS CH <b>70702</b> <b>W32A</b>	APP CRS <b>321°</b>	Rwy Idg <b>10302</b> TDZE <b>4095</b> Apt Elev <b>4095</b>
--	------------------------	--

# RNAV (GPS) RWY 32

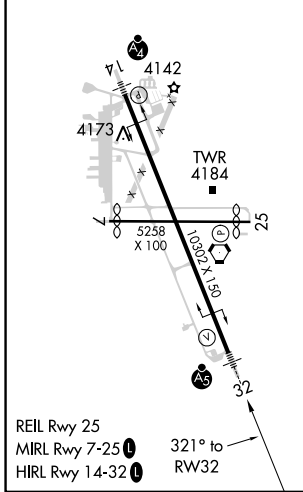
CRATER LAKE/KLAMATH RGNL (L.M.T)

RNP APCH.	MALSR	MISSED APPROACH: Climb to 8600 direct YUPUS and via track 249° to FEXAV and via track 159° to LEESR and hold.
<p>▼ For uncompensated Baro-VNAV systems, LNAV/VNAV NA below -23°C or above 41°C. For inop ALS, increase LPV all Cats visibility to RVR 5000. Circling NA for Cat D east of Rwy 14-32.</p>		

ATIS <b>126.5 263.0</b>	KINGSLEY APP CON <b>123.675 270.8</b>	KINGSLEY TOWER* <b>133.975 (CTAF) 0 257.8</b>	GND CON <b>121.9 348.6</b>	UNICOM <b>122.95</b>
----------------------------	--	--	-------------------------------	-------------------------



ELEV 4095	<b>D</b>	TDZE 4095
-----------	----------	-----------



Procedure NA for arrivals at MUREX via V25 southbound, and at TULIP via V452 southeast bound.

8600	YUPUS	ir 249°	FEXAV	ir 159°	LEESR	Procedure Turn NA
* LNAV only.						ZOOMI
RW32		* 1.8 NM to RW32	SRCUS 3.8 NM to RW32	MZAMA	8300	GP 3.00° TCH 55
1.8 NM		2 NM		2.8 NM		7.8 NM
CATEGORY	A	B	C	D		
LPV DA	4387/24 292 (300-½)					
LNAV/VNAV DA	4674-1½ 579 (600-½)					
LNAV MDA	4720/24	625 (700-½)	4720/60 625 (700-½)	4720-1½ 625 (700-½)		
<b>C</b> CIRCLING	4840-1 745 (800-1)	4980-1¼ 885 (900-1¼)	5420-3 1325 (1400-3)	5660-3 1565 (1600-3)		

NW-1, 08 AUG 2024 to 05 SEP 2024

NW-1, 08 AUG 2024 to 05 SEP 2024