

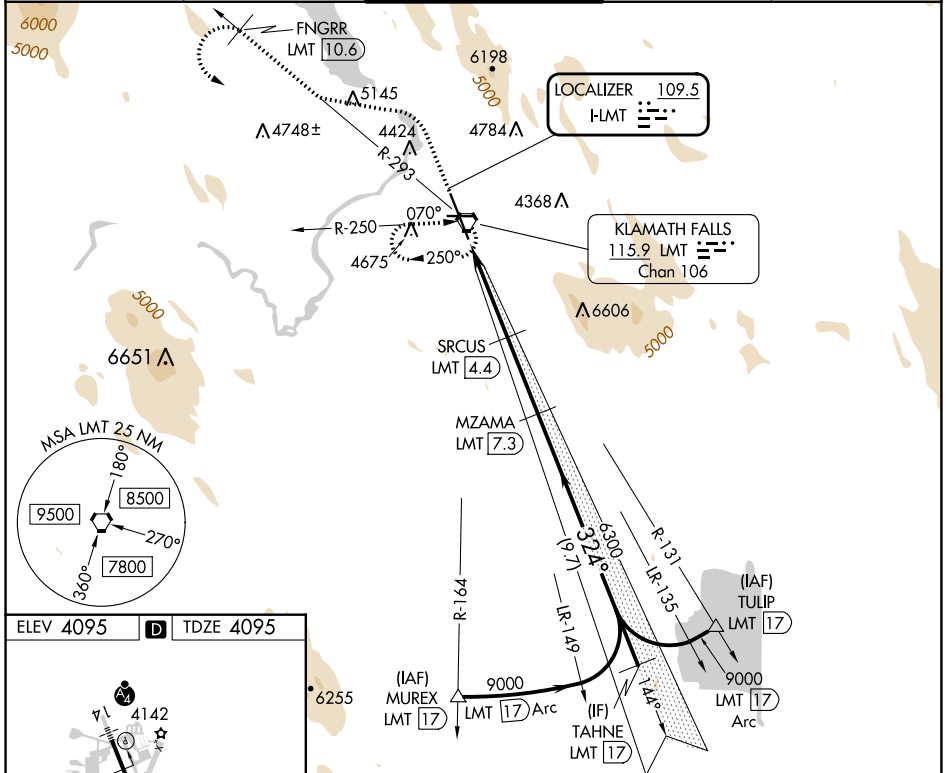
LOC I-LMT	APP CRS	Rwy Idg	<b>10302</b>
<b>109.5</b>	<b>324°</b>	TDZE	<b>4095</b>
		Apt Elev	<b>4095</b>

# ILS Y or LOC Y RWY 32

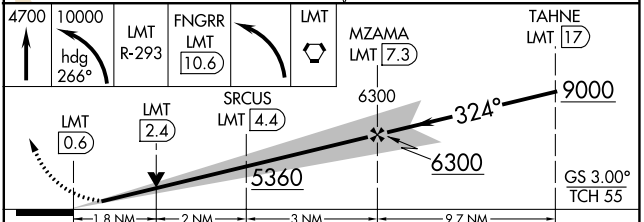
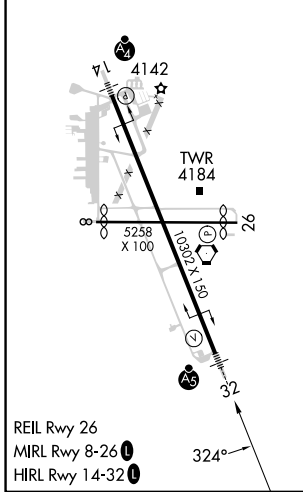
CRATER LAKE/KLAMATH RGNL (LMT)

DME required.	MALSR	MISSED APPROACH: Climb to 4700 then climbing left turn to 10000 on heading 266° and on LMT VORTAC R-293 to FNGRR/LMT 10.6 DME then left turn direct LMT VORTAC and hold, continue climb-in-hold to 10000.
<p><b>▼</b> Circling NA for Cat D northeast of Rwy 14-32. When local altimeter setting not received, procedure NA. DME from LMT VORTAC.</p> <p><b>▲</b> Simultaneous reception of I-LMT and LMT DME required. For inop ALS, increase LOC Cats C/D visibility to 1 3/4 SM.</p>		

ATIS	KINGSLEY APP CON*	KINGSLEY TOWER*	GND CON	UNICOM
<b>126.5 263.0</b>	<b>123.675 270.8</b>	<b>133.975 (CTAF) 257.8</b>	<b>121.9 348.6</b>	<b>122.95</b>



ELEV 4095	<b>D</b>	TDZE 4095
-----------	----------	-----------



CATEGORY	A	B	C	D
S-ILS 32	4315/24 220 (300-1/2)			
S-LOC 32	4720/24	625 (700-1/2)	4720-1 3/8	625 (700-1 1/8)
<b>C</b> CIRCLING	4840-1 745 (800-1)	4980-1 1/4 885 (900-1 1/4)	5420-3 1325 (1400-3)	5680-3 1585 (1600-3)

NW-1, 28 NOV 2024 to 26 DEC 2024

NW-1, 28 NOV 2024 to 26 DEC 2024