

KLAMATH FALLS, OREGON

HI-TACAN RWY 32

VORTAC LMT 115.9 Chan 106	APCH CRS 328°	Rwy ldg 10,302 TDZE 4095 Arprt Elev 4095
--	-------------------------	--

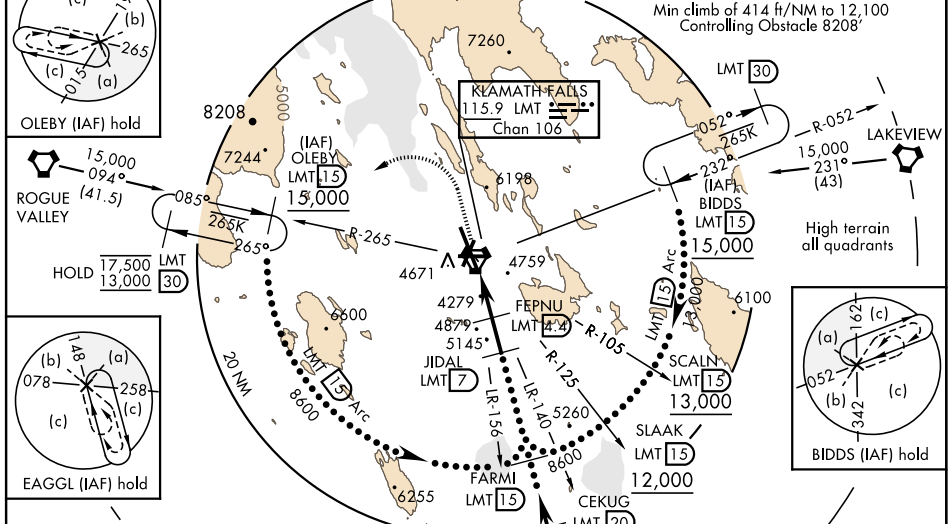
AL-473 [USAF]

CRATER LAKE-KLAMATH RGNL (KLMT)

DME required.	MALSR	MISSED APPROACH: Climb to 5500 then climbing left turn to 13,000 on heading 230° and LMT VORTAC R-265 to OLEBY/LMT 15 DME and hold. Continue climb in hold to 13,000.
---------------	-------	---

ATIS 126.5 263.0	KINGSLEY APP CON 123.675 270.8	KINGSLEY TOWER ★ 133.975 (CTAF) 257.8	GND CON 121.9 348.6	UNICOM 122.95
----------------------------	--	---	-------------------------------	-------------------------

<p>OLEBY (IAF) hold</p>	<p>** Circling NA for CAT D and E east of Rwy 14-32.</p>	Knots	60	120	180	240	300	360
		V/V(fpm)	414	828	1242	1656	2070	2484

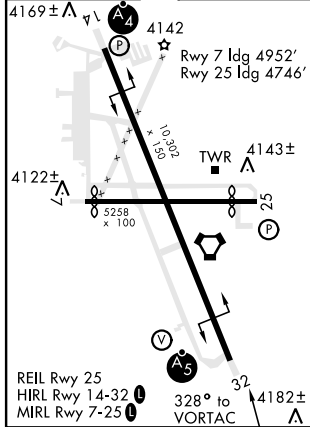


CAUTION: Missed Approach requires minimum climb rate of 414 FPNM to 12,100

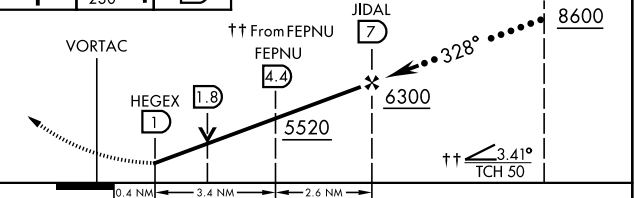
NOT FOR CIVIL USE

EMERG SAFE ALT 100 NM 16,400

ELEV 4095	D	TDZE 4095
-----------	---	-----------



5500	13,000	OLEBY LMT 15	VGSI and descent angles not coincident. (VGSI Angle 3.00/TCH 50).	Procedure turn NA
↑	hdg 230°			FARMI 15



CATEGORY	C	D	E
S-32*	4540/45	445	(500-7%)
CIRCLING**	5420-3 1325 (1400-3)	5660-3 1565 (1600-3)	5700-3 1605 (1700-3)

KLAMATH FALLS, OREGON

42° 09'N-121° 44'W

CRATER LAKE-KLAMATH RGNL (KLMT)

Amdt 5 25APR19

HI-TACAN RWY 32

NW-1, 08 AUG 2024 to 05 SEP 2024

NW-1, 08 AUG 2024 to 05 SEP 2024