

# HI-TACAN RWY 14

VORTAC LMT <b>115.9</b> Chan <b>106</b>	APCH CRS <b>134°</b>	Rwy Idg <b>10,302</b> TDZE <b>4091</b> Arprt Elev <b>4095</b>
---	-------------------------	---

AL-473 [USAF]

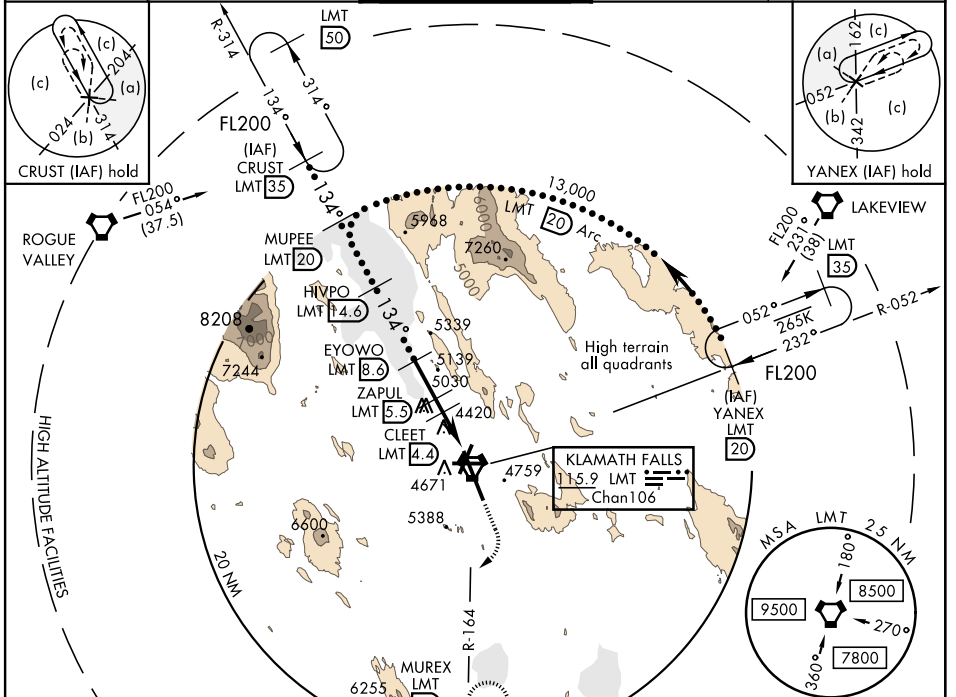
CRATER LAKE-KLAMATH RGNL (KLMT)

▼ \* When ALS inop increase all CATS vis to 2½  
 \*\* Circling NA for CATS D and E east of Rwy 14-32

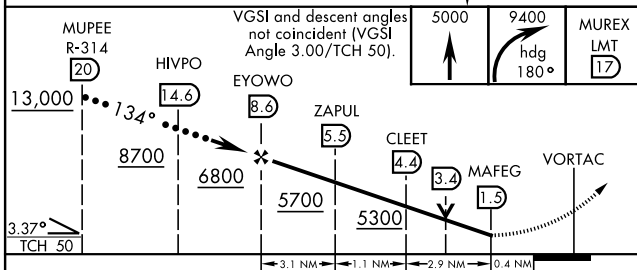


MISSED APPROACH: Climb to 5000 then climbing right turn to 9400 on heading 180° and LMT VORTAC R-164 to MUREX/LMT 17 DME and hold. Continue climb-in-hold to 9400.

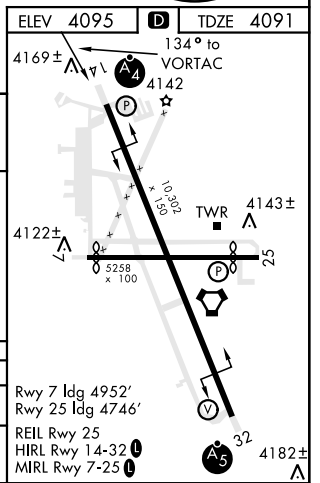
ATIS <b>126.5 263.0</b>	KINGSLEY APP CON <b>123.675 270.8</b>	KINGSLEY TOWER ★ <b>133.975 (CTAF) 257.8</b>	GND CON <b>121.9 348.6</b>	UNICOM <b>122.95</b>
----------------------------	--	---	-------------------------------	-------------------------



**NOT FOR CIVIL USE**  
 EMERG SAFE ALT 100 NM 16,400



CATEGORY	C		D		E
S-14*	4860-2 769 (800-2)				
☐ CIRCLING**	5420-3 1325 (1400-3)		5660-3 1565 (1600-3)		5700-3 1605 (1700-3)



# HI-TACAN RWY 14

NW-1, 08 AUG 2024 to 05 SEP 2024

NW-1, 08 AUG 2024 to 05 SEP 2024