

TACAN RWY 32L

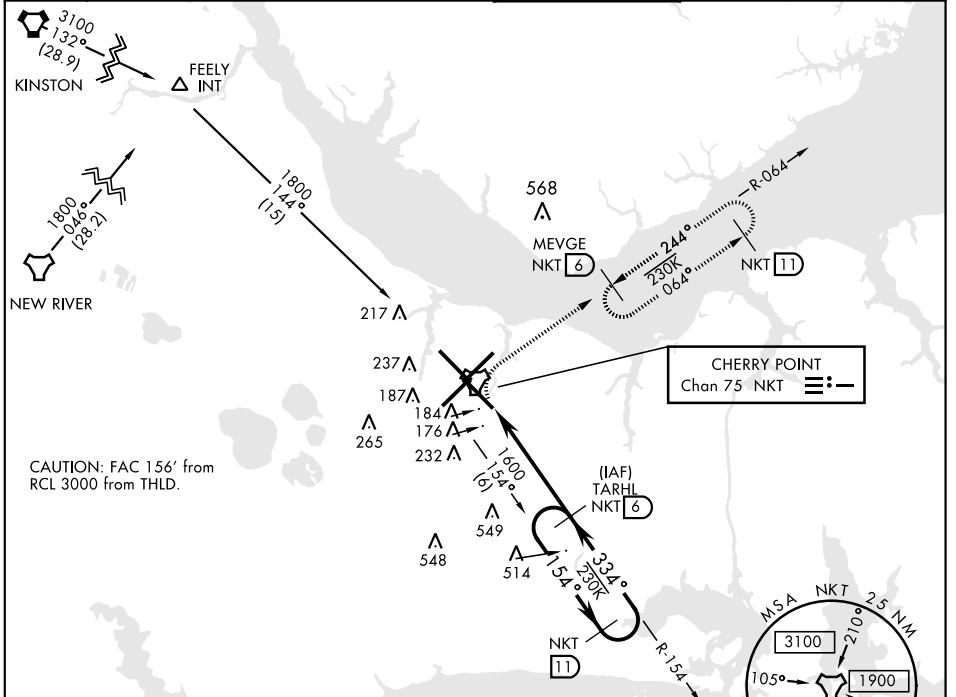
TACAN NKT Chan 75	APCH CRS 334°	Rwy ldg 7551 TDZE 26 Arprt Elev 29	AL-471 [USN]	CHERRY POINT MCAS (CUNNINGHAM FLD) (KNKT)
----------------------	------------------	---	--------------	---

▼ * When ALS inop, increase vis CAT AB to 1 mile, CAT CD to 1 3/8 miles.

ALSF-1 (A1)

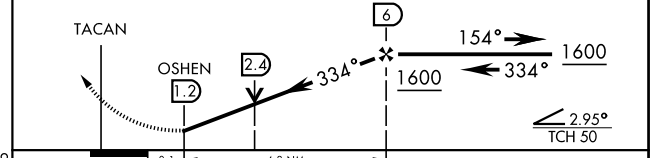
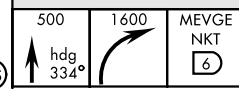
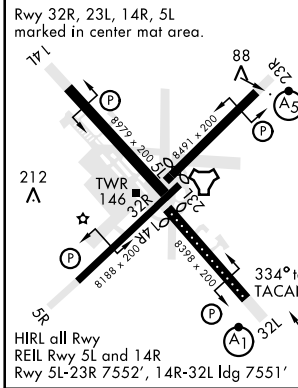
MISSED APPROACH: Climb on hdg 334°. At 500 climbing right turn to 1600 direct MEVGE and hold.

ATIS 127.475 244.875	CHERRY POINT APP CON (E) 119.75 360.775 (abv 2600') (E) 132.575 299.6 (at/blw 2600') (W) 119.35 377.175 (N) 124.1 268.7	CHERRY POINT TOWER 121.3 340.2	GND CON 128.625 239.025	CLNC DEL 125.95 316.125	ASR/PAR
----------------------------	--	-----------------------------------	-------------------------------	-------------------------------	---------



EMERG SAFE ALT 100 NM 4100

ELEV 29	TDZE 26
---------	---------



CATEGORY	A	B	C	D
S-32L *	480-1/2 454 (500-1/2)		480-7/8 454 (500-7/8)	
CIRCLING	580-1 551 (600-1)		600-1/2 571 (600-1/2)	600-2 571 (600-2)

CHERRY POINT, NORTH CAROLINA 34° 54' N - 76° 53' W CHERRY POINT MCAS (CUNNINGHAM FLD) (KNKT)

Amdt 5 10SEP20

TACAN RWY 32L

SE-2, 18 MAY 2023 to 15 JUN 2023

SE-2, 18 MAY 2023 to 15 JUN 2023