

CHERRY POINT, NORTH CAROLINA

RNAV (GPS) RWY 14L

WAAS Chan 41117 W14A	APCH CRS 144°	Rwy ldg TDZE Arprt Elev 8979 26 29
------------------------------------------	-------------------------	------------------------------------------------------------------------

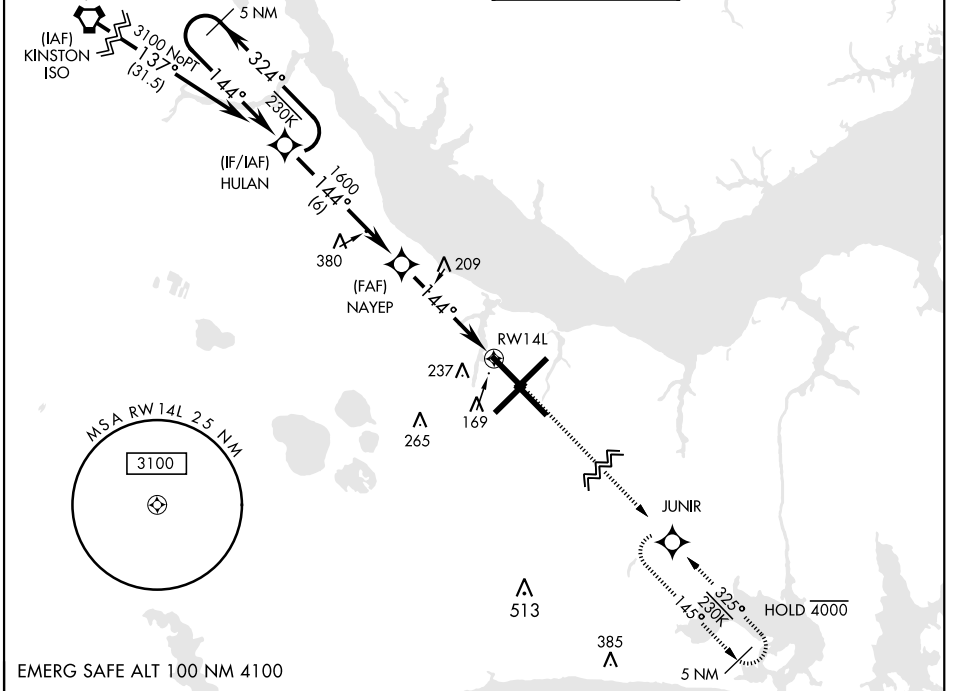
AL-471 [USN] CHERRY POINT MCAS (CUNNINGHAM FLD) (KNKT)

RNP APCH

▼ For uncompensated Baro-VNAV systems, LNAV/VNAV NA below -15°C (5°F) or above 54°C (129°F).

MISSED APPROACH: Climb to 3100 direct JUNIR and hold.

ATIS 127.475 244.875	APP CON 119.75 (E) 360.775 (abv 2600') 132.575 (E) 299.6 (at/blw 2600') 119.35 (W) 377.175 (N) 124.1 268.7	TOWER 121.3 340.2	GND CON 128.625 239.025	CLNC DEL 125.95 316.125	ASR/ PAR
------------------------------------------	-----------------------------------------------------------------------------------------------------------------------------------------------------------------------------	------------------------------------	---------------------------------------------	---------------------------------------------	-------------



SE-2, 18 MAY 2023 to 15 JUN 2023

SE-2, 18 MAY 2023 to 15 JUN 2023

VGSI and RNAV glidepath not coincident (VGSI Angle 3.00°/TCH 71').

5 NM Holding Pattern

HULAN
3100
324°
144°
144°
1600
NAYEP
1.3 NM to RW14L
RW14L
4.7 NM

CATEGORY	A	B	C	D
LPV DA	226- ³ / ₄		200 (200- ³ / ₄)	
LNAV/VNAV DA	302- ⁷ / ₈ 276 (300- ⁷ / ₈)	313- ⁷ / ₈ 287 (300- ⁷ / ₈)	321- ⁷ / ₈ 295 (300- ⁷ / ₈)	332- ⁷ / ₈ 306 (400- ⁷ / ₈)
LNAV MDA	500-1	474 (500-1)	500-1 ³ / ₈ 474 (500-1 ³ / ₈)	
CIRCLING	580-1	551 (600-1)	600-1 ¹ / ₂ 571 (600-1 ¹ / ₂)	600-2 571 (600-2)

ELEV 29 TDZE 26
3100 JUNIR
144° to RWY 14L
RWY 32R, 23L, 14R, 5L marked in center mat area.
TWR 146
32R
32L
32L
32L
32L

HIRL all rwys
REIL Rwy 5L, 14R
Rwy 5L-23R ldg 7552'
Rwy 14R-32L ldg 7551'

CHERRY POINT, NORTH CAROLINA

34° 54'N-76° 53'W

CHERRY POINT MCAS (CUNNINGHAM FLD) (KNKT)

Amdt 4 09SEP21

RNAV (GPS) RWY 14L