

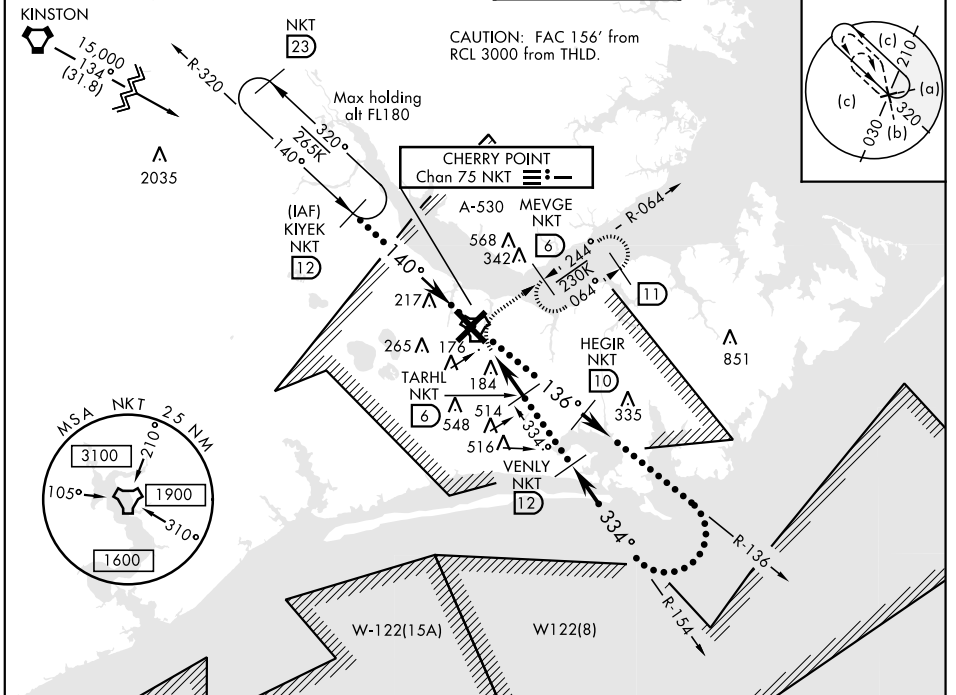
CERRY POINT, NORTH CAROLINA

HI-TACAN Z RWY 32L

TACAN NKT Chan 75	APCH CRS 334°	Rwy ldg TDZE Arprt Elev 7551 26 29	JAL-471 [USN]	CERRY POINT MCAS (CUNNINGHAM FLD) (KNKT)
-----------------------------	-------------------------	--	---------------	--

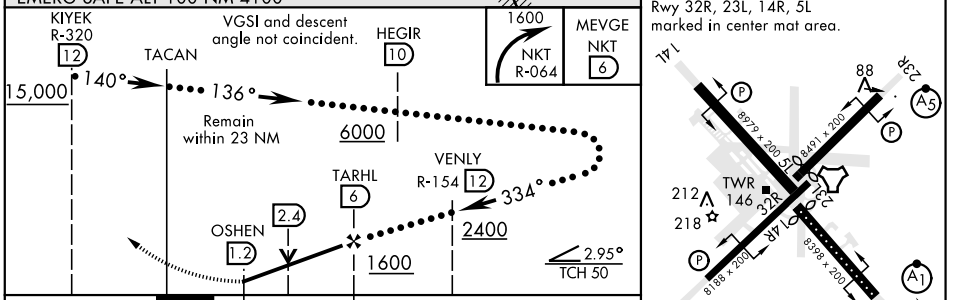
▼ * When ALS inop, increase vis to 1 3/8 miles.
ALS-1 (A1)
MISSED APPROACH: Climbing right turn to 1600 direct MEVGE and hold.

ATIS 127.475 244.875	CERRY POINT APP CON (E) 119.75 360.775 (abv 2600') (E) 132.575 299.6 (at/blw 2600') (W) 119.35 377.175 (N) 124.1 268.7	CERRY POINT TOWER 121.3 340.2	GND CON 128.625 239.025	CLNC DEL 125.95 316.125	ASR/ PAR
--	---	--	---	---	-------------



EMERG SAFE ALT 100 NM 4100

ELEV 29	TDZE 26
---------	---------



CATEGORY	C	D	E
S-32L *	480-7/8	454 (500-7/8)	
CIRCLING	600-1 1/2 571 (600-1 1/2)	600-2 571 (600-2)	700-2 1/2 671 (700-2 1/2)

HIRL all Rwy
 REIL Rwy 5L and 14R
 Rwy 5L-23R ldg 7552',
 14R-32L ldg 7551'

CERRY POINT, NORTH CAROLINA 34° 54' N-76° 53' W CERRY POINT MCAS (CUNNINGHAM FLD) (KNKT)

HI-TACAN Z RWY 32L

SE-2, 18 MAY 2023 to 15 JUN 2023

SE-2, 18 MAY 2023 to 15 JUN 2023