

CHERRY POINT, NORTH CAROLINA

HI-TACAN Y RWY 32L

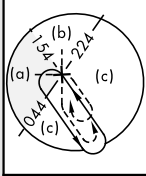
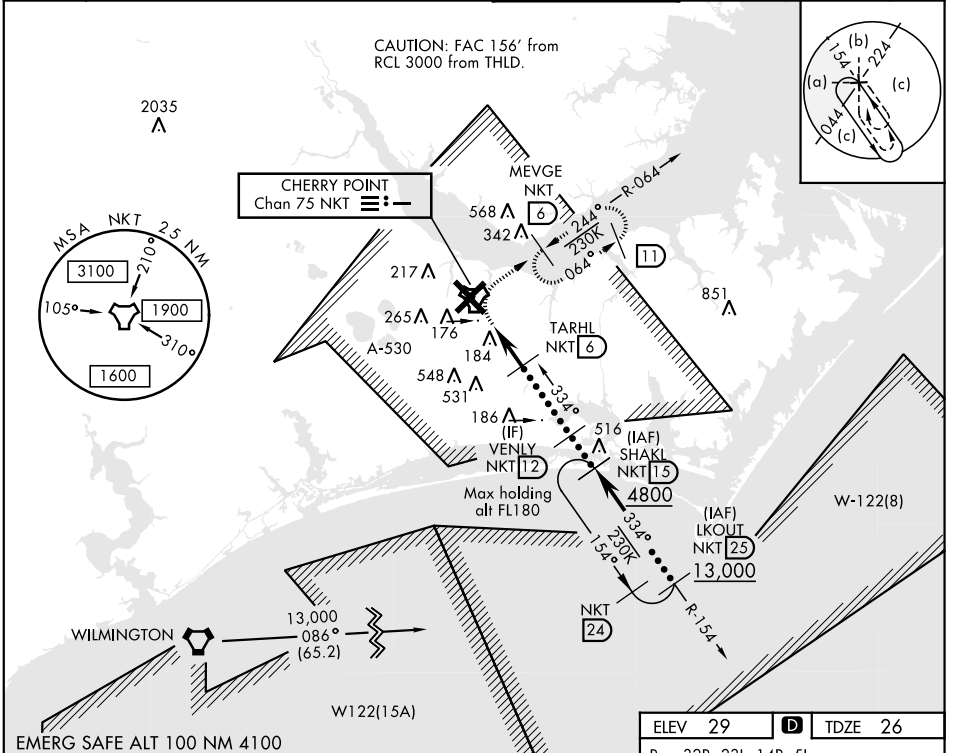
TACAN NKT Chan 75	APCH CRS 334°	Rwy ldg TDZE Arpt Elev 7551 26 29	JAL-471 [USN]	CHERRY POINT MCAS (CUNNINGHAM FLD) (KNKT)
-----------------------------	-------------------------	---	---------------	---

▼ * When ALS inop, increase vis to 1 3/8 miles.

ALSF-1

MISSED APPROACH: Climbing right turn to 1600 direct MEVGE and hold.

ATIS 127.475 244.875	CHERRY POINT APP CON (E) 119.75 360.775 (abv 2600') (E) 132.575 299.6 (at/blw 2600') (W) 119.35 377.175 (N) 124.1 268.7	CHERRY POINT TOWER 121.3 340.2	GND CON 128.625 239.025	CLNC DEL 125.95 316.125	ASR/ PAR
--	--	---	---	---	-------------

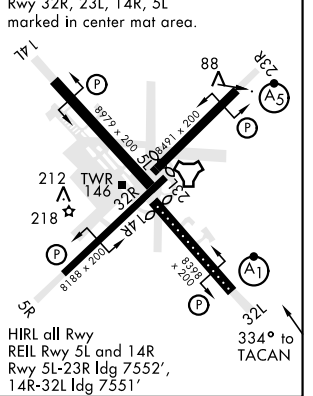
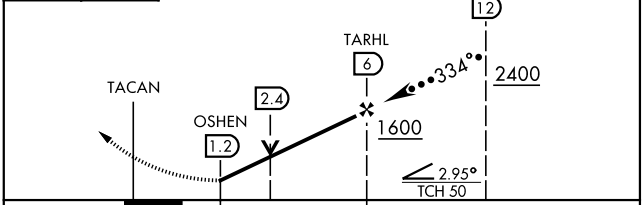


1600 MEVGE NKT 6 VGSI and descent angle not coincident.

NKT R-064

ELEV 29 TDZE 26

Rwy 32R, 23L, 14R, 5L marked in center mat area.



CATEGORY	C	D	E
S-32L*	480-7/8	454 (500-7/8)	
CIRCLING	600-1 1/2 571 (600-1 1/2)	600-2 571 (600-2)	700-2 1/2 671 (700-2 1/2)

CHERRY POINT, NORTH CAROLINA 34° 54' N-76° 53' W CHERRY POINT MCAS (CUNNINGHAM FLD) (KNKT)

HI-TACAN Y RWY 32L

Amdt 4 10SEP20

SE-2, 18 MAY 2023 to 15 JUN 2023

SE-2, 18 MAY 2023 to 15 JUN 2023