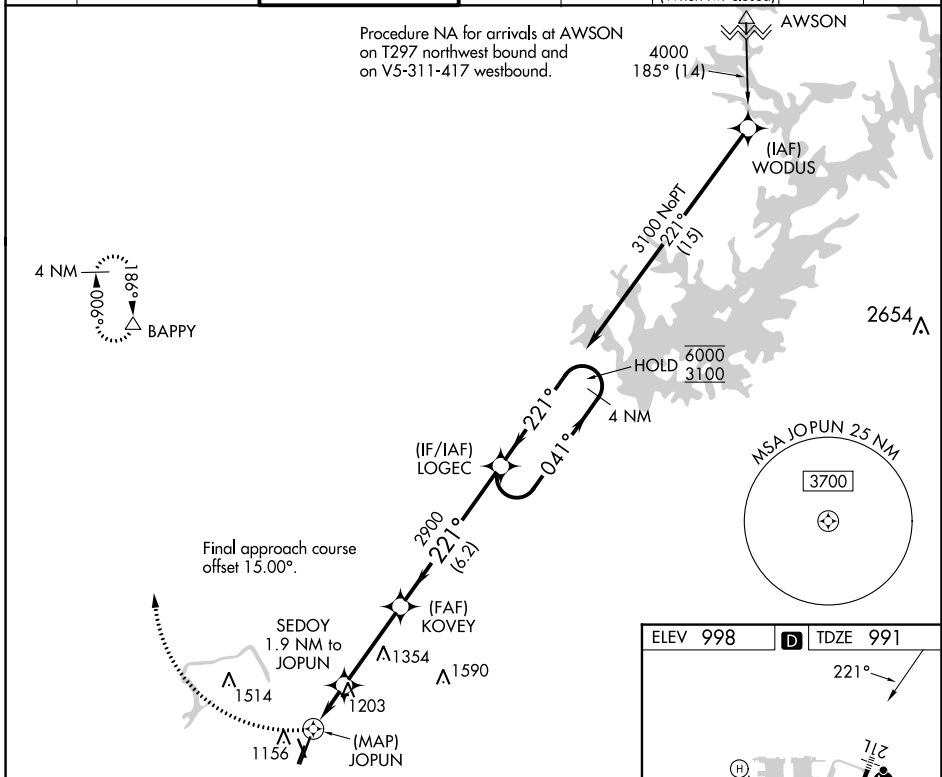


| | |
|------------------------|------------------------|
| APP CRS 221° | Rwy Idg 4996 |
| | TDZE 991 |
| | Apt Elev 998 |

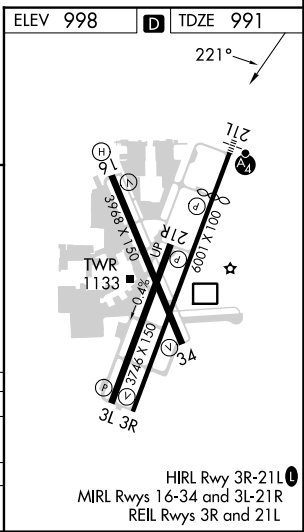
RNAV (GPS) Y RWY 21L

DEKALB-PEACHTREE (PDK)

| | | | | | | | |
|--|---|--|-------------------------|--------------------------|---|---|--------------|
| RNP APCH. | | | | MALSF | | MISSED APPROACH: Climbing right turn to 4000 direct BAPPY and hold. | |
| <p>⚠ Circling Rwy 16, 34 NA at night. Rwy 21L helicopter visibility reduction below 3/4 SM NA. For uncompensated Baro-VNAV systems, procedure NA below -8°C or above 54°C. For inop ALS, increase LNAV/VNAV all Cats visibility to 1 1/2 SM and LNAV Cat A/B visibility to RVR 5500.</p> | | | | | | | |
| ATIS 128.4 | ATLANTA APP CON 126,975 239,275 | PEACHTREE TOWER* 120.9(CTAF) 281.5 | GND CON 121.6 | CLNC DEL 125.2 | CLNC DEL 120.9 (When twr closed) | UNICOM 122.95 | 120.0 |



| | | | | | | |
|--------------------|--------|---------------------------|---------------|---------------|-------------------------|----------------------|
| 4000 | BAPPY | SEDJOY 1.9 NM to JOPUN | | KOVEY 2900 | LOGEC | 4 NM Holding Pattern |
| *LNAV only. | | *0.8 NM to JOPUN | | | | |
| JOPUN | | 1800* | 2900 | 041° → 6000 | ← 221° | 6000 3100 |
| GP 3.00° TCH 56 | | | | | | |
| 0.5 0.8 NM | | 1.1 NM | 3.5 NM | 6.2 NM | | |
| CATEGORY | A | | B | C | D | |
| LNAV/VNAV | DA | 1449/55 | | 458 (500-1) | | |
| LNAV | MDA | 1460/40 | 469 (500-3/4) | 1460/60 | 469 (500-1 1/4) | |
| CIRCLING | 1500-1 | | 502 (600-1) | 1840-2 1/2 | 2060-3 1062 (1100-3) | |



SE-4, 11 JUL 2024 to 08 AUG 2024

SE-4, 11 JUL 2024 to 08 AUG 2024