

EC-1, 11 JUL 2024 to 08 AUG 2024

DEPARTURE ROUTE DESCRIPTION

TAKEOFF RUNWAY 5: Climb on heading 053° to 1220, then on heading 300° or as assigned by ATC, for RADAR vectors to JWELS, thence....

TAKEOFF RUNWAY 9: Climb on heading 095° to 1220, then on heading 300° or as assigned by ATC, for RADAR vectors to JWELS, thence....

TAKEOFF RUNWAY 23: Climb on heading 233° or as assigned by ATC, for RADAR vectors to JWELS, thence....

TAKEOFF RUNWAY 27: Climb on heading 275° or as assigned by ATC, for RADAR vectors to JWELS, thence....

....on track 218° to SNDRS, then on (transition). Maintain ATC assigned altitude, expect filed altitude 10 minutes after departure.

BGHRT TRANSITION (SNDRS3.BGHRT):
TORRR TRANSITION (SNDRS3.TORRR):

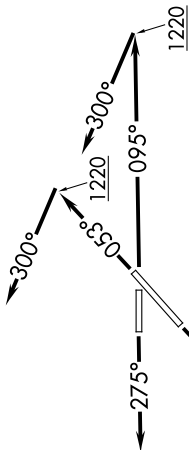
NOTE: Turbojet departures at/ above 10000, maintain 280K until advised by ATC.

NOTE: TORRR Transition: For use by KIND and KCVG area arrivals only and flights filed at or below FL220, or as assigned by ATC.

TOP ALTITUDE: ASSIGNED BY ATC

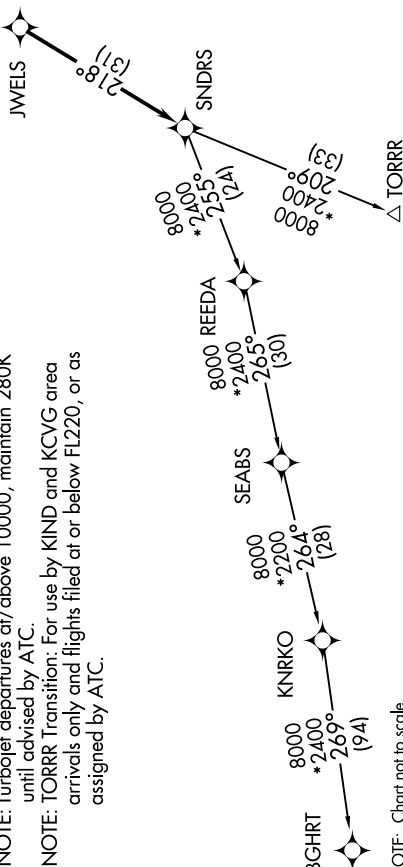
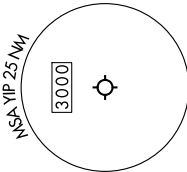
RNAV-1 DME/DME/IRU or GPS.
 RADAR required.

DETROIT DEP CON 118.95 284.0
 ATIS 127.425
 GND CON 119.975
 WILLOW RUN TOWER 125.275 256.9



TAKEOFF MINIMUMS:

Rwy 23: Standard.
 Rwy 5, 9: Standard with minimum climb of 500' per NM to 1220.
 Rwy 27: Standard with minimum climb of 209' per NM to 1000.



NOTE: Chart not to scale.

EC-1, 11 JUL 2024 to 08 AUG 2024