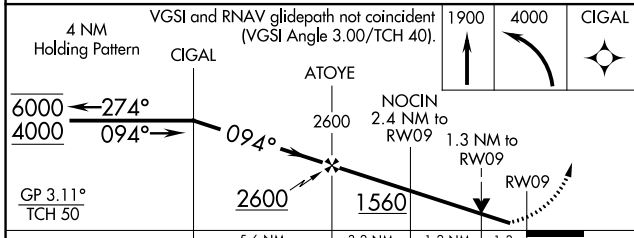
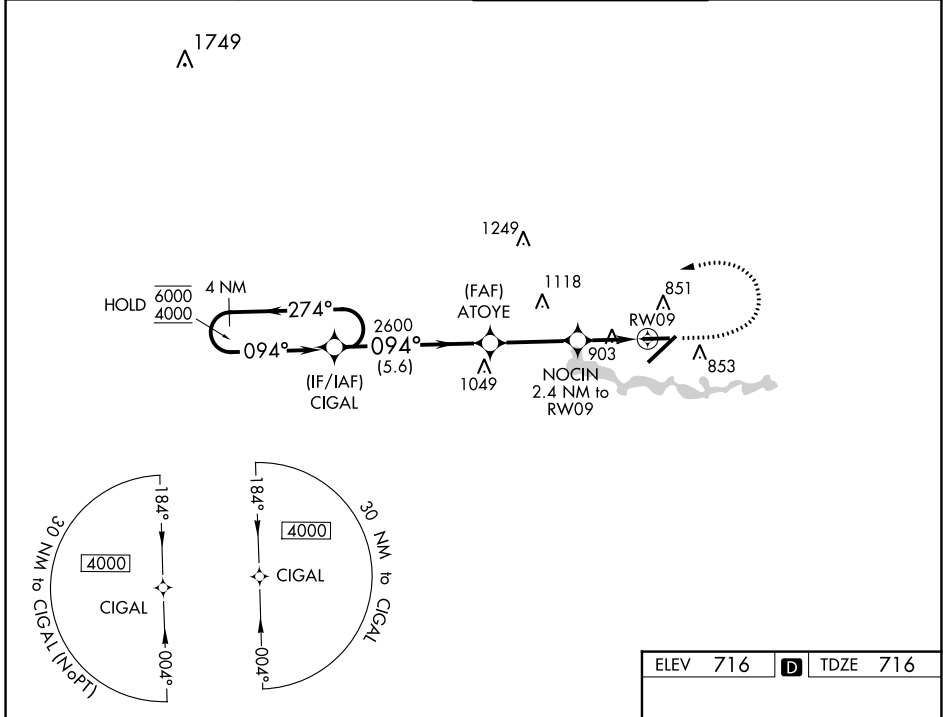


WAAS CH <b>73035</b> <b>W09A</b>	APP CRS <b>094°</b>	Rwy Idg TDZE Apt Elev	<b>5001</b> <b>716</b> <b>716</b>
--	------------------------	-----------------------------	---

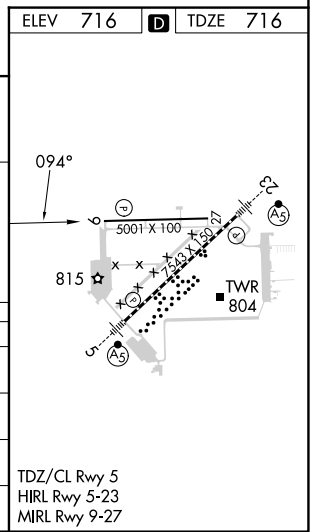
# RNAV (GPS) RWY 9

WILLOW RUN (YIP)

RNP APCH - GPS.		MISSED APPROACH: Climb to 1900 then climbing left turn to 4000 direct CIGAL and hold, continue climb-in-hold to 4000.	
<p><b>⚠</b> Rwy 9 helicopter visibility reduction below <math>\frac{3}{4}</math> SM NA. For uncompensated Baro-VNAV systems, LNAV/VNAV NA below <math>-21^{\circ}\text{C}</math> or above <math>54^{\circ}\text{C}</math>.</p>		ATIS <b>127.425</b>	DETROIT APP CON <b>118.95 284.0</b>
		WILLOW RUN TOWER <b>125.275 256.9</b>	GND CON <b>119.975</b>



CATEGORY	A	B	C	D
LPV DA	966- $\frac{3}{4}$		250 (300- $\frac{3}{4}$ )	
LNAV/VNAV DA	1201-1 $\frac{3}{8}$		485 (500-1 $\frac{3}{8}$ )	
LNAV MDA	1160-1	444 (500-1)	1160-1 $\frac{3}{8}$	444 (500-1 $\frac{3}{8}$ )
<b>C</b> CIRCLING	1220-1	504 (600-1)	1220-1 $\frac{1}{2}$ 504 (600-1 $\frac{1}{2}$ )	1400-2 $\frac{1}{4}$ 684 (700-2 $\frac{1}{4}$ )



EC-1, 11 JUL 2024 to 08 AUG 2024

EC-1, 11 JUL 2024 to 08 AUG 2024