

TOP ALTITUDE:
3000

EC-1, 08 AUG 2024 to 05 SEP 2024

TAKEOFF MINIMUMS

Rwys 5L/R, 9, 23L/R: Standard.

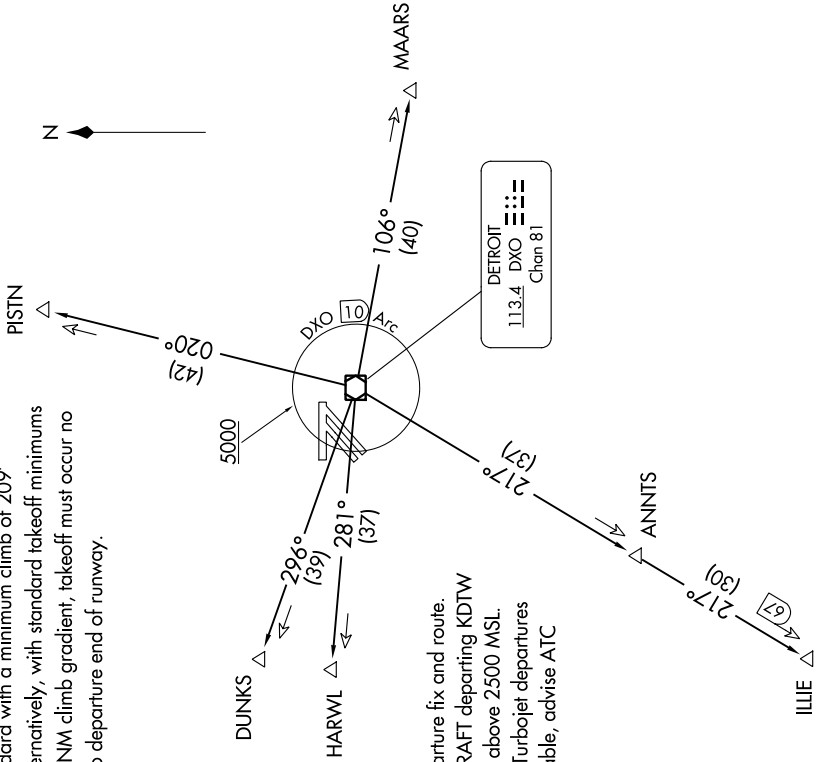
Rwy 27: 300-1½ or standard with a minimum climb of 209' per NM to 1000, or alternatively, with standard takeoff minimums and a normal 200' per NM climb gradient, takeoff must occur no later than 1300' prior to departure end of runway.

ATIS 127.425
GND CON
119.975
WILLOW RUN TOWER
125.275 256.9
DETROIT DEP CON
118.95 284.0

- NOTE: RADAR required.
- NOTE: DME required.
- NOTE: For use by non-RNAV equipped aircraft only.

SPECIAL INSTRUCTIONS:

When using this departure, file the appropriate depicted departure fix and route. Aircraft over HARWL must file FL220 and below. PROP AIRCRAFT departing KDTW Rwy 21L/R and 22L/R westbound, cross DXO 3.5 DME at or above 2500 MSL. Aircraft landing Cleveland (CLE) must file MAARS transition. Turbojet departures at/above 10000, maintain 280K until advised by ATC. If unable, advise ATC prior to departure.



(NARRATIVE ON FOLLOWING PAGE)

NOTE: Chart not to scale.

EC-1, 08 AUG 2024 to 05 SEP 2024