

LOC/DME I-YIP <b>109.5</b> Chan <b>32</b>	APP CRS <b>053°</b>	Rwy Idg TDZE Apt Elev	<b>7543</b> <b>716</b> <b>716</b>
---	------------------------	-----------------------------	---

# ILS or LOC RWY 5

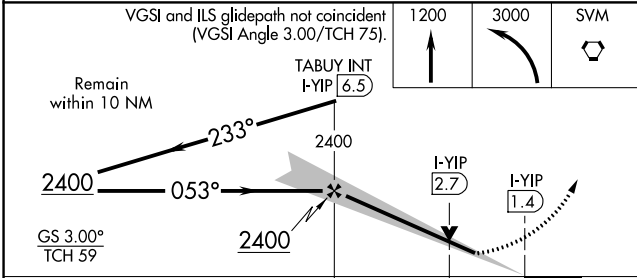
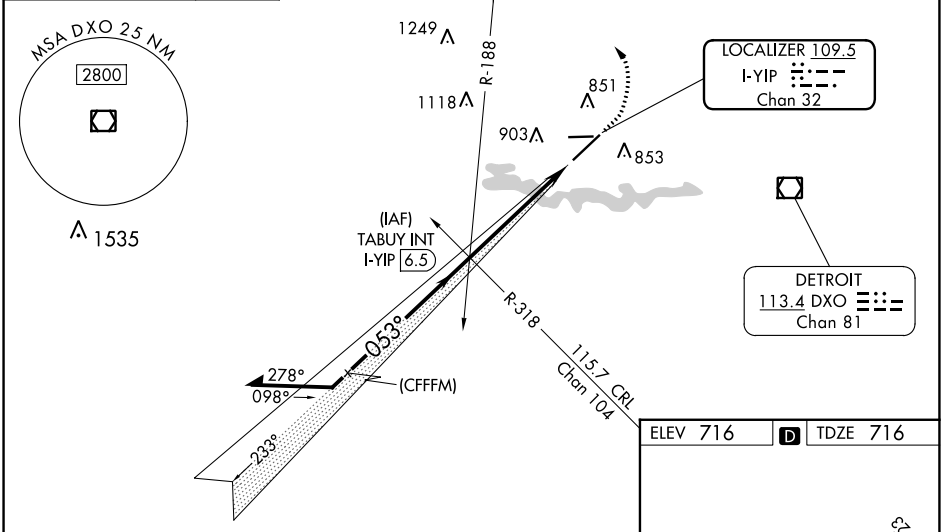
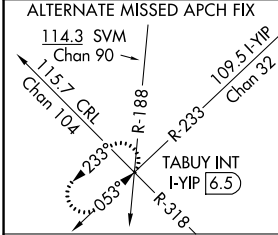
WILLOW RUN (YIP)

**▽** For inop ALS, increase S-LOC 5  
**▲** Cats C/D visibility to 1½ SM.

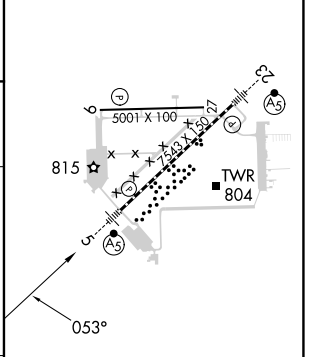


MISSED APPROACH: Climb to 1200 then climbing left turn to 3000 direct SVM VORTAC and hold.

ATIS <b>127.425</b>	DETROIT APP CON <b>118.95 284.0</b>	WILLOW RUN TOWER <b>125.275 256.9</b>	GND CON <b>119.975</b>
------------------------	--	--	---------------------------



ELEV 716 **D** TDZE 716



CATEGORY	A	B	C	D
S-ILS 5	916/18 200 (200-½)			
S-LOC 5	1200/24	484 (500-½)	1200/50	484 (500-1)
<b>C</b> CIRCLING	1220-1	504 (600-1)	1220-1½	1400-2¼
			504 (600-1½)	684 (700-2¼)

TDZ/CL Rwy 5  
HIRL Rwy 5-23  
MIRL Rwy 9-27

FAF to MAP 5.1 NM

Knots	60	90	120	150	180
Min:Sec	5:06	3:24	2:33	2:02	1:42

EC-1, 11 JUL 2024 to 08 AUG 2024

EC-1, 11 JUL 2024 to 08 AUG 2024