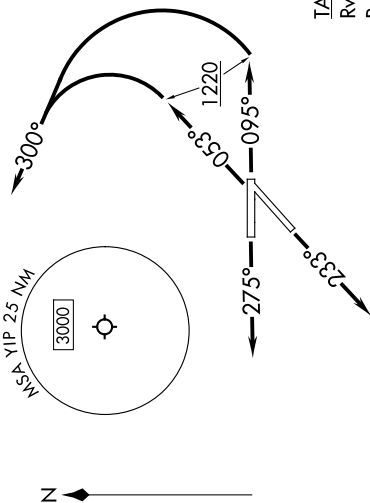


EC-1, 11 JUL 2024 to 08 AUG 2024

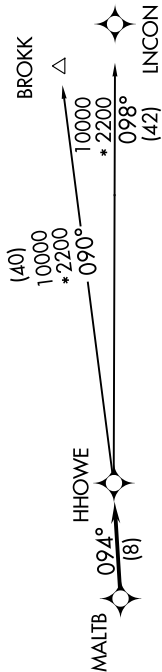
**TOP ALTITUDE:  
ASSIGNED BY ATC**



RNAV-1 DME/DME/IRU or GPS.  
RADAR required.

DETROIT DEP CON  
118.95 284.0  
ATIS  
127.425  
GND CON  
119.975  
WILLOW RUN TOWER  
125.275 256.9

NOTE: Turbojet departures at/above 10000, maintain 280K until advised by ATC.  
NOTE: BROKK TRANSITION: For use by flights filed at or below FL270, or as assigned by ATC.



**TAKEOFF MINIMUMS:**

Rwys 5, 9: Standard with minimum climb of 500' per NM to 1220.  
Rwy 23: Standard.  
Rwy 27: Standard with minimum climb of 209' per NM to 1000.

NOTE: Chart not to scale.

**DEPARTURE ROUTE DESCRIPTION**

TAKEOFF RUNWAY 5: Climb on heading 053° to 1220, then on heading 300° or as assigned by ATC, for RADAR vectors to cross MALTB at or above 2200, thence....

TAKEOFF RUNWAY 9: Climb on heading 095° to 1220, then on heading 300° or as assigned by ATC, for RADAR vectors to cross MALTB at or above 2200, thence....

TAKEOFF RUNWAY 23: Climb on heading 233° or as assigned by ATC, for RADAR vectors to cross MALTB at or above 2200, thence....

TAKEOFF RUNWAY 27: Climb on heading 275° or as assigned by ATC, for RADAR vectors to cross MALTB at or above 2200, thence....

....on track 094° to HHOWE, then on (transition). Maintain ATC assigned altitude, expect filed altitude 10 minutes after departure.

**BROKK TRANSITION (HHOWE4.BROKK):  
INCON TRANSITION (HHOWE4.INCON):**

EC-1, 11 JUL 2024 to 08 AUG 2024