

VORTAC YKM	APP CRS	Rwy Idg	7604
116.0	244°	TDZE	1068
Chan 107		Apt Elev	1099

VOR/DME or TACAN RWY 27

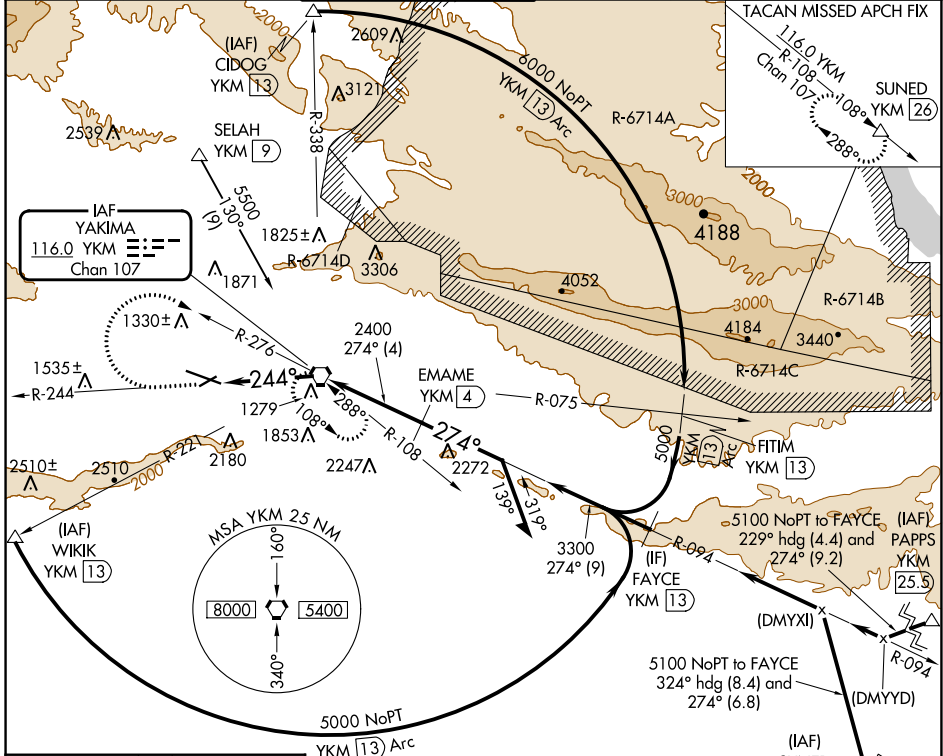
YAKIMA AIR TRML/MCALLISTER FLD (YKM)

⚠ Inoperative table does not apply. Circling NA south of Rwy 9-27. When local altimeter setting not received, procedure NA.

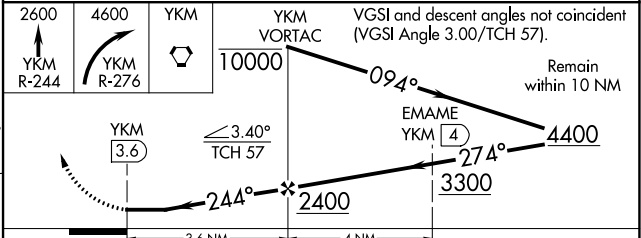
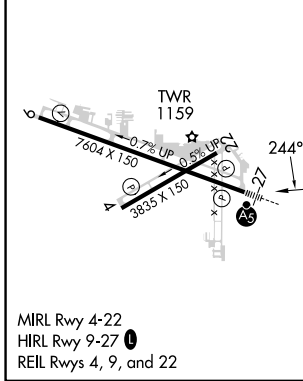
MALS 

MISSED APPROACH: Climb to 2600 via YKM VORTAC R-244, then climbing right turn to 4600 via YKM VORTAC R-276 to YKM VORTAC and hold, continue climb-in-hold to 4600 (TACAN aircraft, continue climb to 5000 via YKM VORTAC R-108 to SUNED/YKM 26 DME and hold west, right turns, 108° inbound).

ATIS	SPOKANE APP CON *	YAKIMA TOWER *	GND CON	CLNC DEL	UNICOM
125.25	123.8 263.15	133.25 (CTAF) 0 257.8	121.9	121.9	122.95



ELEV 1099	D	TDZE 1068
-----------	----------	-----------



CATEGORY	A	B	C	D
S-27	2100/60 1032 (1100-1¼)	2100-1½ 1032 (1100-1½)	2100-3	1032 (1100-3)
C CIRCLING	2100-1¼ 1001 (1100-1¼)	2100-1½ 1001 (1100-1½)	2100-3	2280-3 1181 (1200-3)

NW-1, 18 APR 2024 to 16 MAY 2024

NW-1, 18 APR 2024 to 16 MAY 2024