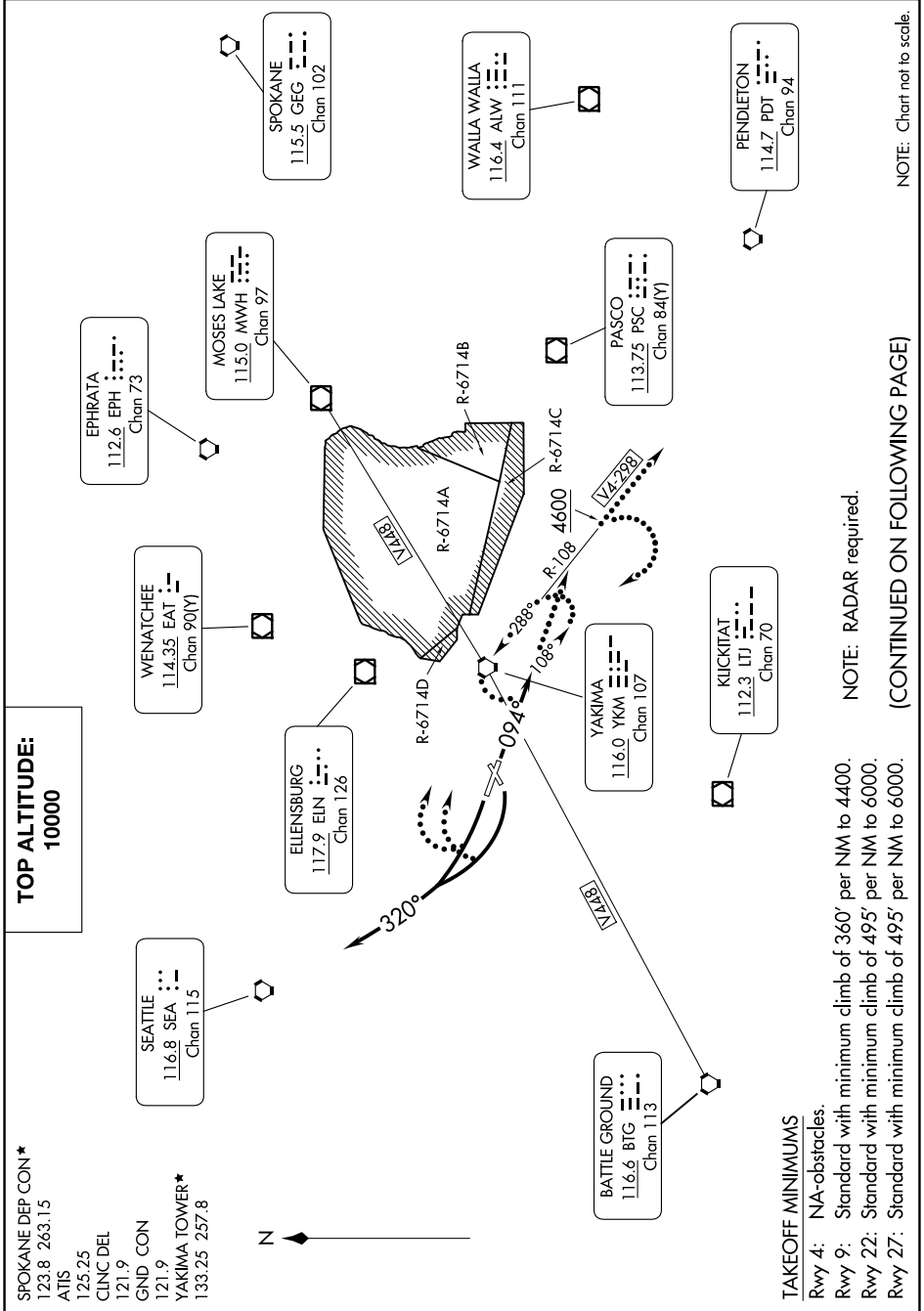


# NACHES FOUR DEPARTURE

YAKIMA AIR TRML/MCALLISTER FLD (YKM)  
AL-465 (FAA) YAKIMA, WASHINGTON

NW-1, 18 APR 2024 to 16 MAY 2024



SPOKANE DEP CON\*  
123.8 263.15  
ATIS  
125.25  
CINC DEL  
121.9  
GND CON  
121.9  
YAKIMA TOWER\*  
133.25 257.8

**TAKEOFF MINIMUMS**  
Rwy 4: N/A-obstacles.  
Rwy 9: Standard with minimum climb of 360' per NM to 4400.  
Rwy 22: Standard with minimum climb of 495' per NM to 6000.  
Rwy 27: Standard with minimum climb of 495' per NM to 6000.

NOTE: RADAR required.

(CONTINUED ON FOLLOWING PAGE)

NOTE: Chart not to scale.

# NACHES FOUR DEPARTURE

10NOV16

YAKIMA, WASHINGTON  
YAKIMA AIR TRML/MCALLISTER FLD (YKM)

NW-1, 18 APR 2024 to 16 MAY 2024