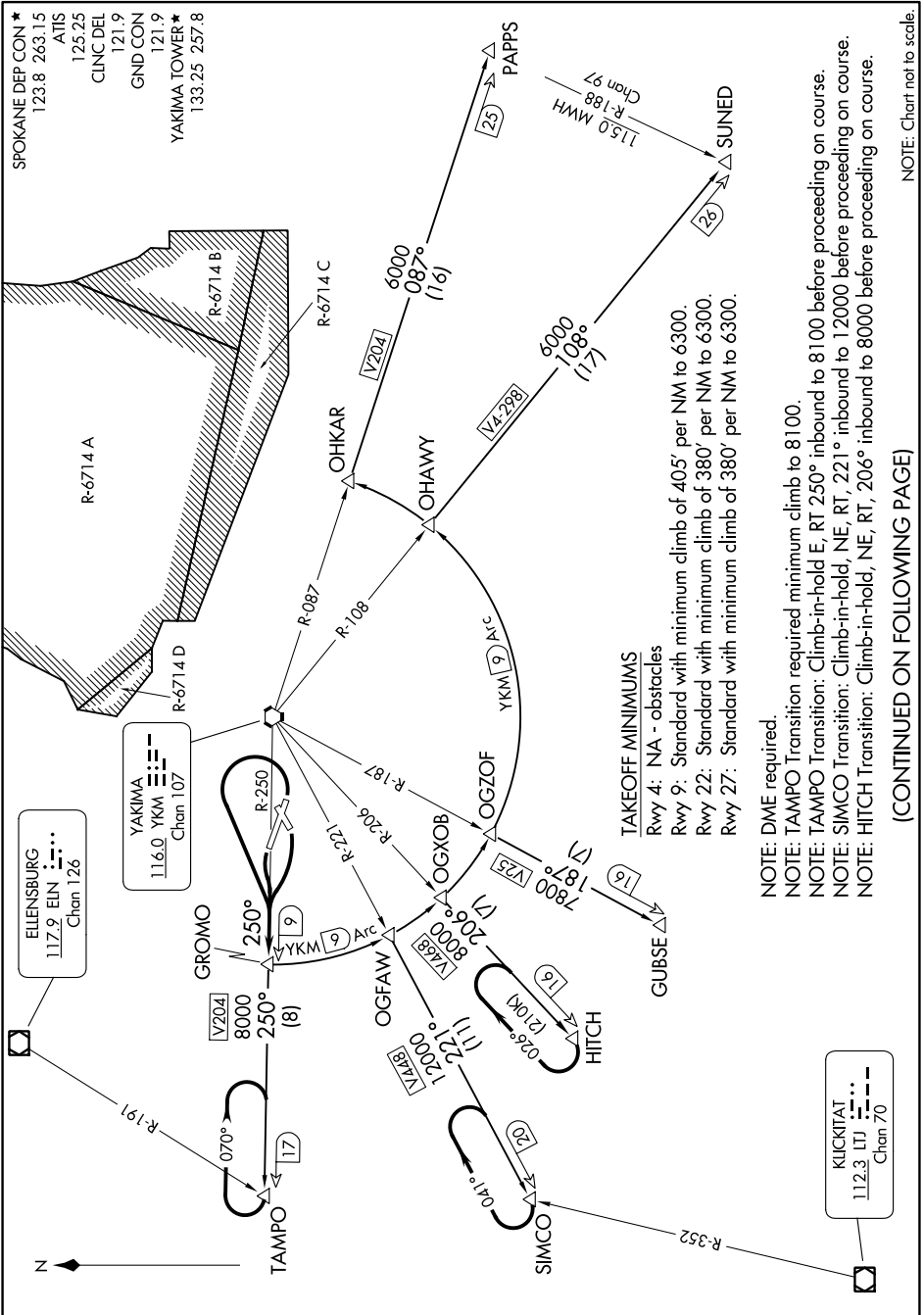


GROMO FOUR DEPARTURE

NW-1, 31 OCT 2024 to 28 NOV 2024



GROMO FOUR DEPARTURE

(CONTINUED ON FOLLOWING PAGE)

NW-1, 31 OCT 2024 to 28 NOV 2024

NOTE: Chart not to scale.

NOTE: DME required.

NOTE: TAMPO Transition required minimum climb to 8100.

NOTE: TAMPO Transition: Climb-in-hold E, RT 250° inbound to 8100 before proceeding on course.

NOTE: SIMCO Transition: Climb-in-hold, NE, RT, 221° inbound to 12000 before proceeding on course.

NOTE: HITCH Transition: Climb-in-hold, NE, RT, 206° inbound to 8000 before proceeding on course.

TAKEOFF MINIMUMS

Rwy 4: NA - obstacles

Rwy 9: Standard with minimum climb of 405' per NM to 6300.

Rwy 22: Standard with minimum climb of 380' per NM to 6300.

Rwy 27: Standard with minimum climb of 380' per NM to 6300.