

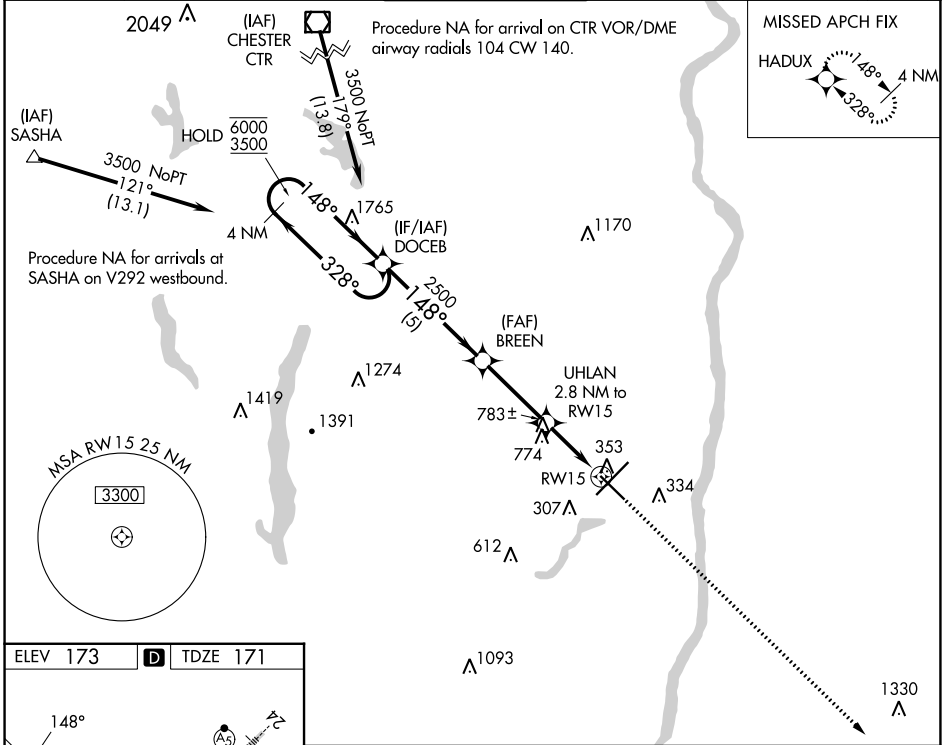
WAAS CH <b>60928</b> <b>W15A</b>	APP CRS <b>148°</b>	Rwy Idg TDZE Apt Elev	<b>6847</b> <b>171</b> <b>173</b>
--	------------------------	-----------------------------	---

# RNAV (GPS) RWY 15

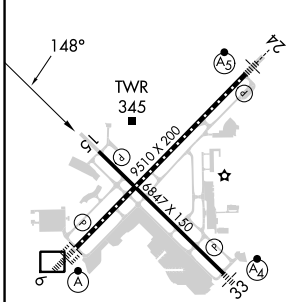
BRADLEY INTL (BDL)

RNP APCH-GPS.		MISSED APPROACH: Climb to 3000 direct HADUX and hold, continue climb-in-hold to 3000.	
<p><b>▼</b> Rwy 15 helicopter visibility reduction below 3/4 SM NA. For uncompensated Baro-VNAV systems, LNAV/VNAV NA below -17°C or above 54°C.</p>			

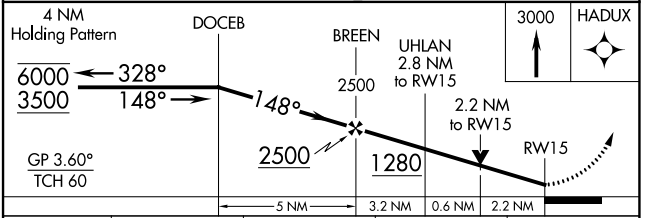
D-ATIS <b>118.15</b>	BRADLEY APP CON <b>123.95 290.55</b> (061°-240°) <b>125.35 281.5</b> (241°-060°)	BRADLEY TOWER <b>120.3 351.8</b>	GND CON <b>121.9 348.6</b>	CLNC DEL <b>121.75 322.3</b>	CPDLC
-------------------------	--	-------------------------------------	-------------------------------	---------------------------------	-------



ELEV 173	<b>D</b>	TDZE 171
----------	----------	----------



TDZ/CL Rwy 6 and 24	HIRL Rwy 6-24 and 15-33	REIL Rwy 6 and 15
---------------------	-------------------------	-------------------



CATEGORY	A	B	C	D
LPV DA	478-7/8 307 (400-7/8)			NA
LNAV/VNAV DA	1040-2 1/2 869 (900-2 1/2)			NA
LNAV MDA	1040-1 869 (900-1)	1040-1 1/4 869 (900-1 1/4)	1040-2 1/2 869 (900-2 1/2)	NA
<b>C</b> CIRCLING	1040-1 1/4 867 (900-1 1/4)	1100-2 3/4 927 (1000-2 3/4)		NA

NE-1, 31 OCT 2024 to 28 NOV 2024

NE-1, 31 OCT 2024 to 28 NOV 2024