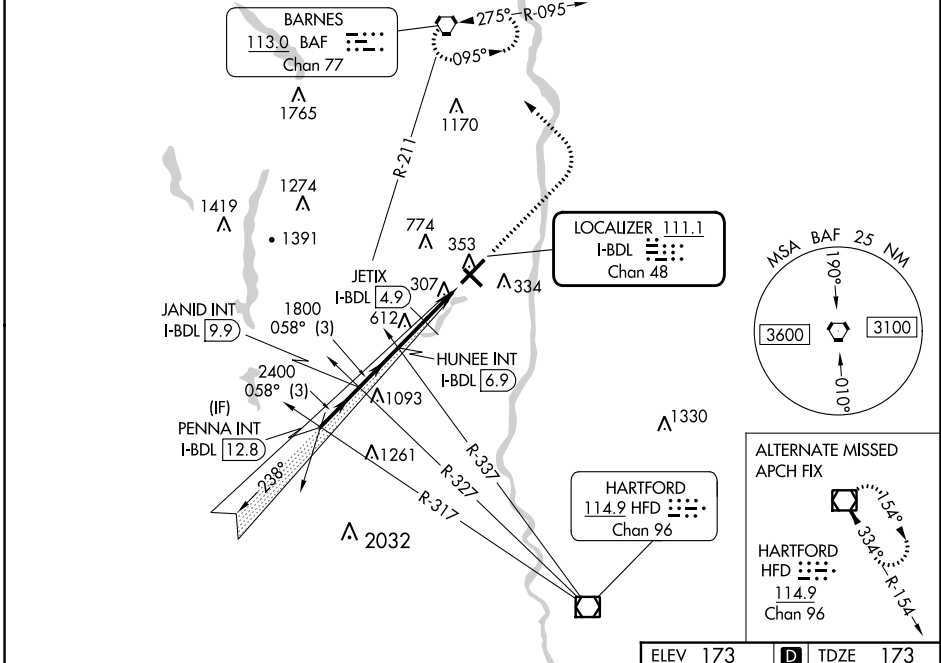


# COPTER ILS or LOC RWY 6 BRADLEY INTL (BDL)

LOC/DME I-BDL <b>111.1</b> Chan 48	APP CRS <b>058°</b>	Rwy Idg TDZE Apt Elev	<b>9509</b> <b>173</b> <b>173</b>
--	------------------------	-----------------------------	---

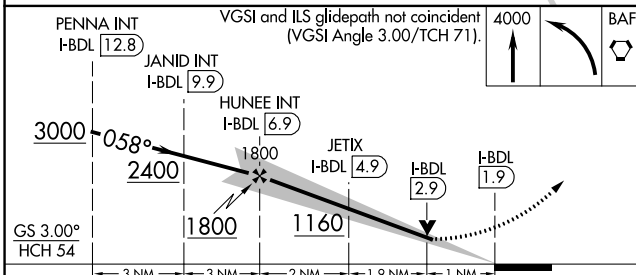
RADAR required for procedure entry.		ALSF-2	MISSED APPROACH: Climb to 4000 then left turn direct BAF VORTAC and hold.	
<p>▼ For inop ALS, increase H-ILS 6 visibility to RVR 2400 and H-LOC 6 visibility to RVR 4000.</p> <p>▲ NA</p>				

D-ATIS <b>118.15</b>	BRADLEY APP CON <b>123.95 290.55</b> (061°-240°) <b>125.35 281.5</b> (241°-060°)	BRADLEY TOWER <b>120.3 351.8</b>	GND CON <b>121.9 348.6</b>	CLNC DEL <b>121.75 322.3</b>	CPDLC
-------------------------	--	-------------------------------------	-------------------------------	---------------------------------	-------



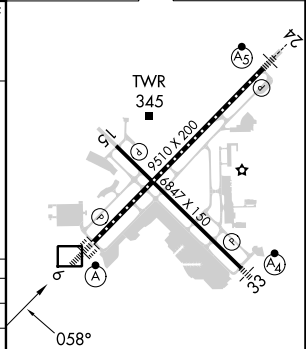
NE-1, 31 OCT 2024 to 28 NOV 2024

NE-1, 31 OCT 2024 to 28 NOV 2024



ELEV 173	<b>D</b> TDZE 173
----------	-------------------

CATEGORY	COPTER	
H-ILS 6	273/12	100 (100-¼)
H-LOC 6	1160/24	987 (1000-½)
H-ILS 6	CAT II RA 101	
JETIX FIX MINIMUMS (DME REQUIRED)		
H-LOC 6	560/24	387 (400-½)



TDZ/CL Rwy 6 and 24					
HIRL Rwys 6-24 and 15-33					
REIL Rwys 6 and 15					
FAF to MAP 4.9 NM					
Knots	45	60	75	90	105
Min:Sec	6:32	4:55	3:55	3:16	2:48

# COPTER ILS or LOC RWY 6