

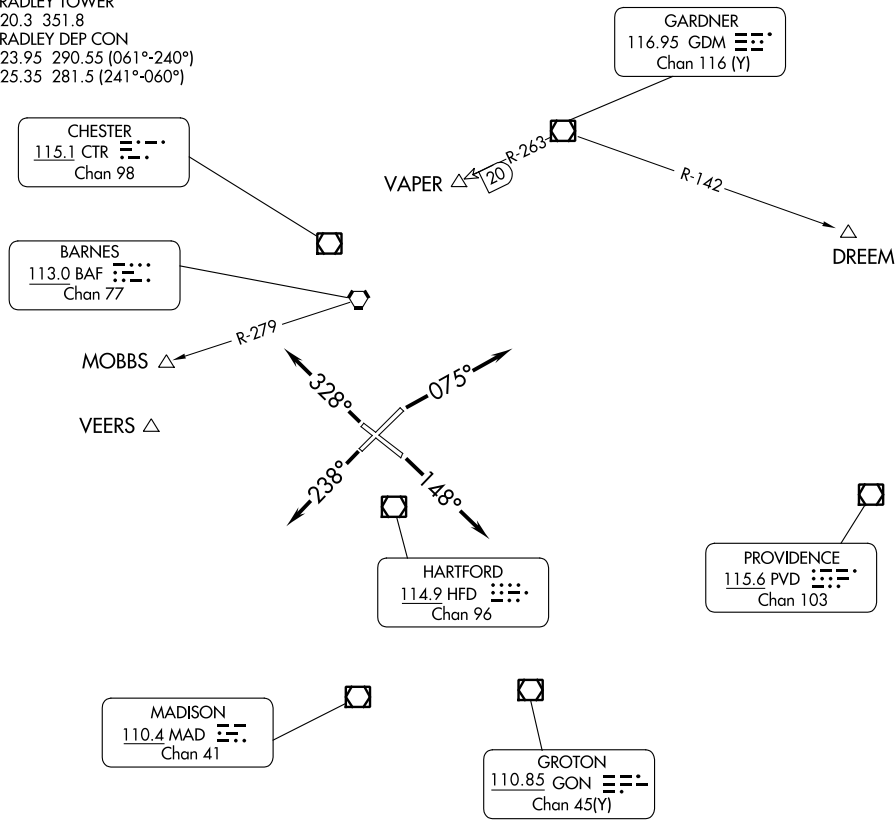
BRADLEY SIX DEPARTURE

BRADLEY INTL (BDL)
WINDSOR LOCKS, CONNECTICUT

D-ATIS 118.15
 CLNC DEL 121.75 322.3
 GND CON 121.9 348.6
 CPDLC
 BRADLEY TOWER 120.3 351.8
 BRADLEY DEP CON 123.95 290.55 (061°-240°)
 125.35 281.5 (241°-060°)

NOTE: RADAR required.
 NOTE: Initial departure headings are predicated on avoiding noise sensitive areas, flight crew awareness and compliance is important in minimizing noise impacts on surrounding communities.
 NOTE: Appropriate departure frequency to be assigned by ATC.

TOP ALTITUDE:
4000



NE-1, 31 OCT 2024 to 28 NOV 2024

NE-1, 31 OCT 2024 to 28 NOV 2024

TAKEOFF MINIMUMS

Rwys 6, 15, 24: Standard.
 Rwy 33: Standard with minimum climb of 340' per NM to 1000.

NOTE: Chart not to scale.

DEPARTURE ROUTE DESCRIPTION

- TAKEOFF RUNWAY 6:** Climb heading 075° or as assigned, thence....
- TAKEOFF RUNWAY 15:** Climb heading 148° or as assigned, thence....
- TAKEOFF RUNWAY 24:** Climb heading 238° or as assigned, thence....
- TAKEOFF RUNWAY 33:** Climb heading 328° or as assigned, thence....

....on RADAR vectors to filed/assigned route or depicted fix. Maintain 4000 or assigned altitude, expect clearance to requested altitude/flight level 10 minutes after departure.

BRADLEY SIX DEPARTURE

WINDSOR LOCKS, CONNECTICUT
BRADLEY INTL (BDL)