

WICHITA FALLS, TEXAS

HI-ILS or LOC/DME Z RWY 33L



SHEPPARD AFB/  
WICHITA FALLS MUNI (KSPS)

LOC I-SPS <b>109.7</b>	APCH CRS <b>333°</b>	Rwy Idg 33L TDZE 33L Arprt Elev <b>13,100 33C 10,003</b> <b>1000 33C 989</b> <b>1019</b>
---------------------------	-------------------------	---

[USAF]

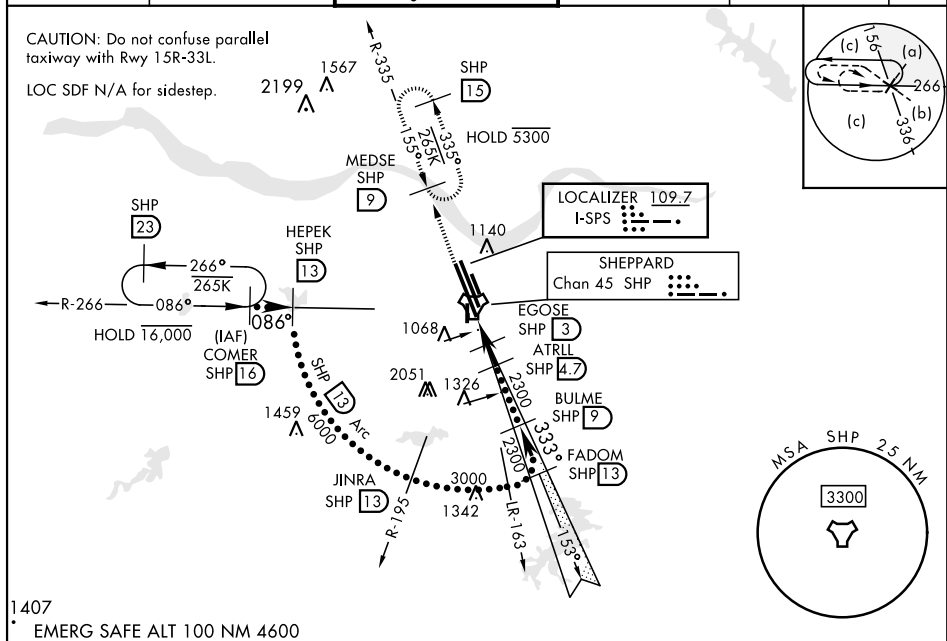
DME required

▼ \* When ALS inop, increase CAT CDE vis to ¾ mile.  
 \*\* When ALS inop, increase CAT CDE vis to 1 mile.  
 \*\*\* Circling not authorized W of Rwy 15R-33L.

Rwy 33L MALS  Rwy 33C ALSF-1 

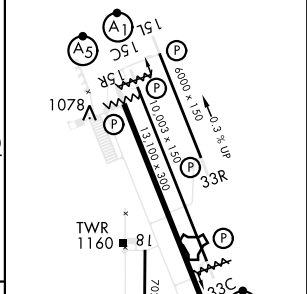
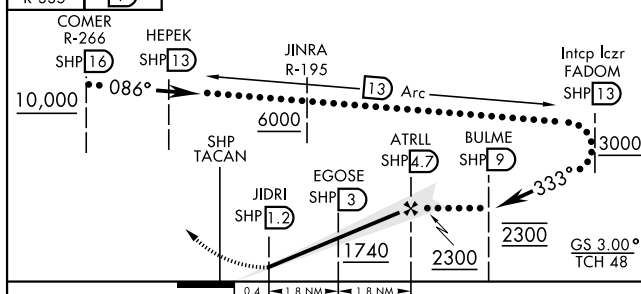
MISSED APPROACH: Climb and maintain 3300, intercept SHP TACAN R-335 to SHP R-335/9 DME (MEDSE) and hold.

ATIS ★ <b>132.05 269.9</b>	APP CON <b>118.2 269.025</b>	TOWER ★ <b>119.75 279.525</b> (CTAF)	GND CON <b>125.5 289.4</b>	CLNC DEL <b>121.2 282.225</b>	ASR
-------------------------------	---------------------------------	---	-------------------------------	----------------------------------	-----

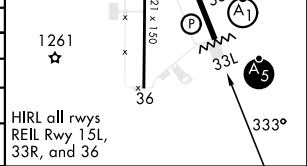


3300 Intcp SHP R-335	MEDSE SHP R-335 <b>9</b>	VGSI and ILS glidepath not coincident (VGSI Angle 3.00/TCH 56).
----------------------	--------------------------	---

ELEV 1019	TDZE 33L 1000
	TDZE 33C 989



CATEGORY	C	D	E
S-ILS 33L *	1200-½	200 (200-½)	
S-LOC 33L **	1340-½	340 (400-½)	
SIDESTEP ** 33C	1440-7/8	451 (500-7/8)	
*** CIRCLING	1480-1½ 461 (500-1½)	2020-3 1001 (1100-3)	2080-3 1061 (1100-3)



WICHITA FALLS, TEXAS

33°59'N-98°30'W

SHEPPARD AFB/WICHITA FALLS MUNI (KSPS)

Amdt 8 14JUL22

HI-ILS or LOC/DME Z RWY 33L

SC-2, 03 OCT 2024 to 31 OCT 2024

SC-2, 03 OCT 2024 to 31 OCT 2024