

WICHITA, KANSAS

# RNAV (GPS) RWY 1L

WAAS CH 71272 W01A	APCH CRS 008°	Rwy ldg TDZE 12,000 1347	Arprt Elev 1372
--------------------------	------------------	--------------------------------	--------------------

(USAF)

MC CONNELL AFB (KIAB)

DME/DME RNP-0.3 NA



MISSED APPROACH: Climb to 4000 direct WITBA and hold.

\* When ALS inop, increase RVR to 40, vis to 3/4 mile.  
\*\* When ALS inop, increase vis to 1 1/4 miles.

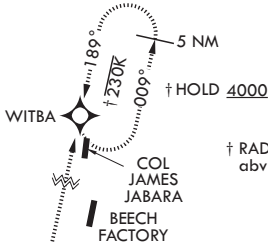
D-ATIS 124.65 269.9	WICHITA APP CON 134.8 269.1	TOWER 127.25 291.775	GND CON 118.0 275.8
------------------------	--------------------------------	-------------------------	------------------------

\*\*\* When ALS inop, increase CAT AB RVR to 55, vis to 1 mile; CAT CDE RVR to 60, vis to 1 1/8 miles.

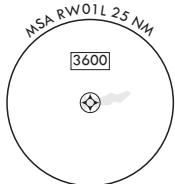
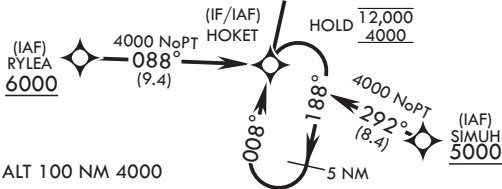
\*\*\*\* Circling not authorized west of Rwy 1L-19R.

1579

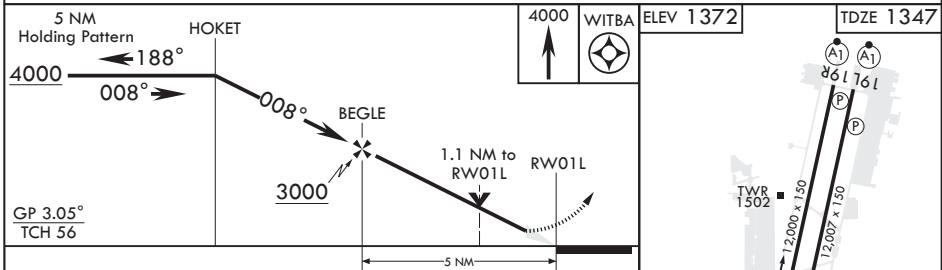
For uncompensated Baro-VNAV systems, Procedure NA below -17°C (2°F) or above 49°C (121°F).



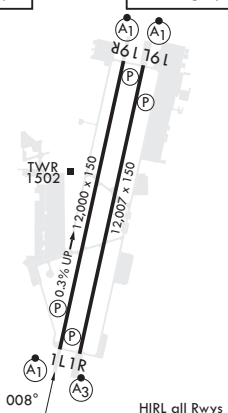
† HOLD 4000  
† RADAR required for holding abv 5000 or abv 230 KIAS



EMERG SAFE ALT 100 NM 4000



CATEGORY	A	B	C	D	E
LPV DA*	1547/24		200	(200-1/2)	
LNAV/VNAV DA**	1732/40		385	(400-3/8)	
LNAV MDA***	1740/24	393 (400-1/2)	1740/35	393	(400-3/8)
CIRCLING****	1900-1	528 (600-1)	1900-1 1/2 528 (600-1 1/2)	2400-3	1028 (1100-3)



WICHITA, KANSAS  
Amdt 4 28DEC23

37°37'N - 97°16'W

MC CONNELL AFB (KIAB)

# RNAV (GPS) RWY 1L

NC-2, 03 OCT 2024 to 31 OCT 2024

NC-2, 03 OCT 2024 to 31 OCT 2024