

WICHITA, KANSAS

# RNAV (GPS) RWY 19L

23362

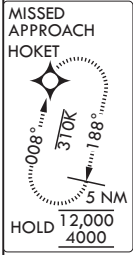
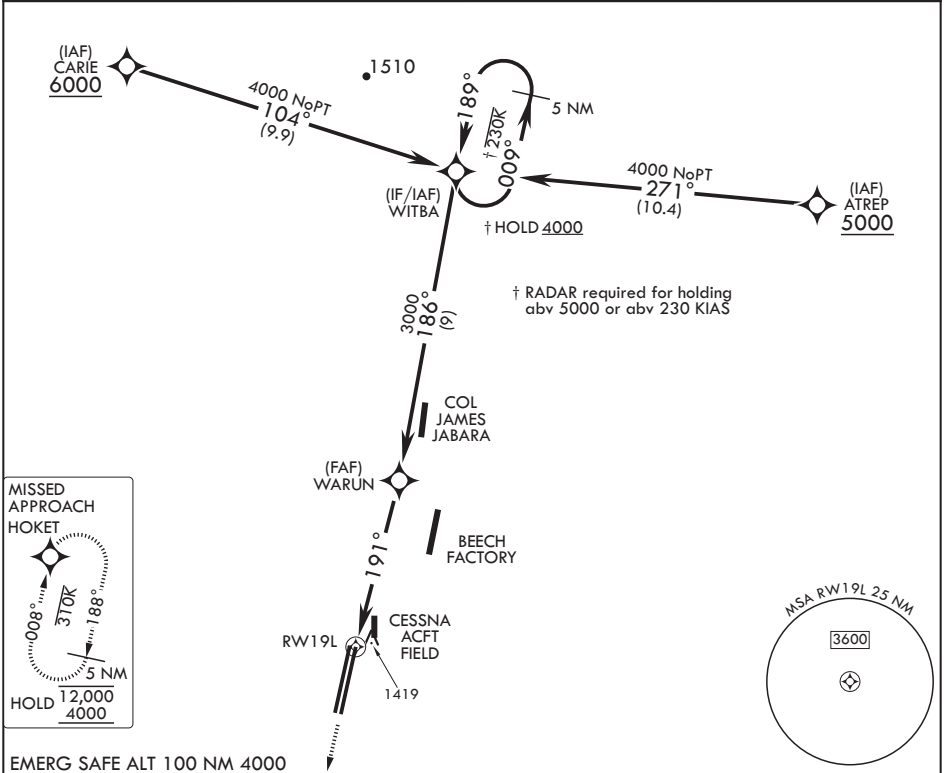
APCH CRS <b>191°</b>	Rwy Idg TDZE Arpt Elev <b>12,007</b> <b>1365</b> <b>1372</b>
-------------------------	---

- (USAF)

MC CONNELL AFB (KIAB)

DME/DME RNP-0.3 NA	ALSIF-1	MISSED APPROACH: Climbing left turn to 4000 direct HOKET and hold.
<p>▼ * When ALS inop, increase CAT AB RVR to 55, vis to 1 mile; CAT CDE vis to 1 1/4 miles.</p> <p>** Circling NA west of Rwy 1L-19R.</p>		

D-ATIS <b>124.65 269.9</b>	WICHITA APP CON <b>134.8 269.1</b>	TOWER <b>127.25 291.775</b>	GND CON <b>118.0 275.8</b>
-------------------------------	---------------------------------------	--------------------------------	-------------------------------



EMERG SAFE ALT 100 NM 4000

4000 HOKET	5 NM Holding Pattern					ELEV 1372	TDZE 1365
	WITBA 009° 4000 189° WARUN 186° 3000 191° RWY 19L 1.2 NM to RWY 19L ≤ 3.02° TCH 55 4.9 NM					TWR 1502 12,000 x 150 12,007 x 150 191° 1419 1L 1R HIRL all Rwys	
CATEGORY	A	B	C	D	E		
LNAV MDA*	1800/40		435	(500-3/4)			
CIRCLING**	1900-1 528 (600-1)		1900-1 1/2 528 (600-1 1/2)	2400-3 1028 (1100-3)			

WICHITA, KANSAS

37°37'N - 97°16'W

MC CONNELL AFB (KIAB)

Amdt 6 28DEC23

# RNAV (GPS) RWY 19L

NC-2, 08 AUG 2024 to 05 SEP 2024

NC-2, 08 AUG 2024 to 05 SEP 2024