

OAK HARBOR, WASHINGTON

TACAN Y RWY 25

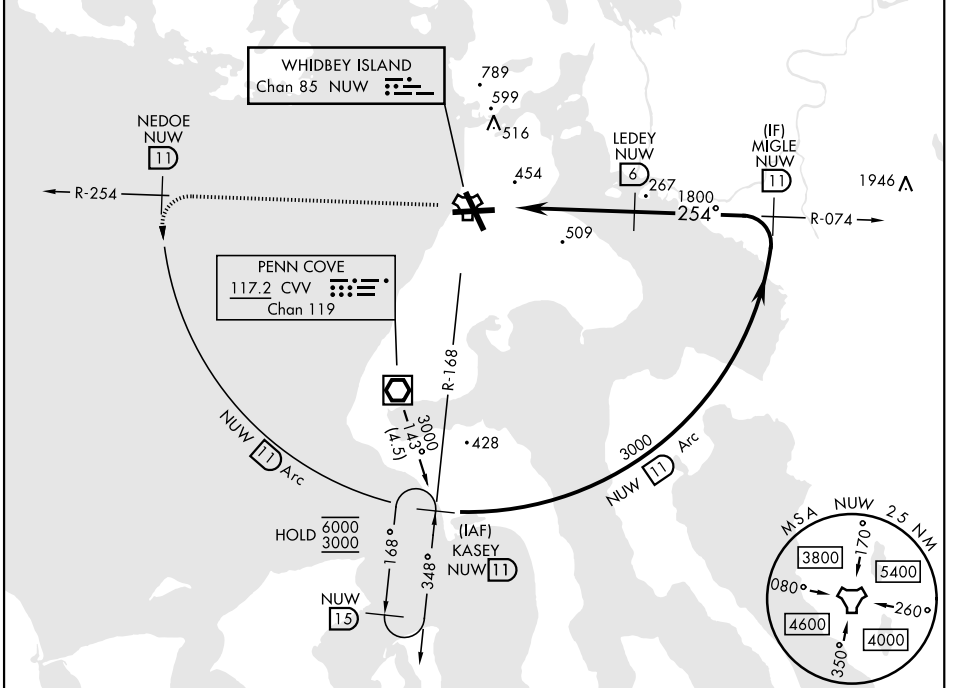
TACAN NUV Chan 85	APCH CRS 254°	Rwy ldg TDZE Arprt Elev	8000 28 47
----------------------	------------------	-------------------------------	------------------

[USN]

WHIDBEY ISLAND NAS (AULT FLD) (KNUW)

▼ *When ALS inop, increase CAT AB RVR to 55, vis to 1 mile; CAT CDE vis to 2 miles.		ALSF-1 	MISSED APPROACH: Climb to 3000 via NUV TACAN R-254 to NEDOE, then arc SW of NUV via 11 DME Arc to KASEY and hold.		
ATIS 134.15 281.5	WHIDBEY APP CON 120.7 270.8 (E) 118.2 285.65 (W)	WHIDBEY TOWER 127.9 340.2	GND CON 121.75 336.4	CLNC DEL 135.1 379.9	ASR/PAR

CAUTION: CAT CDE intmed seg length 5 NM.

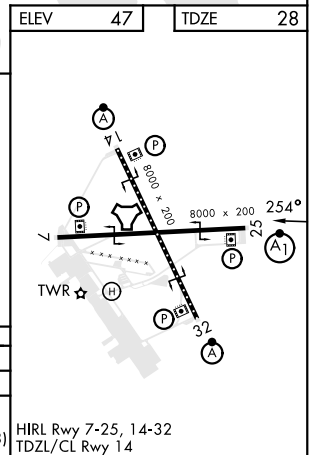


NW-1, 31 OCT 2024 to 28 NOV 2024

NW-1, 31 OCT 2024 to 28 NOV 2024

EMERG SAFE ALT 100 NM 15,500

3000 NUW R-254	NEDOE NUW 11	NUW 11 Arc			
NUW TACAN	KIGVE NUW 1.7	NUW 3	LEDEY NUW 6	MIGLE NUW 11	
0.8		4.3 NM		1800	3000
				254°	3.17° TCH 50
CATEGORY	A	B	C	D	E
S-25*	760/30	732 (800- $\frac{3}{4}$)	760-1 $\frac{5}{8}$	732 (800-1 $\frac{1}{2}$)	
CIRCLING	760-1	713 (800-1)	860-2 $\frac{1}{2}$ 813 (900-2 $\frac{1}{2}$)	900-2 $\frac{3}{4}$ 853 (900-2 $\frac{3}{4}$)	1200-3 1153 (1200-3)



OAK HARBOR, WASHINGTON

48° 21' N-122° 39' W

WHIDBEY ISLAND NAS (AULT FLD) (KNUW)

Amdt 4 31OCT24

TACAN Y RWY 25