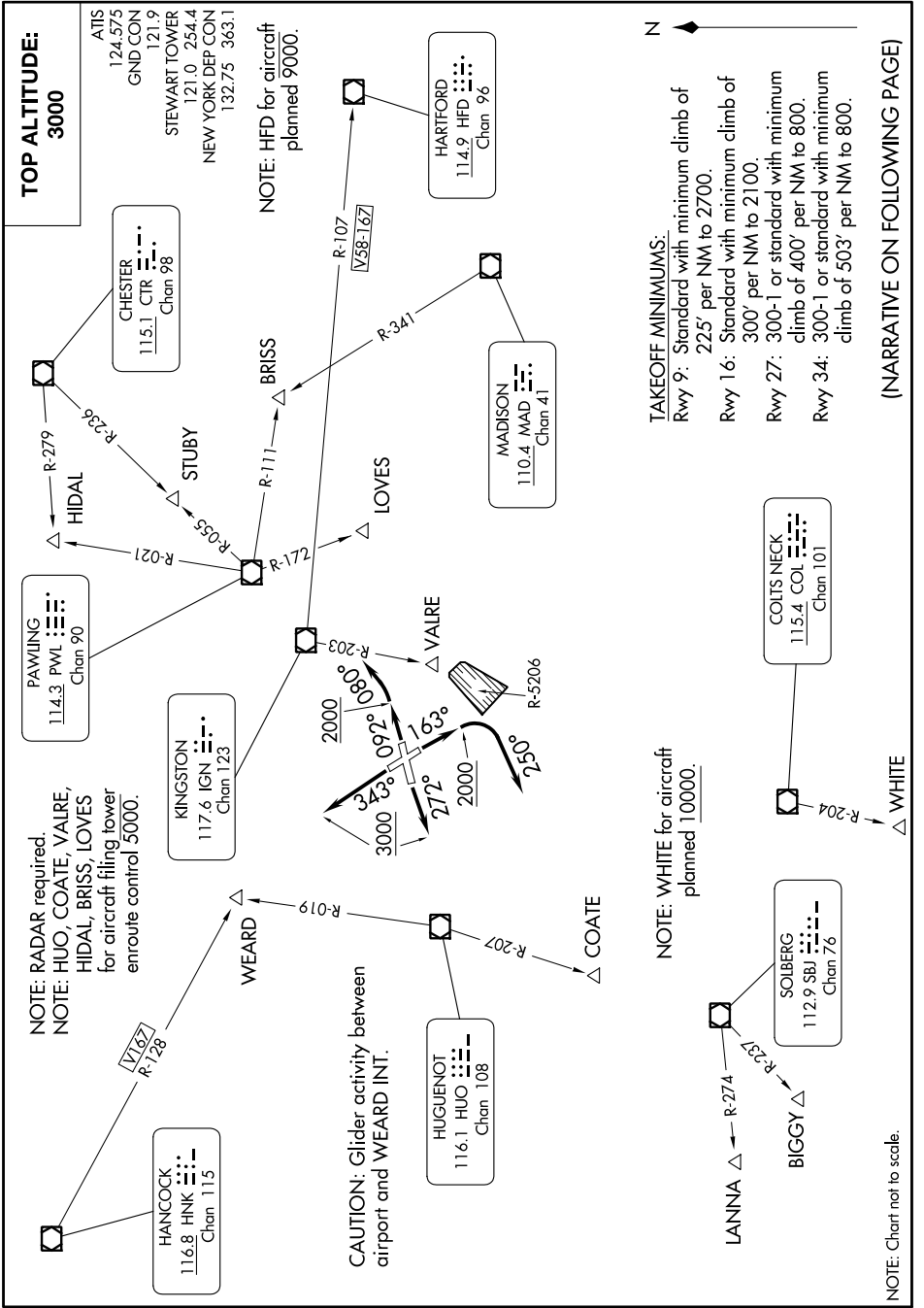


STEWART NINE DEPARTURE

AL-450 (FAA)

NEW YORK STEWART INTL (SWF)  
NEW YORK, NEW YORK

NE-2, 08 AUG 2024 to 05 SEP 2024



**TOP ALTITUDE:**  
3000

ATIS  
124.575  
GND CON  
121.9  
STEWART TOWER  
121.0 254.4  
NEW YORK DEP CON  
132.75 363.1

NOTE: HFD for aircraft  
planned 9000.

**TAKEOFF MINIMUMS:**  
Rwy 9: Standard with minimum climb of 225' per NM to 2700.  
Rwy 16: Standard with minimum climb of 300' per NM to 2100.  
Rwy 27: 300-1 or standard with minimum climb of 400' per NM to 800.  
Rwy 34: 300-1 or standard with minimum climb of 503' per NM to 800.

(NARRATIVE ON FOLLOWING PAGE)

NOTE: WHITE for aircraft  
planned 10000.

NOTE: Chart not to scale.

STEWART NINE DEPARTURE

NE-2, 08 AUG 2024 to 05 SEP 2024