

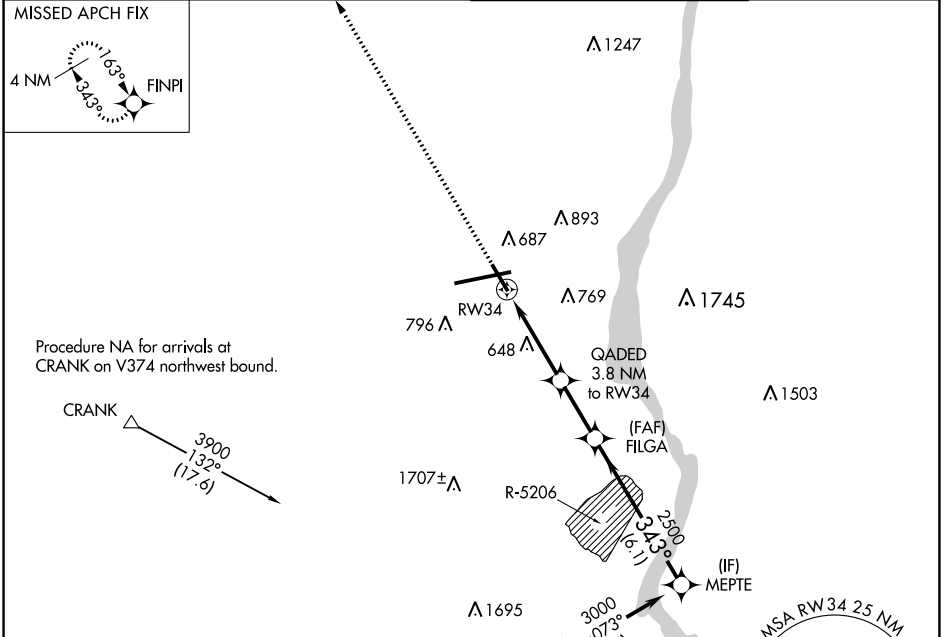
WAAS CH 90217 W34A	APP CRS 343°	Rwy Idg TDZE 462 Apt Elev 491	6004 462 491
--	------------------------	---	---

RNAV (GPS) RWY 34

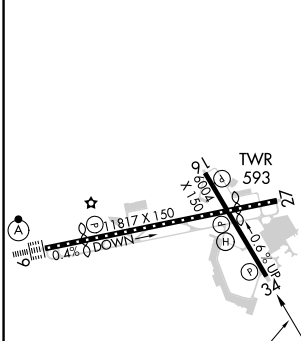
NEW YORK STEWART INTL (SWF)

RNP APCH - GPS.	MISSED APPROACH: Climb to 3900 direct FINPI and hold.
Procedure NA when restricted area R-5206 is active.	

ATIS 124.575	NEW YORK APP CON 132.75 363.1	STEWART TOWER 121.0 254.4	GND CON 121.9
------------------------	---	-------------------------------------	-------------------------



ELEV 491	D	TDZE 462
----------	----------	----------



3900	FINPI	QAGED 3.8 NM to RW34	FILGA 2500	MEPTE
		1.7 NM to RW34		3000
		1.7 NM	2.1 NM	2.4 NM
			6.1 NM	
343°				3000
				GP 3.00° TCH 50
TDZ/CL Rwy 9				
HIRL Rws 9-27 and 16-34				
REIL Rws 16, 27 and 34				
C CIRCLING	1200-1	709 (800-1)	1200-2 709 (800-2)	1200-2½ 709 (800-2½)

NE-2, 05 SEP 2024 to 03 OCT 2024

NE-2, 05 SEP 2024 to 03 OCT 2024