

APP CRS Rwy Idg **9817**
272° TDZE **469**
 Apt Elev **491**

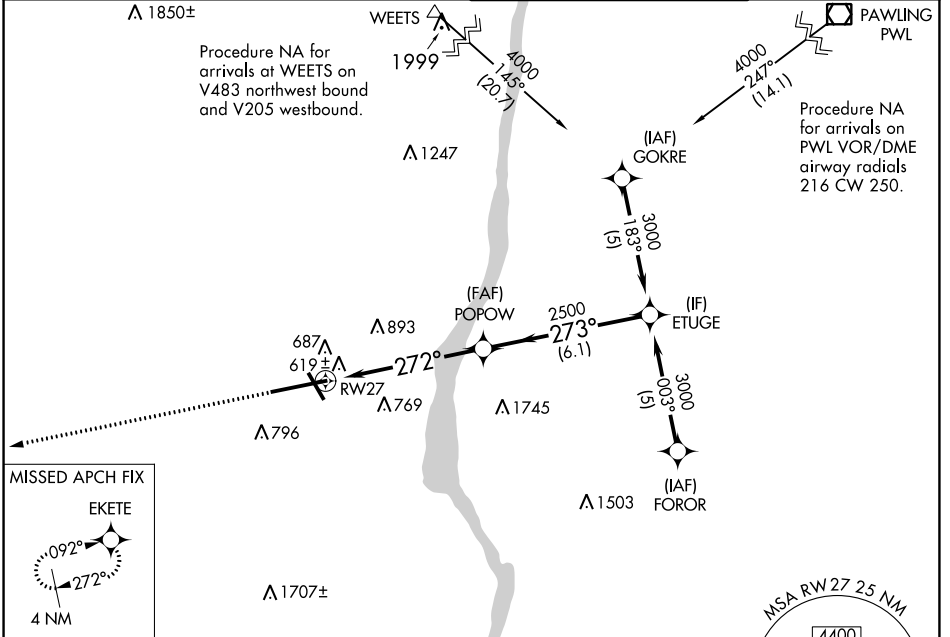
RNAV (GPS) RWY 27

NEW YORK STEWART INTL (SWF)

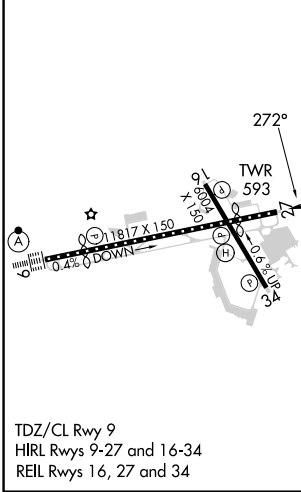
RNP APCH. MISSED APPROACH: Climb to 3000 direct EKETE and hold.

⚠ For uncompensated Baro-VNAV systems, LNAV/VNAV NA below -15°C or above 54°C.

ATIS 124.575	NEW YORK APP CON 132.75 363.1	STEWART TOWER 121.0 254.4	GND CON 121.9
------------------------	---	-------------------------------------	-------------------------



ELEV **491** **D** TDZE **469**



3000 ↑ EKETE	POPOW 2500	ETUGE 3000	Procedure Turn NA
* LNAV only.		GP 3.00° TCH 55	
* 1.5 NM to RW27			
1.5 NM		4.6 NM	
		6.1 NM	

CATEGORY	A	B	C	D
LNAV/DA VNAV	1048-2		579 (600-2)	
LNAV MDA	1000-1	531 (600-1)	1000-1½ 531 (600-1½)	1000-1¾ 531 (600-1¾)
C CIRCLING	1200-1	709 (800-1)	1200-2 709 (800-2)	1200-2½ 709 (800-2½)

NE-2, 03 OCT 2024 to 31 OCT 2024

NE-2, 03 OCT 2024 to 31 OCT 2024