

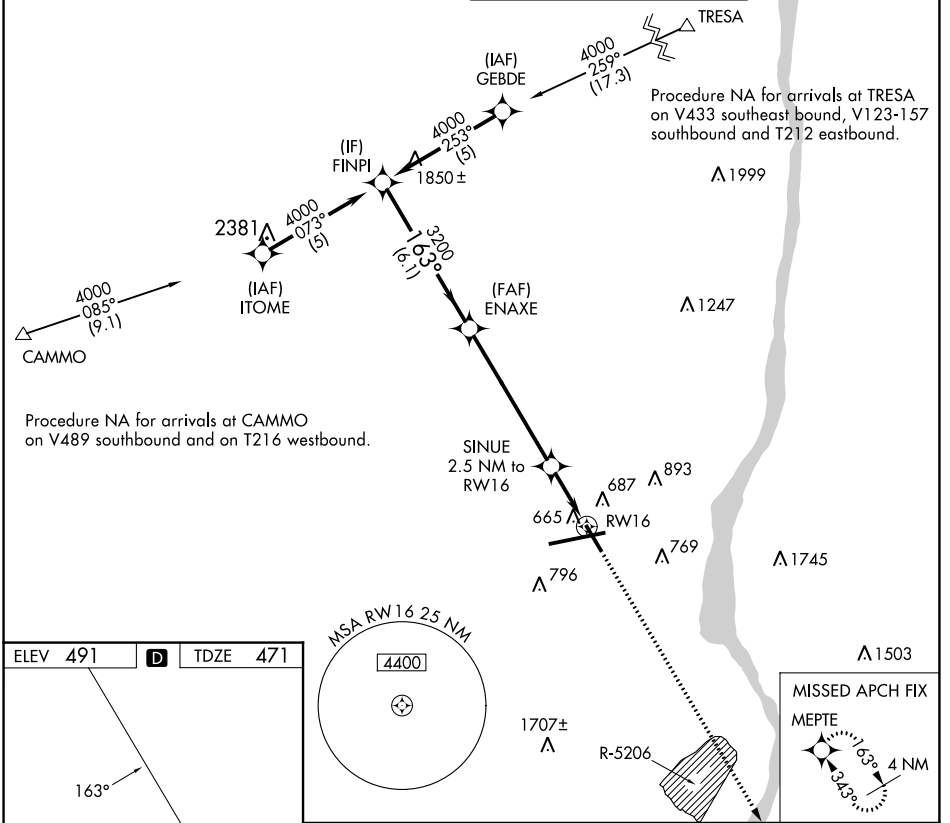
APP CRS	Rwy Idg	6004
163°	TDZE	471
	Apt Elev	491

RNAV (GPS) RWY 16

NEW YORK STEWART INTL (SWF)

RNP APCH-GPS.	MISSED APPROACH: Climb to 4000 direct MEPT E and hold, continue climb-in-hold to 4000.
<p>▼ Rwy 16 helicopter visibility reduction below 3/4 SM NA.</p> <p>▲ Procedure NA when restricted area R-5206 is active.</p>	

ATIS 124.575	NEW YORK APP CON 132.75 363.1	STEWART TOWER 121.0 254.4	GND CON 121.9
------------------------	---	-------------------------------------	-------------------------



NE-2, 03 OCT 2024 to 31 OCT 2024

NE-2, 03 OCT 2024 to 31 OCT 2024

ELEV	491	D	TDZE	471
------	------------	----------	------	------------

TDZ/CL Rwy 9
HIRL Rws 9-27 and 16-34
REIL Rws 16, 27 and 34

	<p>VGSI and descent angles not coincident (VGSI Angle 3.00/TCH 53).</p>	<p>4000</p> <p>MEPT E</p>															
<p>FINPI</p> <p>ENAXE</p> <p>SINUE 2.5 NM to RW16</p> <p>RW16</p>	<p>6.1 NM</p> <p>5.8 NM</p> <p>0.5 NM</p> <p>2 NM</p>	<p>2 NM to RW16</p>															
<table border="1"> <tr> <th>CATEGORY</th> <th>A</th> <th>B</th> <th>C</th> <th>D</th> </tr> <tr> <td>LNNAV MDA</td> <td>1140-1</td> <td>669 (700-1)</td> <td>1140-1 7/8</td> <td>669 (700-1 7/8)</td> </tr> <tr> <td>C CIRCLING</td> <td>1200-1</td> <td>709 (800-1)</td> <td>1200-2 709 (800-2)</td> <td>1200-2 1/4 709 (800-2 1/4)</td> </tr> </table>	CATEGORY	A	B	C	D	LNNAV MDA	1140-1	669 (700-1)	1140-1 7/8	669 (700-1 7/8)	C CIRCLING	1200-1	709 (800-1)	1200-2 709 (800-2)	1200-2 1/4 709 (800-2 1/4)		
CATEGORY	A	B	C	D													
LNNAV MDA	1140-1	669 (700-1)	1140-1 7/8	669 (700-1 7/8)													
C CIRCLING	1200-1	709 (800-1)	1200-2 709 (800-2)	1200-2 1/4 709 (800-2 1/4)													