

LOC I-SWF 110.1	APP CRS 092°	Rwy Idg 8817
		TDZE 482
		Apt Elev 491

ILS RWY 9 (CAT II & III)

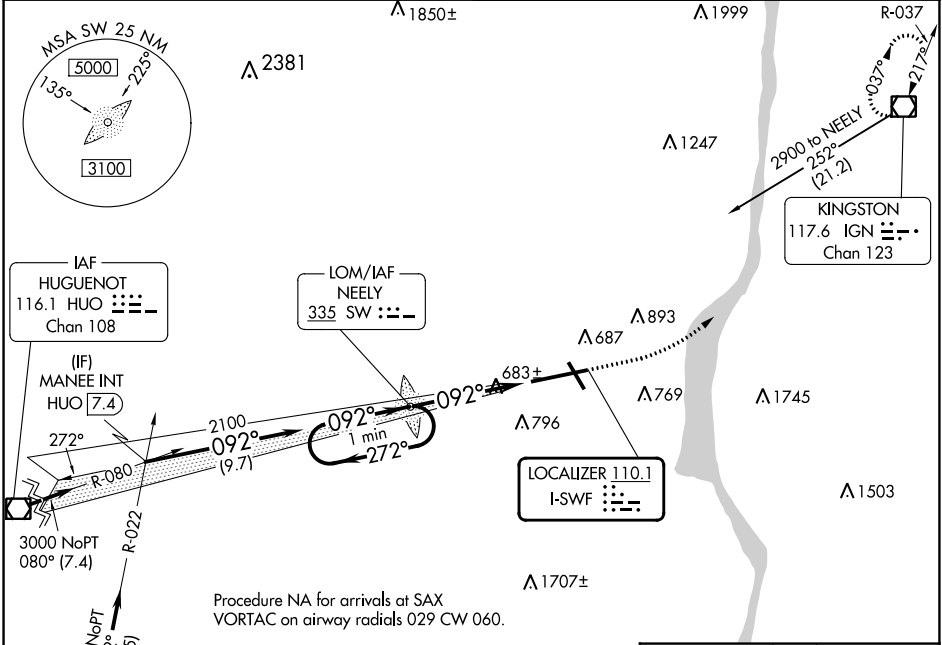
NEW YORK STEWART INTL (SWF)

⚠ CAT II: RVR 1000 authorized with specific OPSPEC, MSPEC, or LOA and use of autoland or HUD to touchdown.



MISSED APPROACH: Climb to 1200 then climbing left turn to 3000 direct IGN VOR/DME and hold.

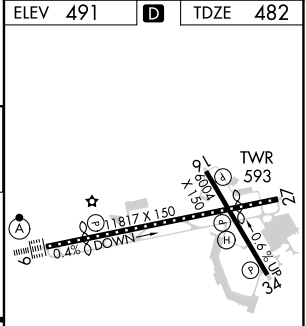
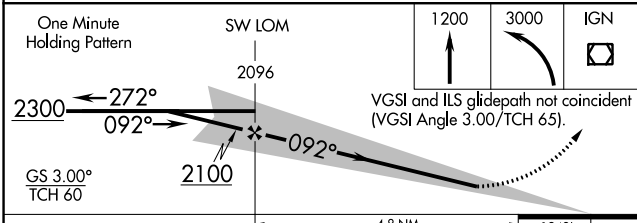
ATIS 124.575	NEW YORK APP CON 132.75 363.1	STEWART TOWER 121.0 254.4	GND CON 121.9
------------------------	---	-------------------------------------	-------------------------



NE-2, 03 OCT 2024 to 31 OCT 2024

NE-2, 03 OCT 2024 to 31 OCT 2024

ELEV 491	D	TDZE 482
----------	----------	----------



CATEGORY	A	B	C	D
S-ILS 9		CAT II RA 97/12	100	DA 582
S-ILS 9		CAT IIIa RVR 07		
S-ILS 9		CAT IIIb RVR 06		
S-ILS 9		CAT IIIc NA		

CATEGORY II & III ILS SPECIAL AIRCREW & AIRCRAFT CERTIFICATION REQUIRED

TDZ/CL Rwy 9
HIRL Rwy 9-27 and 16-34
REIL Rwy 16, 27 and 34