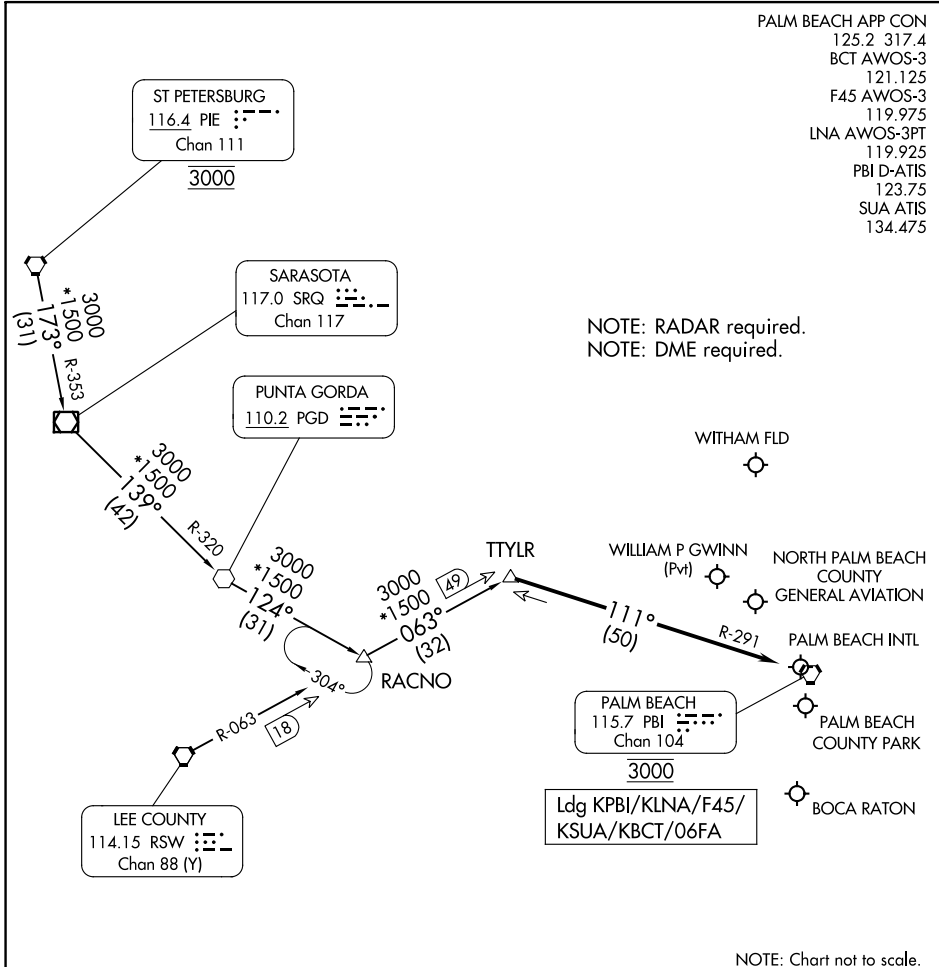


TTYLR THREE ARRIVAL

WEST PALM BEACH, FLORIDA

PALM BEACH APP CON
 125.2 317.4
 BCT AWOS-3
 121.125
 F45 AWOS-3
 119.975
 LNA AWOS-3PT
 119.925
 PBI D-ATIS
 123.75
 SUA ATIS
 134.475



NOTE: RADAR required.
 NOTE: DME required.

SE-3, 11 JUL 2024 to 08 AUG 2024

SE-3, 11 JUL 2024 to 08 AUG 2024

NOTE: Chart not to scale.

ARRIVAL ROUTE DESCRIPTION

PUNTA GORDA TRANSITION (PGD.TTYLR3): From over PGD VOR on PGD R-124 to RACNO, then on RSW R-063 to TTYLR, thence. . .

RACNO TRANSITION (RACNO.TTYLR3): From over RACNO on RSW R-063 to TTYLR, thence. . .

ST PETERSBURG TRANSITION (PIE.TTYLR3): From over PIE VORTAC on PIE R-173 and SRQ R-353 to SRQ VOR/DME, then on SRQ R-139 and PGD R-320 to PGD VOR, then on PGD R-124 to RACNO, then on RSW R-063 to TTYLR, thence. . .

LANDING ALL AIRPORTS: From TTYLR on PALM BEACH VORTAC (PBI) R-291 to cross PBI VORTAC at 3000. Expect RADAR vectors.

TTYLR THREE ARRIVAL

WEST PALM BEACH, FLORIDA