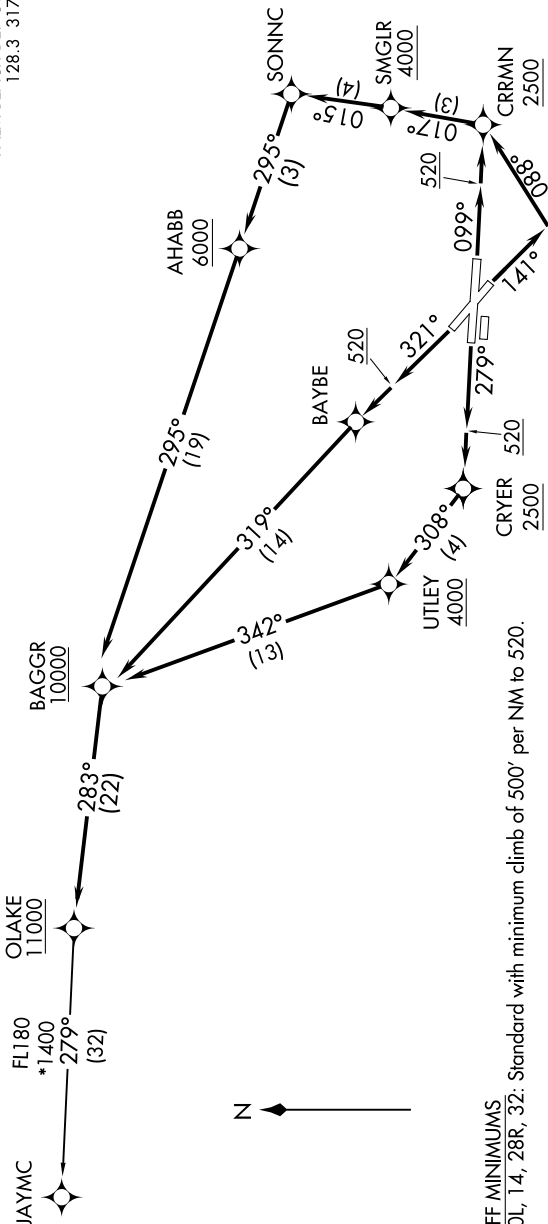


# OLAKE TWO DEPARTURE (RNAV)

D-ATIS 123.75  
 CLNC DEL 121.6 284.6  
 CPDIC  
 GND CON 121.9 284.6  
 PALM BEACH TOWER 119.1 257.8  
 PALM BEACH DEP CON 128.3 317.4

RNAV 1 - DME/DME/IRU or GPS.  
 RADAR required for non-GPS equipped aircraft.

**TOP ALTITUDE:**  
**11000**



TAKEOFF MINIMUMS  
 Rwy 10L, 14, 28R, 32: Standard with minimum climb of 500' per NM to 520.

NOTE: Turbo-jets only.

(NARRATIVE ON FOLLOWING PAGE)

NOTE: Chart not to scale.