

RNAV (GPS) RWY 23

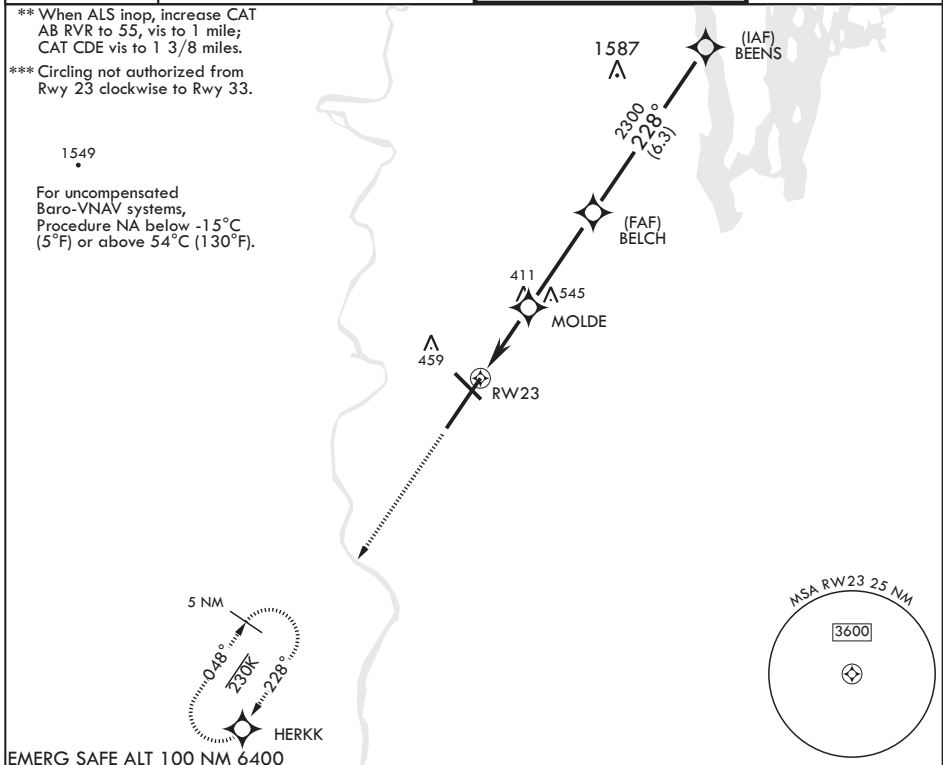
APCH CRS	Rwy Idg	11,597
228°	TDZE	241
	Arprt Elev	241

AL-447 (USAF)

WESTOVER ARB METROPOLITAN (KCEF)

RNP APCH.	ALSF-1	MISSED APPROACH: Climb to 1000, then climbing left turn to 3000 direct HERKK and hold.
DME/DME RNP-0.3 NA.		
* When ALS inop, increase vis to 1 3/8 miles.		

ATIS* 127.525	BRADLEY APP CON/DEP CON 125.35 281.5	TOWER* 134.85 (CTAF) 0 348.75	GND CON 118.35 275.8
------------------	---	----------------------------------	-------------------------



EMERG SAFE ALT 100 NM 6400

3000	HERKK	VGSi and RNAV glidepath not coincident (VGSi angle 3.00/TCH 64)				BEENS	ELEV 241	TDZE 241
		RWY 23				2700	Rwy 5 Idg 10,395'	228° to RWY 23
1.4 NM to RWY 23		MOLDE	BELCH	2300	228°	GP 3.00°	BCN TWR 400 379	7085 x 130
2.7 NM		3.6 NM		1020		TCH 46	11,597 x 1300	391
CATEGORY	A	B	C	D	E			
LNAV/VNAV DA*	760/55		519	(600-1)				
LNAV MDA**	760/24	519 (600-1/2)	760/55	519	(600-1)			
CIRCLING***	760-1 519 (600-1)	780-1 539 (600-1)	840-1 1/2 599 (600-1 1/2)	1060-2 3/4 819 (900-2 3/4)	1080-3 839 (900-3)	HIRL all Rwy's		

RNAV (GPS) RWY 23

NE-1, 03 OCT 2024 to 31 OCT 2024

NE-1, 03 OCT 2024 to 31 OCT 2024