

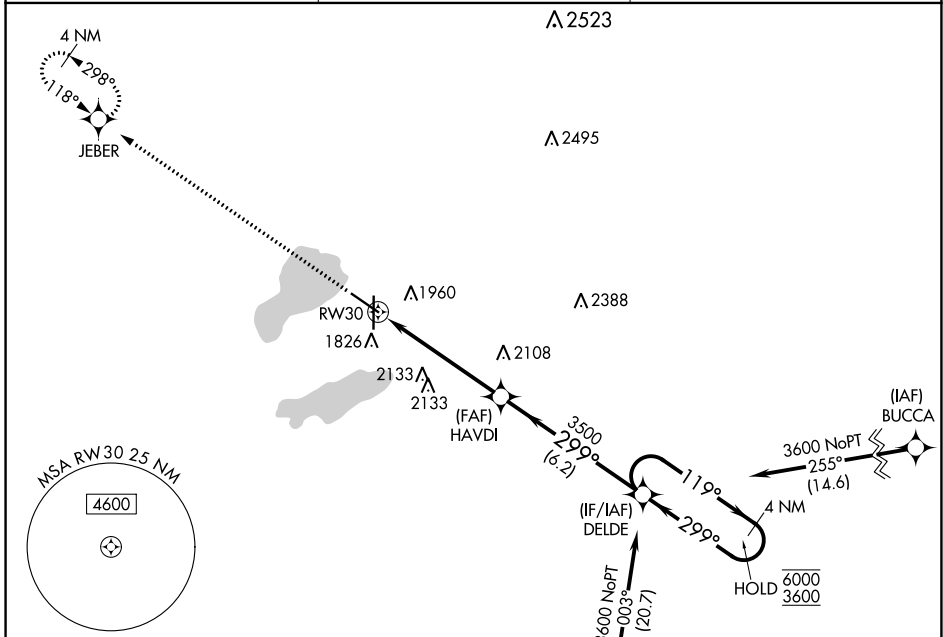
WAAS CH 50305 W30A	APP CRS 299°	Rwy Idg TDZE Apt Elev	6898 1735 1749
--	------------------------	-----------------------------	---

RNAV (GPS) RWY 30

WATERTOWN RGNL (ATY)

RNP APCH - GPS.	MISSED APPROACH: Climb to 3600 direct JEBER and hold.
<p>▼ For uncompensated Baro-VNAV systems, LNAV/VNAV NA below -18°C or above 54°C.</p> <p>▲</p>	

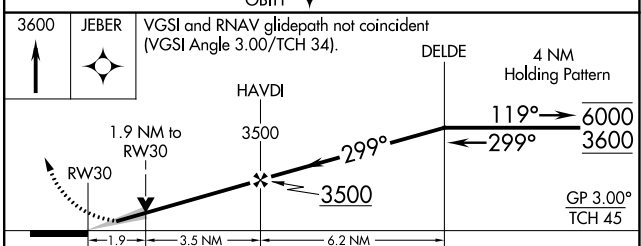
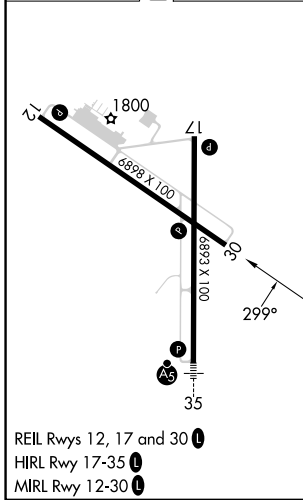
ASOS 126.625	MINNEAPOLIS CENTER 128.5 306.2	UNICOM 123.05 (CTAF) 0
------------------------	--	----------------------------------



NC-1, 08 AUG 2024 to 05 SEP 2024

NC-1, 08 AUG 2024 to 05 SEP 2024

ELEV 1749	D	TDZE 1735
-----------	----------	-----------



CATEGORY	A	B	C	D
LPV DA	1989- ³ / ₄		254 (300- ³ / ₄)	
LNAV/VNAV DA	2210-1 ³ / ₈		475 (500-1 ³ / ₈)	
LNAV MDA	2360-1 625 (700-1)		2360-1 ³ / ₄ 625 (700-1 ³ / ₄)	
C CIRCLING	2360-1 611 (700-1)		2500-2 ¹ / ₄ 751 (800-2 ¹ / ₄) 2500-2 ¹ / ₂ 751 (800-2 ¹ / ₂)	