

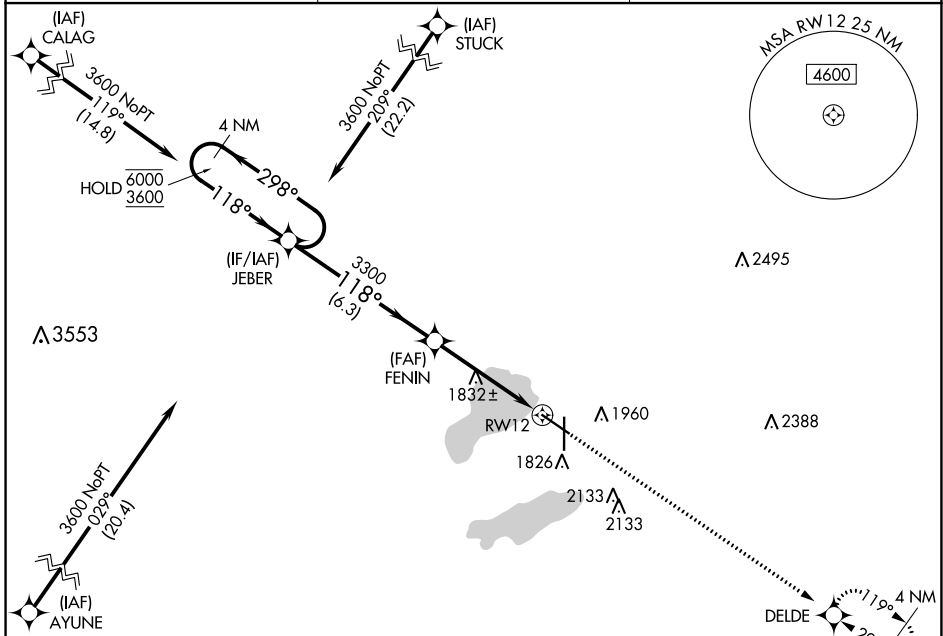
WAAS CH 53405 W12A	APP CRS 118°	Rwy Idg TDZE 1749 Apt Elev 1749	6898 1749 1749
--	------------------------	---	---

RNAV (GPS) RWY 12

WATERTOWN RGNL (ATY)

RNP APCH - GPS.	MISSED APPROACH: Climb to 3600 direct DELDE and hold.
<p>▼ Rwy 12 helicopter visibility reduction below 3/4 SM NA.</p> <p>▲ For uncompensated Baro-VNAV systems, LNAV/VNAV NA below -18°C or above 54°C.</p>	

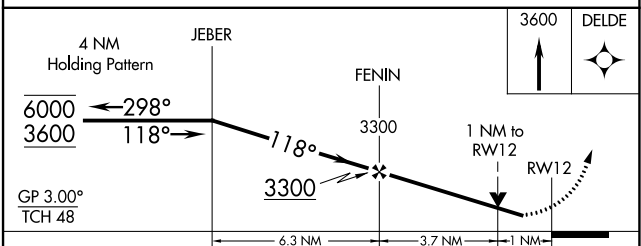
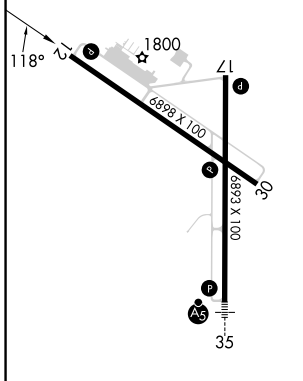
ASOS 126.625	MINNEAPOLIS CENTER 128.5 306.2	UNICOM 123.05 (CTAF) 0
------------------------	--	----------------------------------



NC-1, 31 OCT 2024 to 28 NOV 2024

NC-1, 31 OCT 2024 to 28 NOV 2024

ELEV 1749	D TDZE 1749
-----------	--------------------



CATEGORY	A	B	C	D
LPV DA		2021-7/8	272 (300-7/8)	
LNAV/VNAV DA		2076-1	327 (400-1)	
LNAV MDA		2100-1	351 (400-1)	
C CIRCLING	2260-1	511 (600-1)	2500-2 1/4 751 (800-2 1/4)	2500-2 1/2 751 (800-2 1/2)

REIL Rwy 12, 17 and 30 **0**
 HIRL Rwy 17-35 **0**
 MIRL Rwy 12-30 **0**