

LOC/DME I-ATY 111.9 Chan 56	APP CRS 354°	Rwy Idg 6893 TDZE 1745 Apt Elev 1749
---	------------------------	---

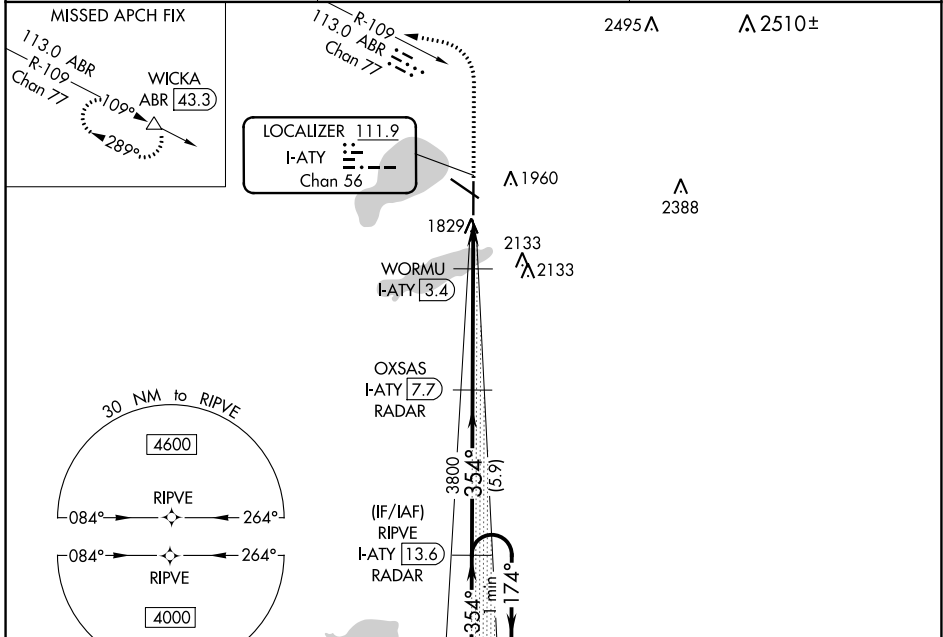
ILS or LOC RWY 35

WATERTOWN RGNL (ATY)

RNAV 1-GPS or RADAR required for procedure entry. DME required.

MALSRL
MISSED APPROACH: Climb to 3600 then climbing left turn to 4500 on heading 275° and ABR R-109 to WICKA/ABR 43.3 DME and hold.

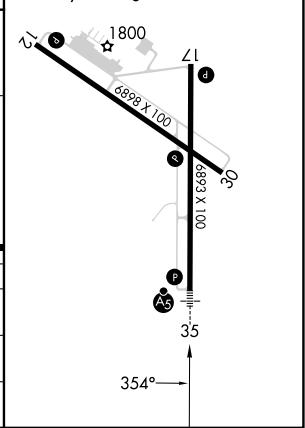
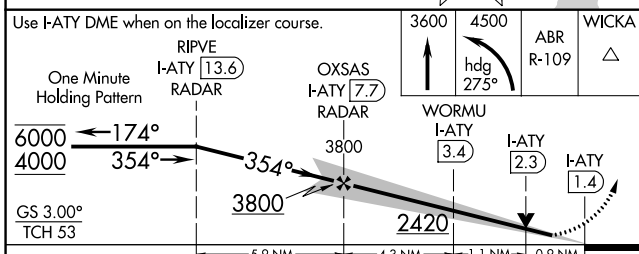
ASOS 126.625	MINNEAPOLIS CENTER 128.5 306.2	UNICOM 123.05 (CTAF) 0
------------------------	--	----------------------------------



Use I-ATY DME when on the localizer course.

3600	4500	ABR R-109	WICKA
↑	hdg 275°		

ELEV 1749	TDZE 1745
REIL Rwy 12, 17 and 30	
HIRL Rwy 17-35	
MIRL Rwy 12-30	



CATEGORY	A	B	C	D
S-ILS 35	1945-1/2		200 (200-1/2)	
S-LOC 35	2080-1/2		335 (400-1/2)	
CIRCLING	2260-1 511 (600-1)		2500-2 1/4 751 (800-2 1/4)	2500-2 1/2 751 (800-2 1/2)

NC-1, 31 OCT 2024 to 28 NOV 2024

NC-1, 31 OCT 2024 to 28 NOV 2024