

APP CRS	Rwy Idg	<b>6869</b>
<b>187°</b>	TDZE	<b>13</b>
	Apt Elev	<b>14</b>

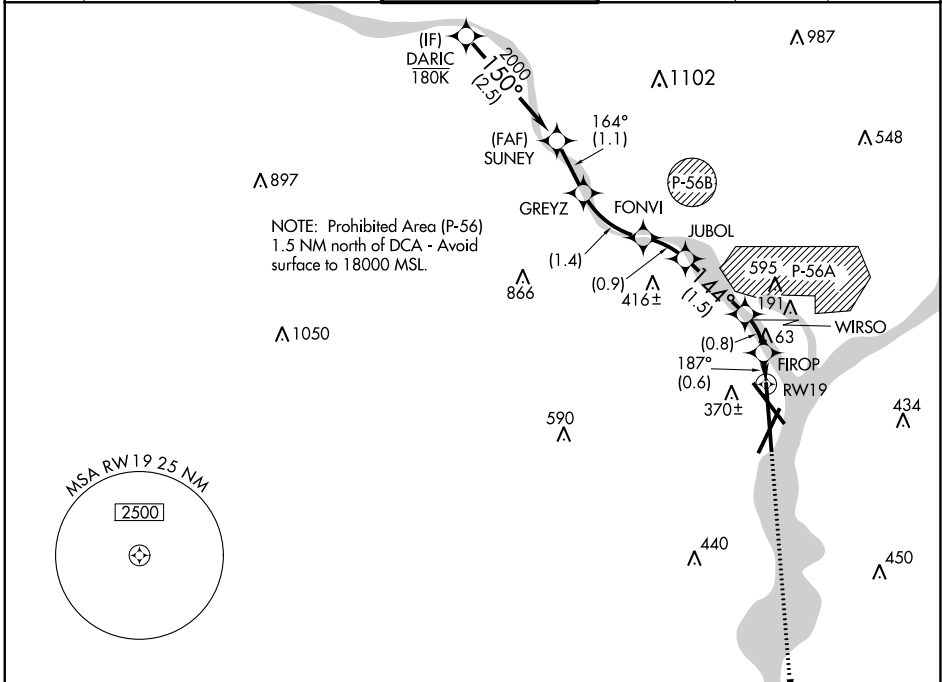
# RNAV (RNP) Z RWY 19

RONALD REAGAN WASHINGTON NTL (DCA)

RNP AR APCH - GPS. MALSF  MISSED APPROACH: Climb to 3000 on the final approach track to RW19 then direct BADDN and hold, continue climb-in-hold to 3000.

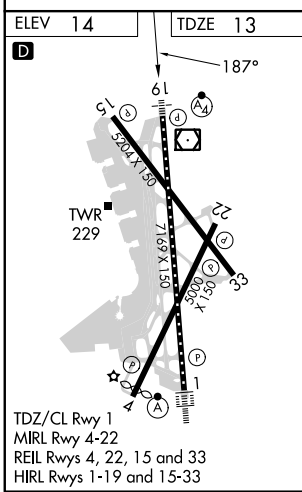
Inop table does not apply. For uncompensated Baro-VNAV systems, procedure NA below -8°C or above 54°C.

D-ATIS	POTOMAC APP CON	WASHINGTON TOWER	GND CON	CLNC DEL	CPDLC
<b>132.65</b>	<b>119.85 239.25</b> (WEST/SOUTH) <b>124.2 360.8</b> (EAST)	<b>119.1 257.6</b>	<b>121.7 257.6</b>	<b>128.25</b>	



NE-3, 05 SEP 2024 to 03 OCT 2024

NE-3, 05 SEP 2024 to 03 OCT 2024



DARIC	SUNEY	GREYZ	FONVI	JUBOL	WIRSO	FIROP	BADDN
2700	2000	1700	1226	954	492	241	
GP 3.00°	2000						
TCH 50							
	2.5 NM	1.1 NM	1.4 NM	0.9 NM	1.5 NM	0.8 NM	0.6 NM
CATEGORY	A	B	C	D			
RNP 0.11 DA		491/60	478 (500-1¼)				
RNP 0.30 DA		550-1½	537 (600-1½)				
<b>AUTHORIZATION REQUIRED</b>							