

LOC/DME I-VVWH 111.35 Chan 50(Y)	APP CRS 147°	Rwy Idg 6869 TDZE 13 Apt Elev 14
--	------------------------	---

LDA Z RWY 19

RONALD REAGAN WASHINGTON NTL (DCA)

DME required. RADAR required for procedure entry.

▼ Rwy 19 helicopter visibility reduction below 1 SM NA.
▲ Circling NA northeast of Rwy 15-33. Inop table does not apply.

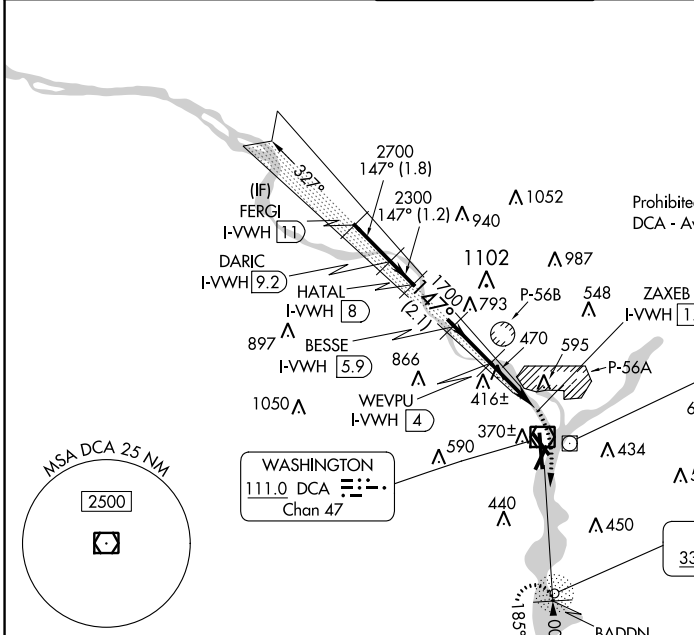
MALSF

MISSED APPROACH: Climbing right turn to 3000 on DCA VOR/DME R-185 to BADDN/DCA VOR/DME 5.9 DME and hold, continue climb-in-hold to 3000.

D-ATIS 132.65	POTOMAC APP CON 119.85 239.25 (WEST/SOUTH) 124.2 360.8 (EAST)	WASHINGTON TOWER 119.1 257.6	GND CON 121.7 257.6	CLNC DEL 128.25	CPDLC
-------------------------	---	--	-------------------------------	---------------------------	-------

ALTERNATE MISSED APCH FIX

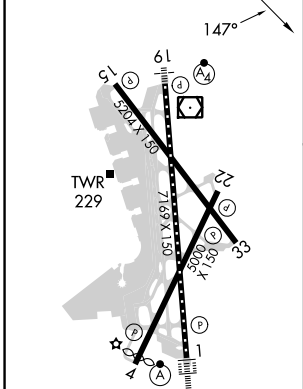
OXONN
VQK
332



NE-3, 05 SEP 2024 to 03 OCT 2024

NE-3, 05 SEP 2024 to 03 OCT 2024

ELEV 14	D	TDZE 13
---------	----------	---------



REIL Rws 4, 15, 22 and 33
TDZ/CL Rwy 1
HIRL Rws 1-19 and 15-33
MIRL Rwy 4-22

FERGI I-VVWH 111	DARIC I-VVWH 9.2	HATAL I-VVWH 8	3000	BADDN DCA 5.9
2700	2300	1700	1100	
1.8 NM		1.2 NM		0.9

CATEGORY	A	B	C	D
S-19	780/50 767 (800-1)	780/55 767 (800-1)	780-2½ 767 (800-2½)	
C CIRCLING	780-1 766 (800-1)	780-1¼ 766 (800-1¼)	840-2½ 826 (900-2½)	900-3 886 (900-3)