

FRDMM FIVE ARRIVAL (RNAV) Arrival Routes

WASHINGTON, DC

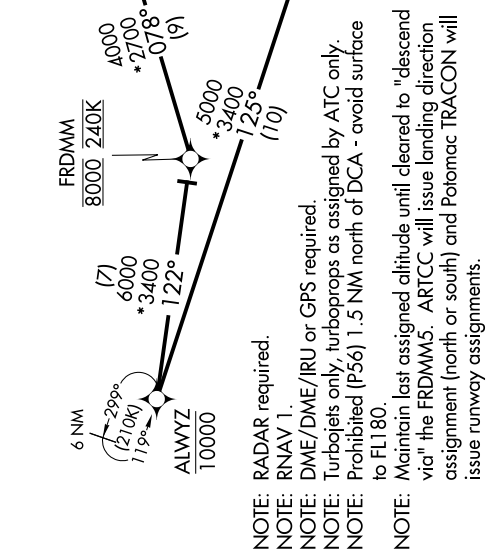
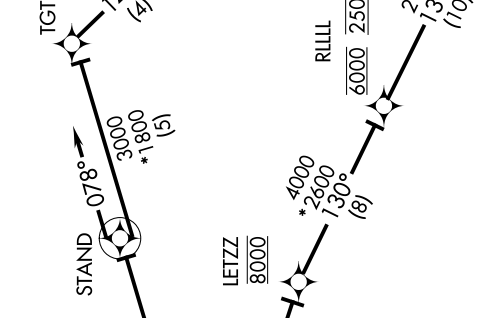
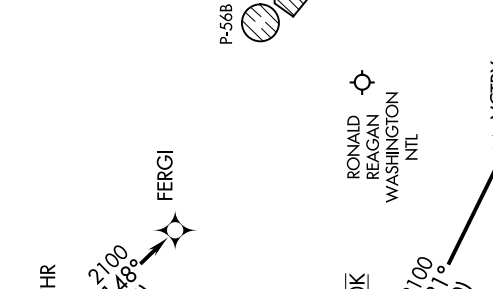
NE-3, 18 MAY 2023 to 15 JUN 2023

POTOMAC APP CON
118.675 323.175
DCA D-ATIS
132.65
KADW D-ATIS
133.675 251.05
*KDAAF AAF ATIS
128.175

P-568

P-56A

JOINT BASE
ANDREWS



ARRIVAL ROUTE DESCRIPTION

LANDING DCA RWYS 1, 4, 33, and ADW RWYS 1L/R and LANDING DAA: From ALWYZ on track 125° to cross LETZ at 8000, then on track 130° to cross RLLIL at 6000 and at 250K, then on track 131° to VCTRY, then on track 189° to HEROQ, then on track 189°. Expect radar vectors to final approach course.

LANDING DCA RWYS 15, 19, 22: From ALWYZ on track 122° to cross FRDMM at 8000 and 240K, then on track 078° to STAND, then on track 078° to TGTHR, then on track 148° to FERGI, expect LDA/DME RWY 19, RNAV (RNP) RWY 19, RIVER VISUAL RWY 19 or radar vectors to final approach course.

LANDING ADW RWYS 19L/R: From ALWYZ on track 122° to cross FRDMM at 8000 and at 240K, then on track 078° to STAND, then on track 078°. Expect radar vectors to final approach course.

FRDMM FIVE ARRIVAL (RNAV) Arrival Routes

WASHINGTON, DC

NOTE: Chart not to scale.

NE-3, 18 MAY 2023 to 15 JUN 2023