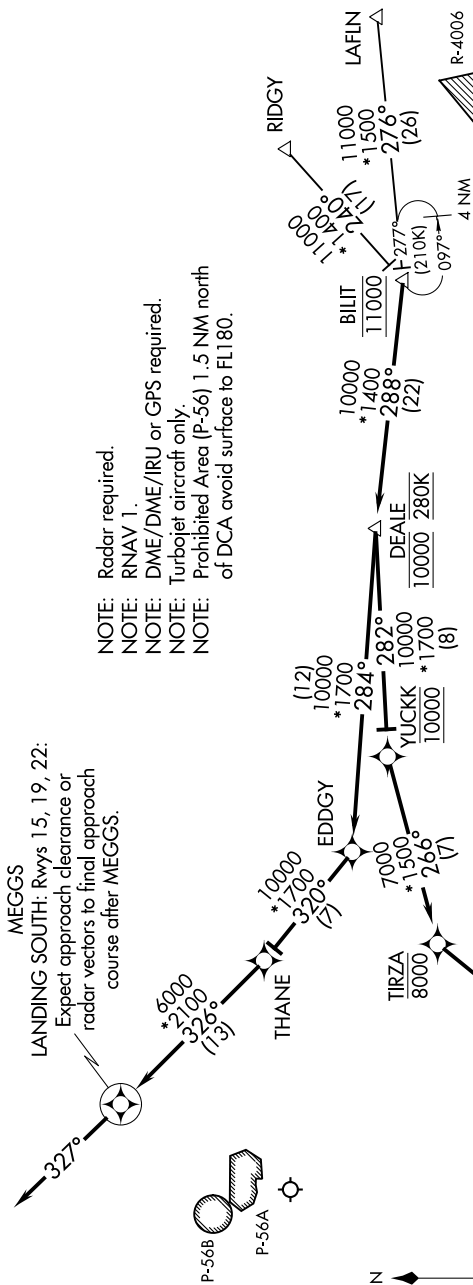


NE-3, 18 MAY 2023 to 15 JUN 2023

POTOMAC_APP CON
124.55 317.425
D-ATIS
132.65



NOTE: Radar required.
 NOTE: RNAV 1.
 NOTE: DME/DME/IRU or GPS required.
 NOTE: Turbojet aircraft only.
 NOTE: Prohibited Area (P-56) 1.5 NM north of DCA avoid surface to FL180.

ARRIVAL ROUTE DESCRIPTION

LAFIN TRANSITION (LAFIN.DEALE3):
 RIDGY TRANSITION (RIDGY.DEALE3):

From BILIT on track 288° to cross DEALE at 10000 and at 280K.

From MITEY on track 326° to MEGGS, then on heading 327°. Expect radar vectors to final approach course.
 From DEALE on track 282° to cross YUCKK at 10000, then on track 266° to cross TIRZA at or below 8000, then on track 230° to cross HITEK at 7000, then on track 187° to MITEY, then on heading 187°. Expect radar vectors to final approach course.
 From DEALE on track 284° to EDDGY, then on track 320° to THANE, then on track 326° to MEGGS, then on heading 327°. Expect radar vectors to final approach course.

MITEY
 LANDING NORTH:
 Rwy 1, 4, 33:
 Expect approach clearance or radar vectors to final approach course after MITEY.

NOTE: Chart not to scale.

NE-3, 18 MAY 2023 to 15 JUN 2023