

(CLTCH3.CLTCH) 21112

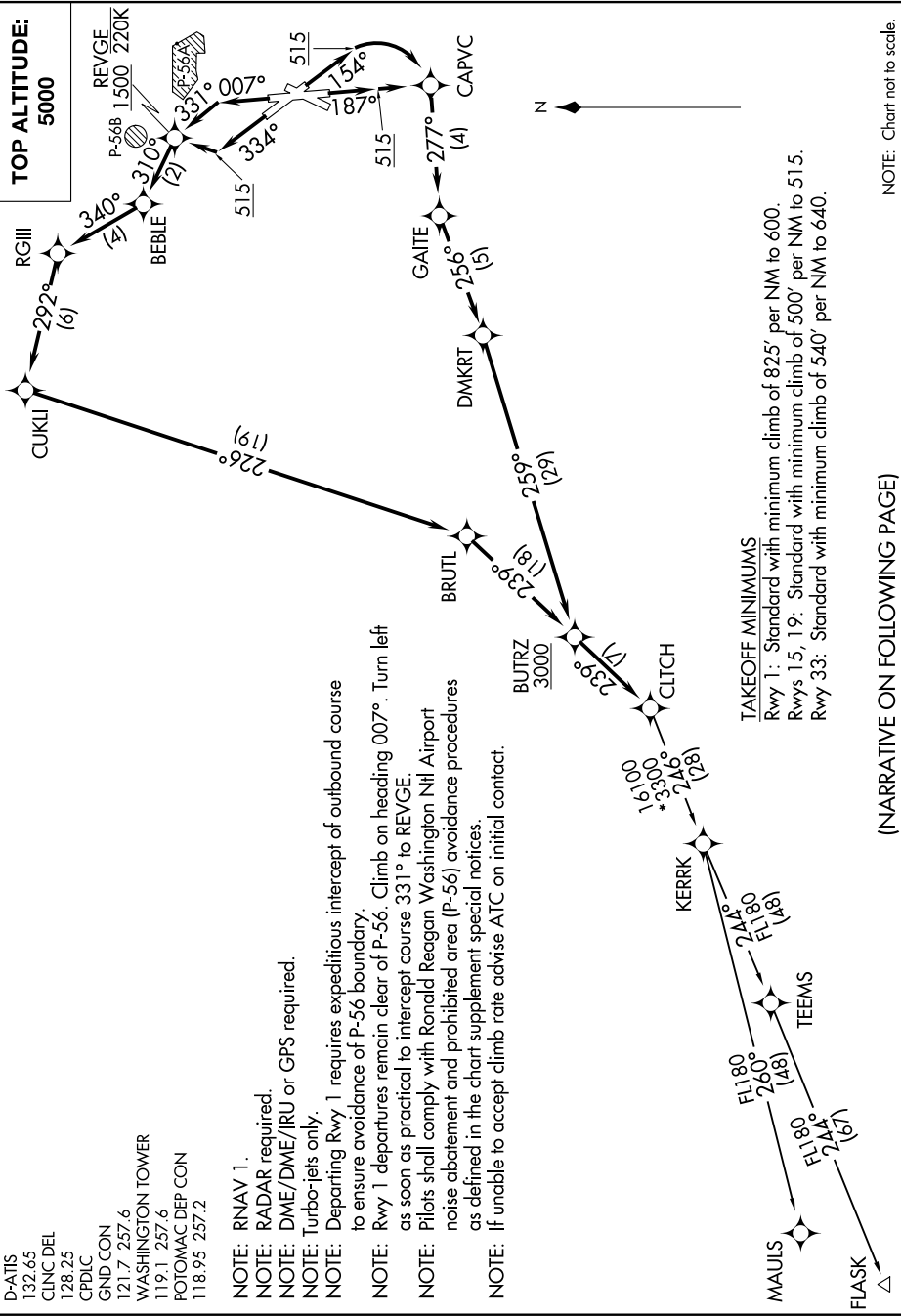
CLTCH THREE DEPARTURE (RNAV)

AL-443 (FAA)

RONALD REAGAN WASHINGTON NTL (DCA)

WASHINGTON, DC

TOP ALTITUDE:
5000



D-ATIS 132.65
 CINC DEL 128.25
 CPDLC 121.7
 GND CON 257.6
 WASHINGTON TOWER 119.1
 POTOMAC DEP CON 257.2
 118.95 257.2

NOTE: RNAV 1.
 NOTE: RADAR required.
 NOTE: DME/DME/IRU or GPS required.
 NOTE: Turbo-jets only.
 NOTE: Departing Rwy 1 requires expeditious intercept of outbound course to ensure avoidance of P-56 boundary.
 NOTE: Rwy 1 departures remain clear of P-56. Climb on heading 007°. Turn left as soon as practical to intercept course 331° to REVGE.
 NOTE: Pilots shall comply with Ronald Reagan Washington Ntl Airport noise abatement and prohibited area (P-56) avoidance procedures as defined in the chart supplement special notices.
 NOTE: If unable to accept climb rate advise ATC on initial contact.

TAKEOFF MINIMUMS
 Rwy 1: Standard with minimum climb of 825' per NM to 600.
 Rwys 15, 19: Standard with minimum climb of 500' per NM to 515.
 Rwy 33: Standard with minimum climb of 540' per NM to 640.

(NARRATIVE ON FOLLOWING PAGE)

NOTE: Chart not to scale.

CLTCH THREE DEPARTURE (RNAV)

(CLTCH3.CLTCH) 31DEC20

WASHINGTON, DC

RONALD REAGAN WASHINGTON NTL (DCA)