

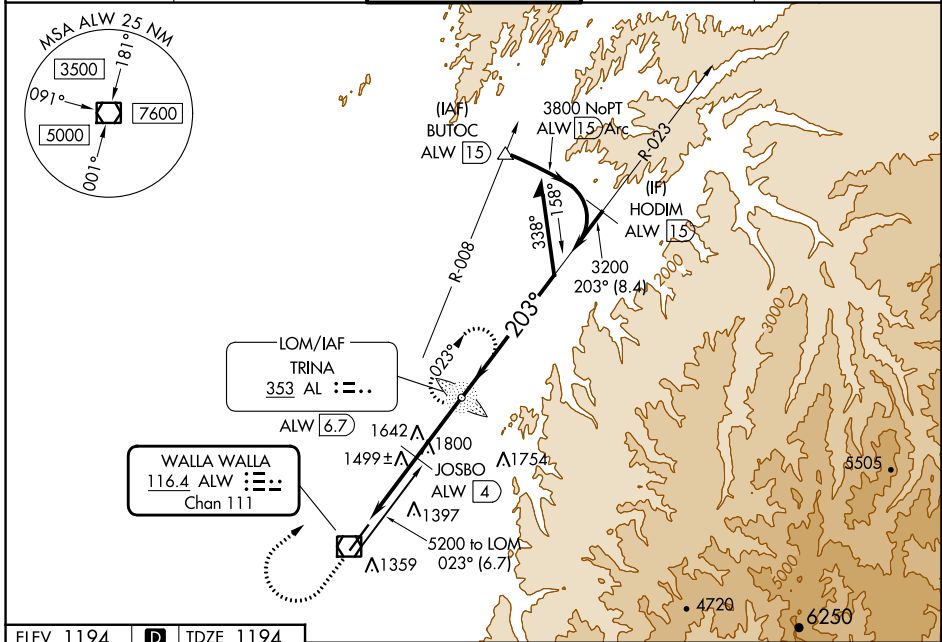
VOR/DME ALW <b>116.4</b> Chan <b>111</b>	APP CRS <b>203°</b>	Rwy Idg <b>6527</b> TDZE <b>1194</b> Apt Elev <b>1194</b>
--	------------------------	---

# VOR RWY 20

WALLA WALLA RGNL (ALW)

ADF required.	MALSR	MISSED APPROACH: Climb to 2300 then climbing right turn to 5100 direct TRINA LOM/ALW 6.7 DME and hold, continue climb-in-hold to 5100.
<p>▲ NA For inop ALS, increase JOSBO fix minimums S-20 Cats C/D visibility to 1½ SM.</p>		

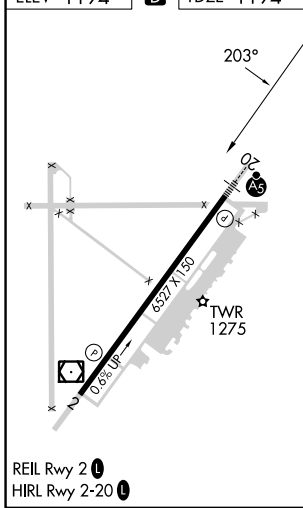
ASOS <b>135.875</b>	SPOKANE APP CON* <b>133.15 379.15</b>	WALLA WALLA TOWER* <b>118.5 (CTAF) 289.4</b>	GND CON <b>121.6 289.4</b>	UNICOM <b>122.95</b>
------------------------	--	---	-------------------------------	-------------------------



NW-1, 08 AUG 2024 to 05 SEP 2024

NW-1, 08 AUG 2024 to 05 SEP 2024

ELEV 1194	<b>D</b>	TDZE 1194
-----------	----------	-----------



2300	5100	AL	VGSI and descent angles not coincident (VGSI Angle 3.00/TCH 50).
↑	↷		TRINA AL LOM ALW [6.7]
ALW VOR/DME	ALW [2.6]	JOSBO ALW [4]	Remain within 10 NM
↷	↷	↷	023°
↷	↷	↷	203°
↷	↷	↷	4900
↷	↷	↷	3200
↷	↷	↷	*2260 when using Pendleton altimeter setting.
↷	↷	↷	2140*
↷	↷	↷	1.6 NM 1.4 NM 2.7 NM

CATEGORY	A	B	C	D
S-20	2140/40	946 (1000-¾)	2140-2	946 (1000-2)
<b>C</b> CIRCLING	2140-1¼	946 (1000-½)	2140-2¾	2300-3
			946 (1000-2¾)	1106 (1200-3)
JOSBO FIX MINIMUMS (DME REQUIRED)				
S-20	1760/24	566 (600-½)	1760-1¼	566 (600-1¼)
<b>C</b> CIRCLING	1760-1	1820-1	2120-2¾	2300-3
	566 (600-1)	626 (700-1)	926 (1000-2¾)	1106 (1200-3)