

ILS or LOC Z RWY 30

LOC/DME I-VPS 109.1 Chan 28	APCH CRS 303°	Rwy Idg 12,004 TDZE 68 Arprt Elev 84
---	-------------------------	---

[USAF] EGLIN AFB DESTIN FORT WALTON BEACH(KVPS)

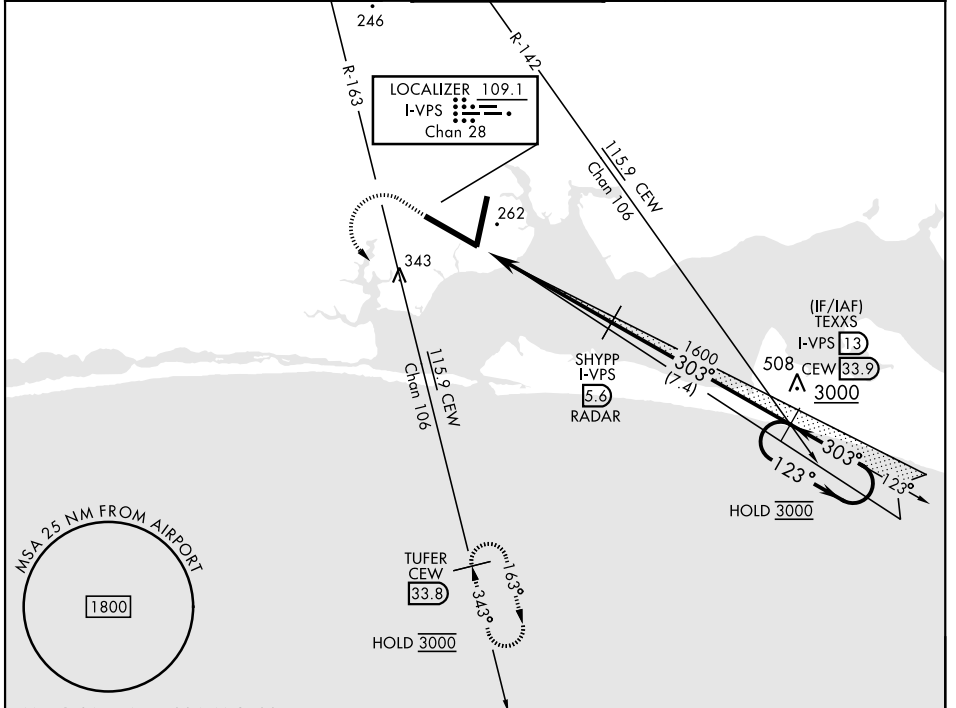
DME required

*When ALS inop, increase RVR to 40, vis to ¾ mile.
 **When ALS inop increase CAT AB RVR to 55, vis to 1 mile;
 CAT CDE RVR to 50, vis to 1 mile.

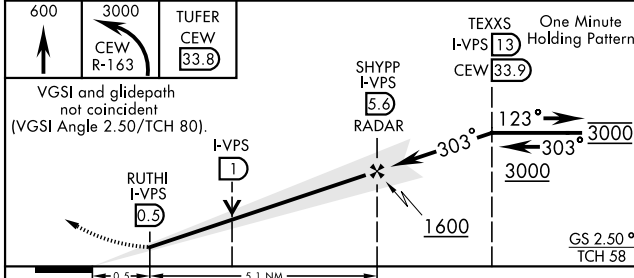
ALSF-1

MISSED APPROACH: Climb to 600, then climbing left turn to 3000 on CEW VORTAC R-163 to TUFER/33.8 DME and hold.

ATIS ★ 134.625 273.5	APP CON 125.1 281.45 271° 089° 132.1 360.6 090°-270°	TOWER 118.2 353.65	GND CON 121.8 335.8	CLNC DEL 127.7 377.2
--------------------------------	--	------------------------------	-------------------------------	--------------------------------

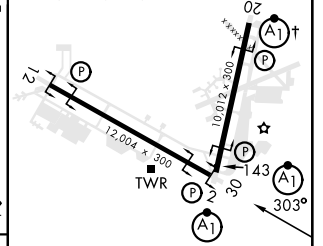


EMERG SAFE ALT 100 NM 3500



ELEV 84	TDZE 68
----------------	----------------

†Rwy 20 apch lgt 1500' nonstandard.



CATEGORY	A	B	C	D	E
S-ILS 30 *	268/24		200	(200-½)	
S-LOC 30 **	400/24	332 (400-½)	400/26	332	(400-½)
CIRCLING	600-1	516 (600-1)	680-1½ 596 (600-1½)	680-2 596 (600-2)	700-2¼ 616 (700-2¼)

HIRL all rwys

FAF to MAP 5.1 NM

Knots	60	90	120	150	180
Min:Sec	5:06	3:24	2:33	2:02	1:42

ILS or LOC Z RWY 30

SE-3, 31 OCT 2024 to 28 NOV 2024

SE-3, 31 OCT 2024 to 28 NOV 2024