

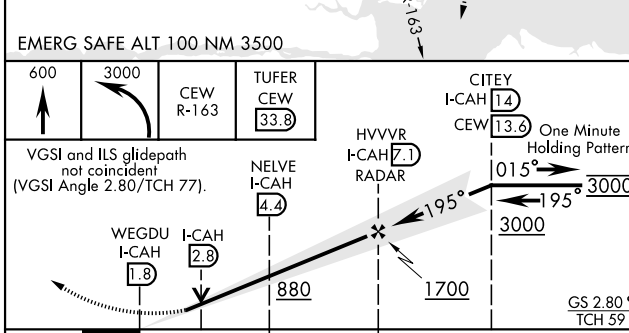
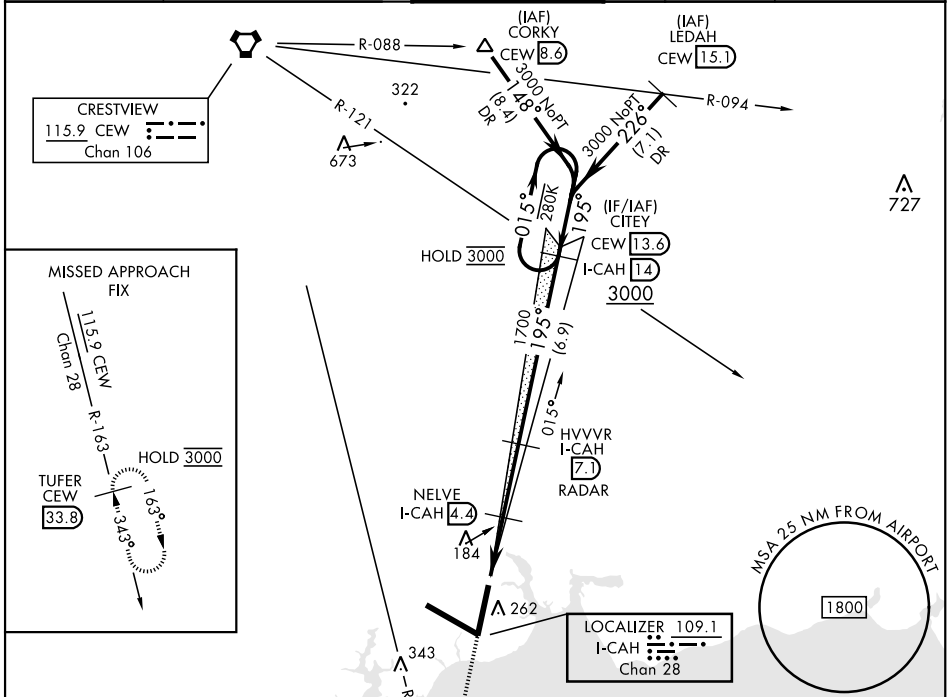
VALPARAISO DESTIN FT WALTON BEACH, FLORIDA

ILS or LOC Z RWY 20

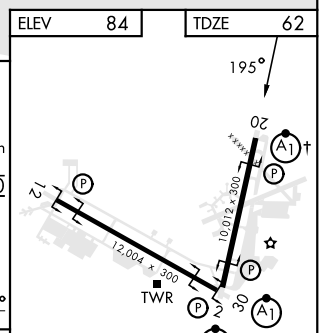
LOC/DME I-CAH 109.1 Chan 28	APCH CRS 195°	Rwy Idg 10,012 TDZE 62 Arprt Elev 84
---	-------------------------	---

[USAF] EGLIN AFB DESTIN FORT WALTON BEACH (KVPS)

DME required		ALSF-1 	MISSED APPROACH: Climb to 600, then climbing left turn to 3000 on CEW VORTAC R-163 to TUFER/33.8 DME and hold.	
* When ALS inop increase RVR to 40, vis to 3/4 mile. ** When ALS inop increase RVR to 55, vis to 1 mile.				
ATIS ★ 134.625 273.5	APP CON 125.1 281.45 271°-089° 132.1 360.6 090°-270°	TOWER 118.2 353.65	GND CON 121.8 335.8	CLNC DEL 127.7 377.2



EMERG SAFE ALT 100 NM 3500	600	3000	CEW R-163	TUFER CEW 33.8	CITEY I-CAH 14	HVVVR I-CAH 7.1	One Minute Holding Pattern
VGSI and ILS glidepath not coincident (VGSI Angle 2.80/TCH 77).							
WEGDU I-CAH 1.8		NELVE I-CAH 4.4		RADAR		GS 2.80° TCH 59	
A		B		C		D	
-2.6 NM		-2.7 NM					
CATEGORY	262/24		200		(200-1/2)		
S-ILS 20 *	262/24		200		(200-1/2)		
S-LOC 20 **	440/24	378 (400-1/2)	440/35		378 (400-3/4)		
☐ CIRCLING	600-1	516 (600-1)	680-1 1/2	680-2	700-2 1/4	596 (600-1 1/2) 596 (600-2) 616 (700-2 1/4)	



ELEV	84	TDZE	62
† Rwy 20 apch lgt 1500' nonstandard.			
HIRL all rwys			
FAF to MAP 5.3 NM			
Knots	60	90	120 150 180
Min:Sec	5:18	3:32	2:39 2:07 1:46

VALPARAISO DESTIN FT WALTON BEACH, FLORIDA
Orig 16MAY24

EGLIN AFB DESTIN FORT WALTON BEACH (KVPS)
30°29'N-86°32'W

ILS or LOC Z RWY 20

SE-3, 31 OCT 2024 to 28 NOV 2024

SE-3, 31 OCT 2024 to 28 NOV 2024