

LOC/DME I-CAH 109.1 Chan 28	APCH CRS 195°	Rwy Idg 10,012 TDZE 62 Arprt Elev 84
---	-------------------------	---

[USAF]

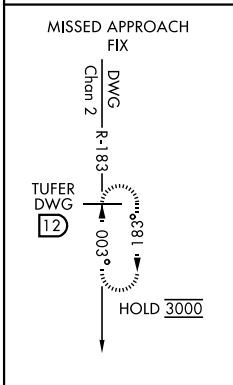
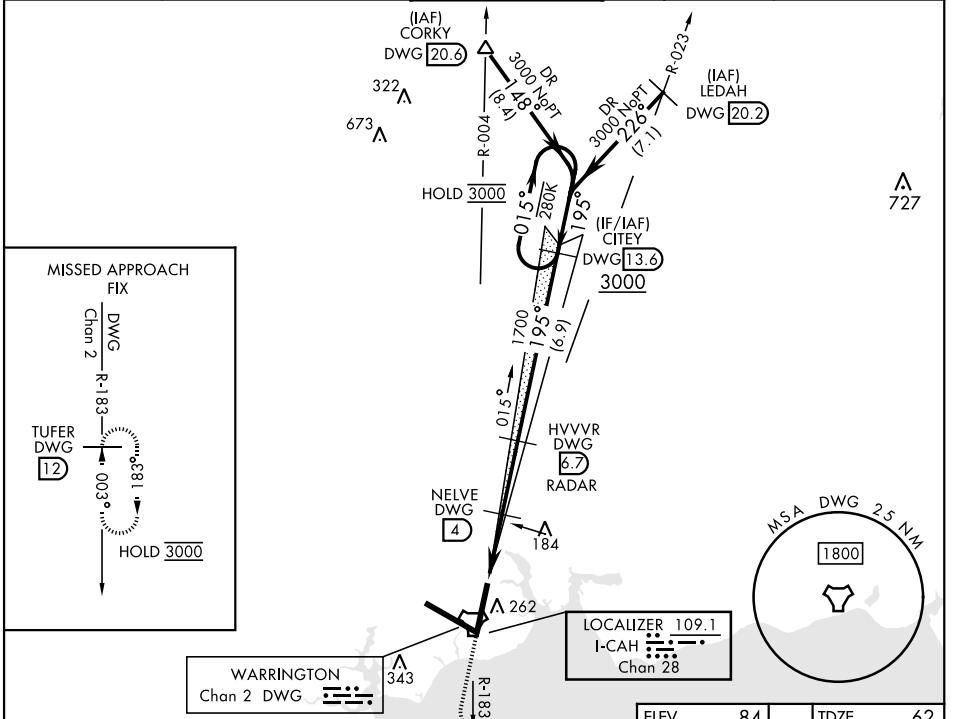
DME required



MISSED APPROACH: Climb to 600, then climbing left turn to 3000 on DWG TACAN R-183 to TUFER/12 DME and hold.

* When ALS inop increase RVR to 40, vis to 3/4 mile.
** When ALS inop increase RVR to 55, vis to 1 mile.

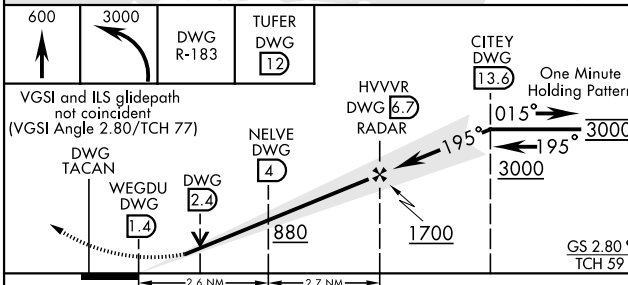
ATIS * 134.625 273.5	APP CON 125.1 281.45 271° - 089° 132.1 360.6 090° - 270°	TOWER 118.2 353.65	GND CON 121.8 335.8	CLNC DEL 127.7 377.2
--------------------------------	--	------------------------------	-------------------------------	--------------------------------



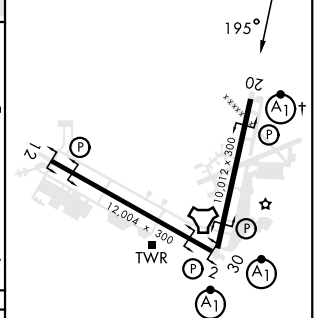
SE-3, 03 OCT 2024 to 31 OCT 2024

SE-3, 03 OCT 2024 to 31 OCT 2024

EMERG SAFE ALT 100 NM 3500



ELEV 84	TDZE 62
---------	---------



CATEGORY	A	B	C	D	E
S-ILS 20 *	262/24		200	(200-1/2)	
S-LOC 20 **	440/24	378 (400-1/2)	440/35	378 (400-3/4)	
CIRCLING	600-1	516 (600-1)	680-1 1/2	680-2	700-2 1/4
			596 (600-1 1/2)	596 (600-2)	616 (700-2 1/4)

† Rwy 20 apch lgt 1500' nonstandard.
HIRL all rwys

FAF to MAP 5.3 NM					
Knots	60	90	120	150	180
Min:Sec	5:18	3:32	2:39	2:07	1:46