

VALDOSTA, GEORGIA

RNAV (GPS) RWY 18R

APCH CRS 183°	Rwy Idg TDZE Arprt Elev	8002 231 233
-------------------------	-------------------------------	---

(USAF)

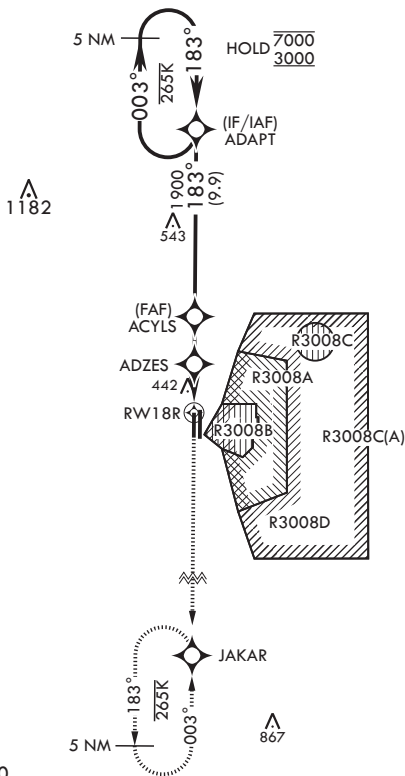
MOODY AFB (KVAD)

RNP APCH-GPS	MALSR	MISSED APPROACH: Climb to 3000 direct JAKAR and hold.
--------------	-------	---

▼ * When ALS inop, increase CAT AB RVR to 55, vis to 1 mile; CAT CDE vis to 1 3/8 miles.

ATIS★ 273.5	VALDOSTA APP CON 126.6 285.6	TOWER★ 128.45 (CTAF) 257.625	GND CON 138.95 275.8	CLNC DEL 120.625 296.7
-----------------------	--	---	--------------------------------	----------------------------------

Rwy 18R helicopter visibility reduction below RVR 4000 not authorized.



EMERG SAFE ALT 100 NM 3300

3000 JAKAR	ELEV 233	TDZE 231			
CATEGORY	A	B	C	D	E
LNAV MDA*	700/40	469 (500-¾)	700/50	469	(500-1)
CIRCLING	760-1	527 (600-1)	760-1½ 527 (600-1½)	800-2	567 (600-2)

VALDOSTA, GEORGIA

30°58'N - 83°12'W

MOODY AFB (KVAD)

Amdt 1 25JAN24

RNAV (GPS) RWY 18R

SE-4, 31 OCT 2024 to 28 NOV 2024

SE-4, 31 OCT 2024 to 28 NOV 2024