

VALDOSTA, GEORGIA

RNAV (GPS) RWY 18L

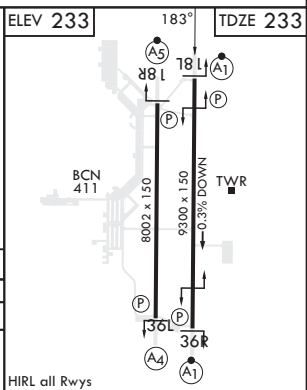
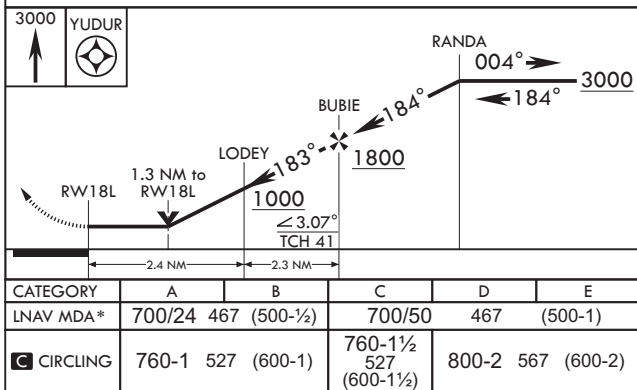
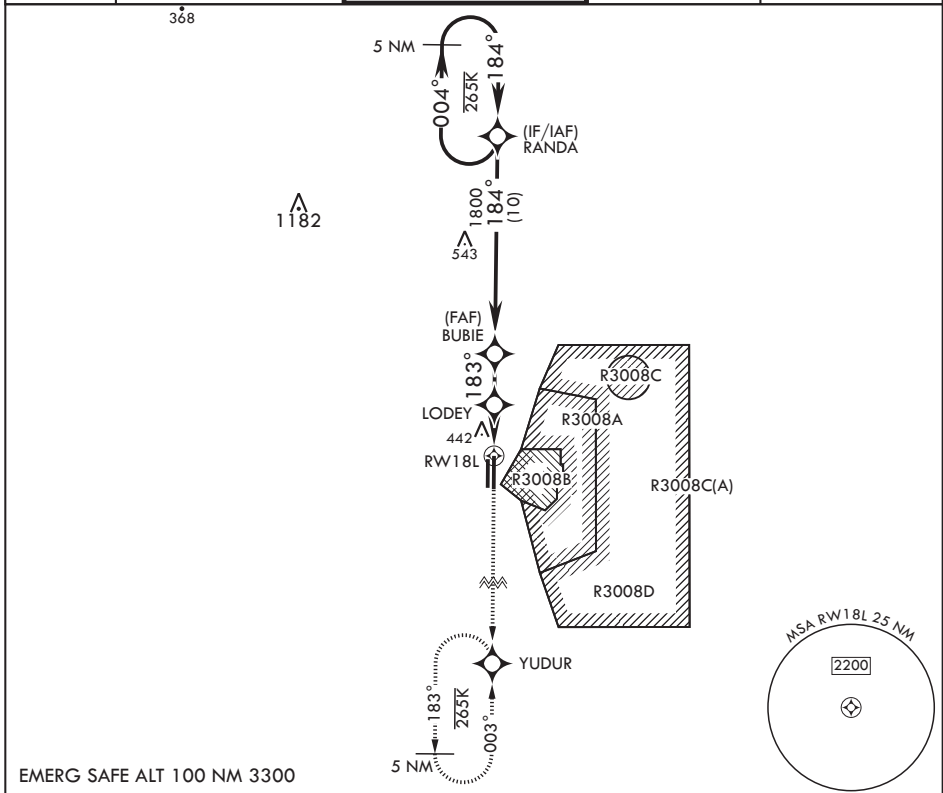
APCH CRS 183°	Rwy Idg 9300
	TDZE 233
	Arprt Elev 233

- (USAF)

MOODY AFB (KVAD)

RNP APCH-GPS	ALSF-1 	MISSED APPROACH: Climb to 3000 direct YUDUR and hold.
<p>▼ * When ALS inop, increase CAT AB RVR to 55 and vis to 1 mile, CAT CDE vis to 1 3/8 miles.</p>		

ATIS★ 273.5	VALDOSTA APP CON 126.6 285.6	TOWER★ 128.45 (CTAF) 257.625	GND CON 138.95 275.8	CLNC DEL 120.625 296.7
-----------------------	--	--	--------------------------------	----------------------------------



CATEGORY	A	B	C	D	E
LNVA MDA*	700/24	467 (500-½)	700/50	467	(500-1)
C CIRCLING	760-1	527 (600-1)	760-1½ 527 (600-1½)	800-2	567 (600-2)

VALDOSTA, GEORGIA
Amdt 2 25JAN24

30°58'N - 83°12'W

MOODY AFB (KVAD)

RNAV (GPS) RWY 18L

SE-4, 03 OCT 2024 to 31 OCT 2024

SE-4, 03 OCT 2024 to 31 OCT 2024