

ILS or LOC Y RWY 36R

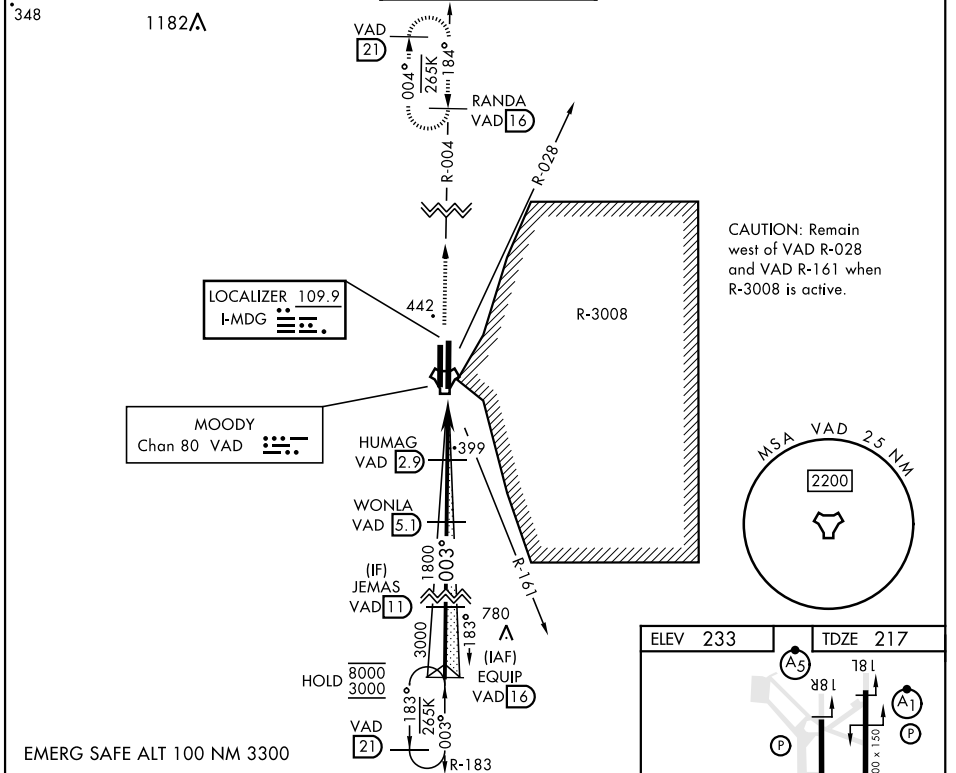
LOC I-MDG 109.9	APCH CRS 003°	Rwy Idg 9300
		TDZE 217
		Arprt Elev 233

[USAF]

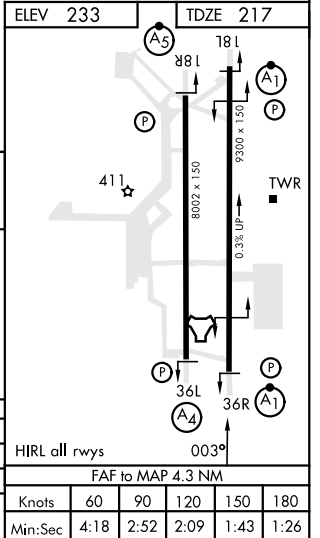
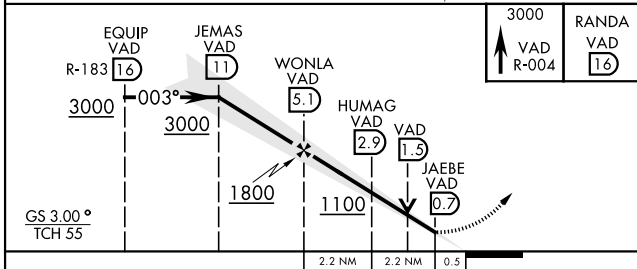
MOODY AFB (KVAD)

RADAR or DME required		ALSIF-1 (A1)	MISSED APPROACH: Climb to 3000 on VAD TACAN R-004 to RANDA and hold.
* When ALS inop, increase RVR to 40 and vis to 3/4 mile. ** When ALS inop, increase RVR CAT AB to 55 and vis to 1 mile, RVR CAT CDE vis to 1 3/8 miles.			

ATIS ★ 273.5	VALDOSTA APP CON 126.6 285.6	TOWER ★ 128.45 (CTAF) 257.625	GND CON 138.95 275.8	CLNC DEL 120.625 296.7
------------------------	--	---	--------------------------------	----------------------------------



CAUTION: Remain west of VAD R-028 and VAD R-161 when R-3008 is active.



ILS or LOC Y RWY 36R

SE-4, 31 OCT 2024 to 28 NOV 2024

SE-4, 31 OCT 2024 to 28 NOV 2024