

HI-ILS or LOC Z RWY 36R

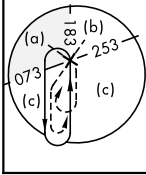
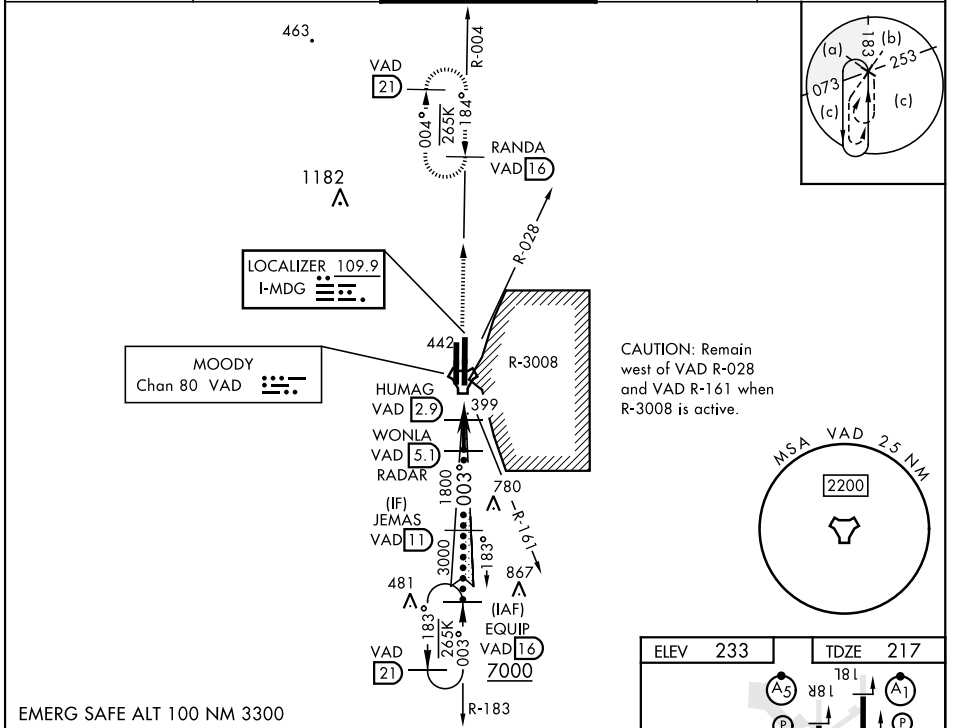
LOC I-MDG 109.9	APCH CRS 003°	Rwy Idg 9300	TDZE 217
		Arprt Elev 233	

[USAF]

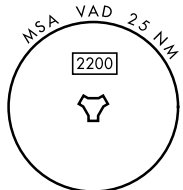
MOODY AFB (KVAD)

RADAR or DME required		ALSIF-1 (A1)	MISSED APPROACH: Climb to 3000 on VAD TACAN R-004 to RANDA and hold.
-----------------------	--	------------------------	--

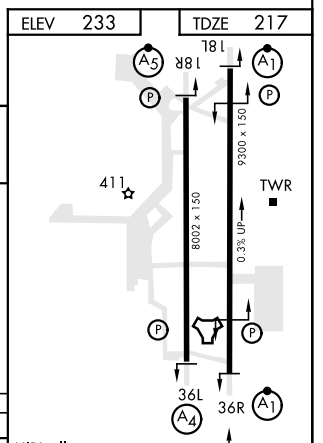
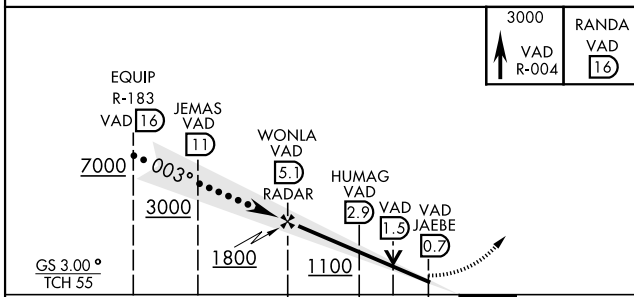
ATIS ★ 273.5	VALDOSTA APP CON 126.6 285.6	TOWER ★ 128.45 (CTAF) 257.625	GND CON 138.95 275.8	CLNC DEL 120.625 296.7
------------------------	--	--	--------------------------------	----------------------------------



CAUTION: Remain west of VAD R-028 and VAD R-161 when R-3008 is active.



EMERG SAFE ALT 100 NM 3300



CATEGORY	C	D	E
S-ILS 36R *	417/24	200	(200-1/2)
S-LOC 36R **	660/45	443	(500-1/2)
CIRCLING	760-1 1/2	800-2	
	527 (600-1 1/2)	567 (600-2)	

HIRL all rws	FAF to MAP 4.3 NM				
Knots	120	140	160	180	200
Min:Sec	2:09	1:51	1:37	1:26	1:17

HI-ILS or LOC Z RWY 36R

SE-4, 03 OCT 2024 to 31 OCT 2024

SE-4, 03 OCT 2024 to 31 OCT 2024