

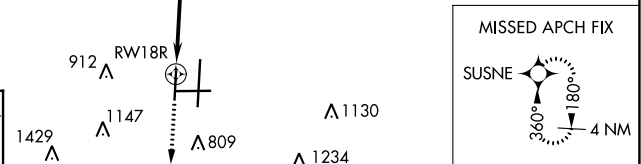
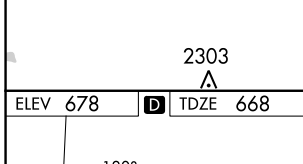
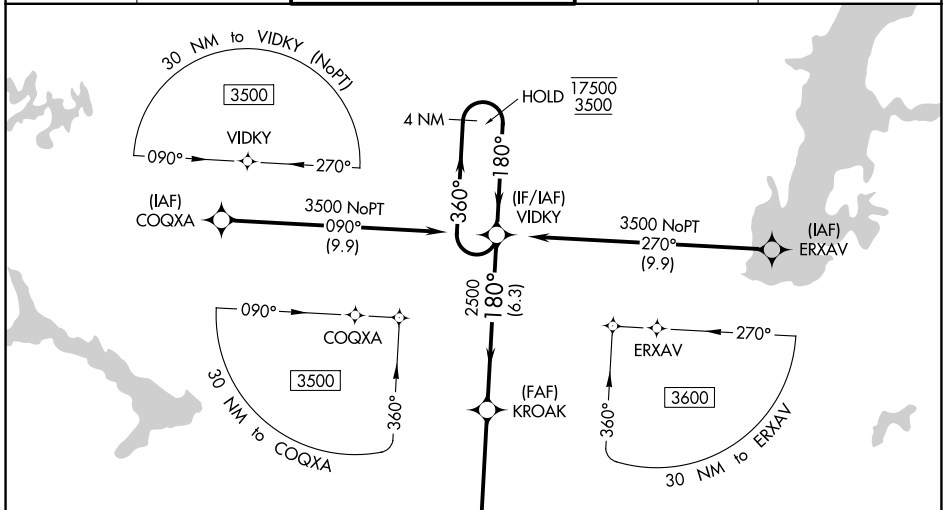
WAAS CH 69614 W18B	APP CRS 180°	Rwy Idg 5101 TDZE 668 Apt Elev 678
--	------------------------	---

RNAV (GPS) RWY 18R

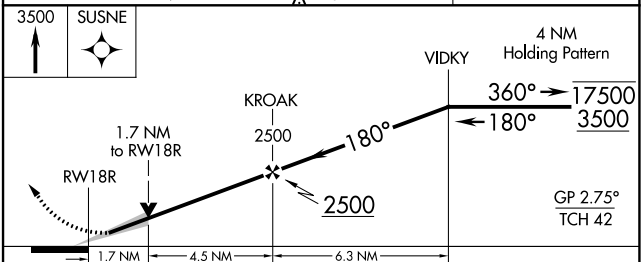
TULSA INTL (TUL)

RNP APCH - GPS.		<p>▽ Circling NA for Cat E south of Rwy 8-26. Use of FD or AP required during simultaneous operations. For uncompleted Baro-VNAV systems, LNAV/VNAV NA below -8°C or above 54°C. ▲ Simultaneous approach authorized. LNAV procedure NA during simultaneous operations.</p>			<p>MISSED APPROACH: Climb to 3500 direct SUSNE and hold.</p>	
-----------------	--	--	--	--	---	--

D-ATIS 124.9 377.2	TULSA APP CON 124.0 338.3	TULSA TOWER 121.2 310.8 (Rwys 18L-36R, 8-26) 118.7 257.8 (Rwy 18R-36L)		GND CON 121.9 348.6	CLNC DEL 134.05 284.7
------------------------------	-------------------------------------	--	--	-------------------------------	---------------------------------



ELEV 678	D	TDZE 668
TDZ/CL Rwy 36R HIRL Rwys 8-26, 18L-36R and 18R-36L REIL Rwys 8, 18R and 36L		



CATEGORY	A	B	C	D	E
LPV DA	868- ³ / ₄		200 (200- ³ / ₄)		
LNAV/VNAV DA	954- ⁷ / ₈		286 (300- ⁷ / ₈)		
LNAV MDA	1180-1	512 (600-1)	1180- ¹ / ₃	512 (600-1 ³ / ₃)	
☑ CIRCLING	1180-1	502 (600-1)	1500-2 ¹ / ₂	1520-2 ³ / ₄	1520-3
			822 (900-2 ¹ / ₂)	842 (900-2 ³ / ₄)	842 (900-3)

SC-1, 08 AUG 2024 to 05 SEP 2024

SC-1, 08 AUG 2024 to 05 SEP 2024